

LEA Name : Conemaugh Township Area SD
Address : 300 West Campus Avenue
Davidsville, PA 15928

County : Somerset
AUN Number : 108561803
LEA Type : SD

Annual Financial Report Accuracy Certification Statement

For Fiscal Year Ending
6/30/2023

Pennsylvania Department of Education
&
Office of Comptroller Operations

PDE-2056: Intermediate Unit
PDE-2057: School District, AVTS/CTC, Charter School,
and Special Program Jointure

CERTIFICATION: By signing this page I agree that the electronic data submitted is a complete and accurate statement of the financial operations and status of the local education agency for the fiscal year. It has been prepared in accordance with generally accepted accounting principles and established Commonwealth of PA reporting guidelines.

Chief School Administrator Signature

Board Secretary Signature

Date

Date

Brandon Studer

(814)241-7831

Ext :

Contact Person

Contact Person Telephone Number

brandon.studer@ctasd.org

(814)479-2620

Contact Person E-mail Address

Contact Person Fax Number

Audit Certification
Annual Financial Report:
For Fiscal Year Ending **6/30/2023**
(Pursuant to PA School Code Section 218(b))

LEA Name : Conemaugh Township Area SD
AUN Number : 108561803
County : Somerset

Audit Certification Due: 12/31/2023

This certification is applicable to the Annual Financial Report data submitted through the Consolidated Financial Reporting System (CFRS).

CERTIFICATION: By signing this page I agree that the financial statements of the school have been properly audited as noted above pursuant to Article XXIV, and in the auditor's professional opinion, the Annual Financial Report (PDE-2057) submitted through CFRS is materially consistent with the audited financial statements.

Chief School Administrator

Board Secretary

Signature

Date

Signature

Date

Brandon Studer

Contact Person

brandon.studer@ctasd.org

Contact Person E-mail Address

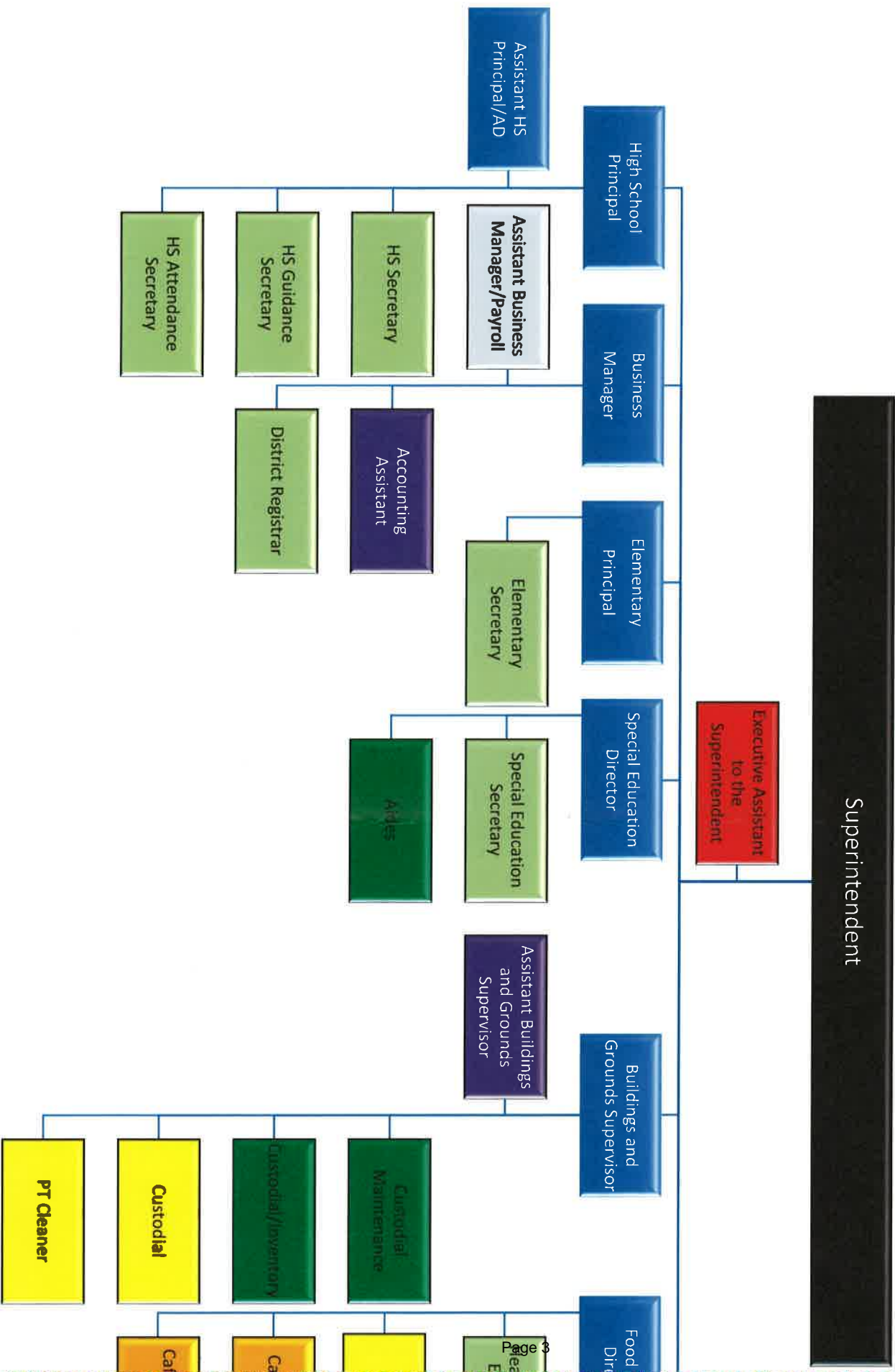
(814)241-7831 Ext :

Contact Person Telephone Number

(814)479-2620

Contact Person Fax Number

CTASD Organizational Chart





Book	Policy Manual
Section	600 Finances
Title	GASB Statement 34
Code	622
Status	Active
Adopted	July 18, 2000
Last Revised	July 17, 2001

Purpose

The Board recognizes the need to implement the required accounting and financial reporting standards stipulated by the Pennsylvania Department of Education.

The primary objectives of implementing the GASB Statement 34 are to assure compliance with state requirements, and properly account for both the financial and economic resources of the district.

Authority

Participation of the school district in any such activity shall be in accordance with Board policy.

Delegation of Responsibility

The responsibility to coordinate the compilation and preparation of all information necessary to implement this policy is delegated to the Business Manager.

The designated individual shall be responsible for implementing of the necessary procedures to establish and maintain a fixed asset inventory, including depreciation schedules. Depreciation shall be computed on a straight-line basis over the useful lives of the assets, using an averaging convention. Normal maintenance and repairs shall be charged to expense as incurred; major renewals and betterments that materially extend the life or increase the value of the asset shall be capitalized. A schedule of accumulated depreciation shall be consistent from year to year. The basis for depreciation, including groups of assets and useful lives, shall be in writing and submitted for review to the independent auditors.

The Business Manager shall prepare the required Management Discussion and Analysis (MD&A). The MD&A shall be in the form required by GASB Statement 34 and shall be submitted to the Board for approval, prior to publication.

Prior to submission of the MD&A for Board approval, the district's independent auditors shall review the MD&A, in accordance with SAS No. 52, "Required Supplementary Information."

Guidelines

In order to associate debt with acquired assets, and to avoid net asset deficits, any asset that has been acquired with debt proceeds shall be capitalized, regardless of the cost of the asset. The asset life of these assets shall be considered relative to the time of the respective debt amortizations.

For all other assets not acquired by debt proceeds, the dollar value of any single item for inclusion in the fixed assets accounts shall be not less than \$1,500.

The capitalization threshold shall be set at a level that will capture at least 80% of all fixed assets.

The assets listed below do not normally individually meet capitalization threshold criteria:

1. Library books.
2. Classroom texts.
3. Computer equipment.
4. Classroom furniture.

These asset category costs shall be capitalized and depreciated as groups when that group's acquisition cost exceeds the capitalization threshold in any given fiscal year.

For group asset depreciation purposes, the estimated useful life of the group may be based on the weighted average or simple average of the useful life of individual items, or on an assessment of the life of the group as a whole. Periodically, the district shall review the estimated life of groups of assets and adjust the remaining depreciation life of the group.

Assets that fall below the capitalization threshold for GASB 34 reporting purposes may still be significant for insurance, warranty service, and obsolescence/ replacement policy tracking purposes. The district may record and maintain these non-GASB 34 asset inventories in subsidiary ledgers.

<u>Val Number</u>	<u>Description</u>	<u>Justification</u>
50450	<p>SESS - 2350 Legal and Accounting Services: SESS Schedule amounts for Special Education vary from prior year by 40% or more. Correct the data or enter a justification.</p> <p>SESS Schedule 2350: \$1,516.25 Prior Year SESS Schedule 2350: \$987.65</p>	<p>Additional legal costs were incurred in the current fiscal year compared to the previous year. Further, the percentage of special education students was slightly higher in the current fiscal year, resulting in an increase in expense allocated.</p>
50460	<p>SESS - 2420 Medical Services: SESS Schedule amounts for Special Education vary from prior year by 40% or more. Correct the data or enter a justification.</p> <p>SESS Schedule 2420: \$445.23 Prior Year SESS Schedule 2420: \$71.85</p>	<p>Medical expense fluctuates based on need. Additionally, the percentage of special education students was slightly higher in the current fiscal year, resulting in an increase in expense allocated to the special education function.</p>

Amounts Expressed in Whole Dollars

<u>General Fund</u> <u>(10)</u>	<u>Student Sponsored</u> <u>Activity Fund</u> <u>(21)</u>	<u>Public Purpose Trust</u> <u>(27)</u>	<u>Other Compt Approved</u> <u>(28)</u>	<u>Athletic / Activity</u> <u>(29)</u>
------------------------------------	-----------------------------------------------------------------	--------------------------------------------	--------------------------------------------	-------------------------------------------

Assets And Deferred Outflows Of Resources

Assets

0100 Cash and Cash Equivalents	5,760,872
0110 Investments	
0120 Taxes Receivable	1,361,961
0130 Due From Other Funds	
0141 Due From Other Governments	
0142 State Revenue Receivable	619,871
0143 Federal Revenue Receivable	22,523
0145 Other Intergovernmental Revenue Receivable	
0146 Due from Primary Government	
0147 Due from Component Unit	
0150 Other Receivables	
0170 Inventories	50,000
0180 Prepaid Expenses (Expenditures)	38,737
0190 Other Current Assets	

Total Assets	\$7,853,964
---------------------	--------------------

0910 Deferred Outflows of Resources

Total Assets And Deferred Outflows Of Resources	\$7,853,964
--------------------------------------------------------	--------------------

Amounts Expressed in Whole Dollars

<u>Capital Reserve (690.</u>	<u>Capital Reserve (1431)</u>	<u>Other Capital Projects</u>	<u>Debt Service</u>	<u>Permanent</u>
<u>1850)</u>	<u>(32)</u>	<u>Fund</u>	<u>(40)</u>	<u>(90)</u>
<u>(31)</u>		<u>(39)</u>		

Assets And Deferred Outflows Of Resources

Assets

0100 Cash and Cash Equivalents	1,815,525
0110 Investments	
0120 Taxes Receivable	
0130 Due From Other Funds	
0141 Due From Other Governments	
0142 State Revenue Receivable	
0143 Federal Revenue Receivable	
0145 Other Intergovernmental Revenue Receivable	
0146 Due from Primary Government	
0147 Due from Component Unit	
0150 Other Receivables	
0170 Inventories	
0180 Prepaid Expenses (Expenditures)	
0190 Other Current Assets	

Total Assets	\$1,815,525
---------------------	--------------------

0910 Deferred Outflows of Resources

Total Assets And Deferred Outflows Of Resources	\$1,815,525
--------------------------------------------------------	--------------------

Amounts Expressed in Whole Dollars

Total Governmental Funds

Assets And Deferred Outflows Of Resources

Assets	
0100 Cash and Cash Equivalents	7,576,397
0110 Investments	
0120 Taxes Receivable	1,361,961
0130 Due From Other Funds	
0141 Due From Other Governments	
0142 State Revenue Receivable	619,871
0143 Federal Revenue Receivable	22,523
0145 Other Intergovernmental Revenue Receivable	
0146 Due from Primary Government	
0147 Due from Component Unit	
0150 Other Receivables	
0170 Inventories	50,000
0180 Prepaid Expenses (Expenditures)	38,737
0190 Other Current Assets	
Total Assets	\$9,669,489
0910 Deferred Outflows of Resources	
Total Assets And Deferred Outflows Of Resources	\$9,669,489

Amounts Expressed in Whole Dollars

	<u>General Fund</u> <u>(10)</u>	<u>Student Sponsored</u> <u>Activity Fund</u> <u>(21)</u>	<u>Public Purpose Trust</u> <u>(27)</u>	<u>Other Compt Approved</u> <u>(28)</u>	<u>Athletic / Activity</u> <u>(29)</u>
Liabilities And Deferred Inflows Of Resources And Fund Balances					
Liabilities					
0400 Due to Other Funds	58,783				
0411 Due to Other Governments	11,010				
0412 Due to Primary Government					
0413 Due to Component Unit					
0420 Accounts Payable	93,413				
0430 Contracts Payable					
0440 Current Portion of Long-Term Debt					
0450 Short-Term Payables					
0461 Accrued Salaries and Benefits	946,074				
0462 Payroll Deductions and Withholding	582,795				
0480 Unearned Revenues	20,855				
0490 Other Current Liabilities					
Total Liabilities	\$1,712,930				
0950 Deferred Inflows of Resources	1,199,039				
Fund Balances					
0810 Nonspendable Fund Balance	88,737				
0820 Restricted Fund Balance					
0830 Committed Fund Balance					
0840 Assigned Fund Balance	2,300,000				
0850 Unassigned Fund Balance	2,553,258				
Total Fund Balances	\$4,941,995				
Total Liabilities, Deferred Inflows Of Resources And Fund Balances	\$7,853,964				

Amounts Expressed in Whole Dollars

<u>Capital Reserve (690.</u>	<u>Capital Reserve (1431)</u>	<u>Other Capital Projects</u>	<u>Debt Service</u>	<u>Permanent</u>
<u>1850)</u>	<u>(32)</u>	<u>Fund</u>	<u>(40)</u>	<u>(90)</u>
<u>(31)</u>		<u>(39)</u>		

Liabilities And Deferred Inflows Of Resources And Fund Balances

- Liabilities**
- 0400 Due to Other Funds
 - 0411 Due to Other Governments
 - 0412 Due to Primary Government
 - 0413 Due to Component Unit
 - 0420 Accounts Payable
 - 0430 Contracts Payable
 - 0440 Current Portion of Long-Term Debt
 - 0450 Short-Term Payables
 - 0461 Accrued Salaries and Benefits
 - 0462 Payroll Deductions and Withholding
 - 0480 Unearned Revenues
 - 0490 Other Current Liabilities

Total Liabilities

- 0950 Deferred Inflows of Resources

Fund Balances

- 0810 Nonspendable Fund Balance
- 0820 Restricted Fund Balance 1,815,525
- 0830 Committed Fund Balance
- 0840 Assigned Fund Balance
- 0850 Unassigned Fund Balance

Total Fund Balances \$1,815,525

Total Liabilities, Deferred Inflows Of Resources And Fund Balances \$1,815,525

Amounts Expressed in Whole Dollars

Total Governmental Funds

Liabilities And Deferred Inflows Of Resources And Fund Balances

Liabilities

0400 Due to Other Funds	58,783
0411 Due to Other Governments	11,010
0412 Due to Primary Government	
0413 Due to Component Unit	
0420 Accounts Payable	93,413
0430 Contracts Payable	
0440 Current Portion of Long-Term Debt	
0450 Short-Term Payables	
0461 Accrued Salaries and Benefits	946,074
0462 Payroll Deductions and Withholding	582,795
0480 Unearned Revenues	20,855
0490 Other Current Liabilities	

Total Liabilities \$1,712,930

0950 Deferred Inflows of Resources	1,199,039
------------------------------------	-----------

Fund Balances

0810 Nonspendable Fund Balance	88,737
0820 Restricted Fund Balance	1,815,525
0830 Committed Fund Balance	
0840 Assigned Fund Balance	2,300,000
0850 Unassigned Fund Balance	2,553,258

Total Fund Balances \$6,757,520

Total Liabilities, Deferred Inflows Of Resources And Fund Balances \$9,669,489

Amounts Expressed in Whole Dollars	<u>General Fund</u> <u>(10)</u>	<u>Student Sponsored</u> <u>Activity Fund</u> <u>(21)</u>	<u>Public Purpose Trust</u> <u>(27)</u>	<u>Other Compt Approved</u> <u>(28)</u>	<u>Athletic / Activity</u> <u>(29)</u>
Revenues					
6000 Revenue from Local Sources	4,496,251				
7000 Revenue from State Sources	10,644,806				
8000 Revenue from Federal Sources	1,623,744				
Total Revenues	\$16,764,801				
Expenditures					
1000 Instruction	8,931,439				
2000 Support Services	5,324,003				
3000 Operation of Non-Instructional Services	589,771				
4000 Facilities Acquisition, Construction and Improvement Services	1,238,392				
5110 Debt Service	702,646				
5130 Refund of Prior Year Revenues / Receipts					
5140 Leases and Other Right-to-Use Arrangements	7,390				
Total Expenditures	\$16,793,641				
Excess (Deficiency) Of Revenues Over Expenditures	(\$28,840)				
Other Financing Sources (Uses)					
9110 Face Value of Bonds Issued					
9120 Proceeds from Refunding of Bonds					
9130 Bond Premiums					
9200 Proceeds from Extended Term Financing, Leases, and Other Right-to-Use Arrangements	52,332				
9300 Interfund Transfers - IN					
9400 Sale of or Compensation for Loss of Fixed Assets					
9710 Transfers from Component Units					
9720 Transfers from Primary Governments					
9910 Other Financing Sources Not Listed in the 9000 Series					
9990 Insurance Recoveries					
5120 Debt Service – Refunded Bonds					
5150 Bond Discounts					
5200 Interfund Transfers – Out	1,000,000				
5300 Transfers Out to Component Units/Primary Governments					
Total Other Financing Sources (Uses)	(\$947,668)				

Amounts Expressed in Whole Dollars	<u>Capital Reserve (690.1850)</u> <u>(31)</u>	<u>Capital Reserve (1431)</u> <u>(32)</u>	<u>Other Capital Projects</u> <u>Fund</u> <u>(39)</u>	<u>Debt Service</u> <u>(40)</u>	<u>Permanent</u> <u>(90)</u>
Revenues					
6000 Revenue from Local Sources			46,049		
7000 Revenue from State Sources					
8000 Revenue from Federal Sources					
Total Revenues			\$46,049		
Expenditures					
1000 Instruction					
2000 Support Services					
3000 Operation of Non-Instructional Services					
4000 Facilities Acquisition, Construction and Improvement Services			461,331		
5110 Debt Service					
5130 Refund of Prior Year Revenues / Receipts					
5140 Leases and Other Right-to-Use Arrangements					
Total Expenditures			\$461,331		
Excess (Deficiency) Of Revenues Over Expenditures			(\$415,282)		
Other Financing Sources (Uses)					
9110 Face Value of Bonds Issued					
9120 Proceeds from Refunding of Bonds					
9130 Bond Premiums					
9200 Proceeds from Extended Term Financing, Leases, and Other Right-to-Use Arrangements					
9300 Interfund Transfers - IN			1,000,000		
9400 Sale of or Compensation for Loss of Fixed Assets					
9710 Transfers from Component Units					
9720 Transfers from Primary Governments					
9910 Other Financing Sources Not Listed in the 9000 Series					
9990 Insurance Recoveries					
5120 Debt Service – Refunded Bonds					
5150 Bond Discounts					
5200 Interfund Transfers – Out					
5300 Transfers Out to Component Units/Primary Governments					
Total Other Financing Sources (Uses)			\$1,000,000		

Amounts Expressed in Whole Dollars	<u>Total Governmental Funds</u>
Revenues	
6000 Revenue from Local Sources	4,542,300
7000 Revenue from State Sources	10,644,806
8000 Revenue from Federal Sources	1,623,744
Total Revenues	\$16,810,850
Expenditures	
1000 Instruction	8,931,439
2000 Support Services	5,324,003
3000 Operation of Non-Instructional Services	589,771
4000 Facilities Acquisition, Construction and Improvement Services	1,699,723
5110 Debt Service	702,646
5130 Refund of Prior Year Revenues / Receipts	
5140 Leases and Other Right-to-Use Arrangements	7,390
Total Expenditures	\$17,254,972
Excess (Deficiency) Of Revenues Over Expenditures	(\$444,122)
Other Financing Sources (Uses)	
9110 Face Value of Bonds Issued	
9120 Proceeds from Refunding of Bonds	
9130 Bond Premiums	
9200 Proceeds from Extended Term Financing, Leases, and Other Right-to-Use Arrangements	52,332
9300 Interfund Transfers - IN	1,000,000
9400 Sale of or Compensation for Loss of Fixed Assets	
9710 Transfers from Component Units	
9720 Transfers from Primary Governments	
9910 Other Financing Sources Not Listed in the 9000 Series	
9990 Insurance Recoveries	
5120 Debt Service – Refunded Bonds	
5150 Bond Discounts	
5200 Interfund Transfers – Out	1,000,000
5300 Transfers Out to Component Units/Primary Governments	
Total Other Financing Sources (Uses)	\$52,332

Amounts Expressed in Whole Dollars	<u>General Fund</u> <u>(10)</u>	<u>Student Sponsored</u> <u>Activity Fund</u> <u>(21)</u>	<u>Public Purpose Trust</u> <u>(27)</u>	<u>Other Compt Approved</u> <u>(28)</u>	<u>Athletic / Activity</u> <u>(29)</u>
Special And Extraordinary Items					
9920 Special Items – Gains					
9930 Extraordinary Items – Gains					
5520 Special Items – Losses					
5530 Extraordinary Items – Losses					
Net Change In Fund Balances	(\$976,508)				
Fund Balance					
0001 Fund Balance - Beginning of Fiscal Year	5,918,503				
Fund Balance - End Of Year	\$4,941,995				

Amounts Expressed in Whole Dollars	<u>Capital Reserve (690.</u> <u>1850)</u> <u>(31)</u>	<u>Capital Reserve (1431)</u> <u>(32)</u>	<u>Other Capital Projects</u> <u>Fund</u> <u>(39)</u>	<u>Debt Service</u> <u>(40)</u>	<u>Permanent</u> <u>(90)</u>
Special And Extraordinary Items					
9920 Special Items – Gains					
9930 Extraordinary Items – Gains					
5520 Special Items – Losses					
5530 Extraordinary Items – Losses					
Net Change In Fund Balances				\$584,718	
Fund Balance					
0001 Fund Balance - Beginning of Fiscal Year			1,230,807		
Fund Balance - End Of Year				\$1,815,525	

Amounts Expressed in Whole Dollars	<u>Total Governmental Funds</u>
Special And Extraordinary Items	
9920 Special Items – Gains	
9930 Extraordinary Items – Gains	
5520 Special Items – Losses	
5530 Extraordinary Items – Losses	
Net Change In Fund Balances	(\$391,790)
Fund Balance	
0001 Fund Balance - Beginning of Fiscal Year	7,149,310
Fund Balance - End Of Year	\$6,757,520

Amounts Expressed in Whole Dollars	<u>Food Service</u> <u>(51)</u>	<u>Child Care</u> <u>Operations</u> <u>(52)</u>	<u>Other Enterprise</u> <u>(58)</u>	<u>TOTAL</u>	<u>Internal Service</u> <u>(60)</u>
Assets And Deferred Outflows Of Resources					
Current Assets					
0100 Cash and Cash Equivalents	340,064			340,064	
0110 Investments					
0130 Due From Other Funds	58,783			58,783	
0141 Due From Other Governments					
0142 State Revenue Receivable					
0143 Federal Revenue Receivable					
0146 Due from Primary Government					
0147 Due from Component Unit					
0150 Other Receivables					
0170 Inventories	49,401			49,401	
0180 Prepaid Expenses (Expenditures)					
0190 Other Current Assets					
Total Current Assets	\$448,248			\$448,248	
Noncurrent Assets					
0211 Land					
0212 Site Improvements (Net)					
0220 Buildings and Building Improvements (Net)					
0230 Tangible Property and Intangible Right-To-Use Assets (Net)	433,888			433,888	
0250 Construction in Progress	65,194			65,194	
0260 Long Term Prepayments					
0290 Other Noncurrent Assets					
Total Noncurrent Assets	\$499,082			\$499,082	
0910 Deferred Outflows of Resources					
Total Assets And Deferred Outflows Of Resources	\$947,330			\$947,330	

Amounts Expressed in Whole Dollars	<u>Food Service</u> <u>(51)</u>	<u>Child Care</u> <u>Operations</u> <u>(52)</u>	<u>Other Enterprise</u> <u>(58)</u>	<u>TOTAL</u>	<u>Internal Service</u> <u>(60)</u>
Liabilities And Deferred Inflows Of Resources And Net Position					
Current Liabilities					
0400 Due to Other Funds					
0411 Due to Other Governments					
0413 Due to Component Unit					
0420 Accounts Payable	300			300	
0430 Contracts Payable					
0440 Current Portion of Long-Term Debt	3,555			3,555	
0450 Short-Term Payables					
0461 Accrued Salaries and Benefits					
0462 Payroll Deductions and Withholding					
0480 Unearned Revenues	44,539			44,539	
0490 Other Current Liabilities	50			50	
Total Current Liabilities	\$48,444			\$48,444	
Noncurrent Liabilities					
0510 Bonds Payable					
0520 Extended-Term Financing Agreements Payable					
0530 Lease and Other Right-To-Use Obligations					
0540 Accumulated Compensated Absences	34,163			34,163	
0550 Authority Lease Obligations					
0560 Other Post-Employment Benefits (OPEB)					
0570 Net Pension Liability					
0599 Other Noncurrent Liabilities					
Total Noncurrent Liabilities	\$34,163			\$34,163	
Total Liabilities	\$82,607			\$82,607	
0950 Deferred Inflows of Resources					
Net Position					
0791 Net Investment in Capital Assets	499,082			499,082	
0008 Restricted Net Position (0792 – 0798)					
0799 Unrestricted Net Position	365,641			365,641	
Total Net Position	\$864,723			\$864,723	
Total Liabilities And Deferred Inflows Of Resources And Net Position	\$947,330			\$947,330	

Amounts Expressed in Whole Dollars	<u>Food Service</u> <u>(51)</u>	<u>Child Care Operations</u> <u>(52)</u>	<u>Other Enterprise</u> <u>(58)</u>	<u>TOTAL</u>	<u>Internal Service</u> <u>(60)</u>
Operating Revenues					
6600 Food Service Revenue	230,714			230,714	
0071 Charges for Services					
0072 Other Operating Revenue					
Total Operating Revenues	\$230,714			\$230,714	
Operating Expenses					
100 Personnel Services – Salaries	234,428			234,428	
200 Personnel Services – Employee Benefits	201,068			201,068	
300 Purchased Professional and Technical Services					
400 Purchased Property Services	4,684			4,684	
500 Other Purchased Services					
600 Supplies	402,564			402,564	
740 Depreciation	52,525			52,525	
770 Amortization Expense					
810 Dues and Fees	1,695			1,695	
880 Refunds of Prior Years' Receipts					
890 Miscellaneous Expenditures					
Total Operating Expenses	\$896,964			\$896,964	
Operating Income (Loss)	(\$666,250)			(\$666,250)	
Non Operating Revenues (Expenses)					
6500 Earnings on Investments	11,380			11,380	
6830 Federal Revenue from Intermediary Sources					
6920 Contributions and Donations from Private Sources					
6930 Gains or Losses on Sale of Fixed Assets					
6991 Refunds of a Prior Year Expenditure					
7000 Revenue from State Sources	127,687			127,687	
8000 Revenue from Federal Sources	498,709			498,709	
9990 Insurance Recoveries					
820 Claims and Judgments Against the LEA					
830 Interest					
TOTAL Non Operating Revenues (Expenses)	\$637,776			\$637,776	
Income (Loss) Before Contributions And Transfers	(\$28,474)			(\$28,474)	

Amounts Expressed in Whole Dollars	<u>Food Service</u> <u>(51)</u>	<u>Child Care Operations</u> <u>(52)</u>	<u>Other Enterprise</u> <u>(58)</u>	<u>TOTAL</u>	<u>Internal Service</u> <u>(60)</u>
Contributions, Transfers, and Special and Extraordinary Items					
5200 Interfund Transfers – Out					
5300 Transfers Out to Component Units/Primary Governments					
5520 Special Items – Losses					
5530 Extraordinary Items – Losses					
9300 Interfund Transfers - IN					
9500 Capital Contributions	40,500			40,500	
9700 Transfers IN From Component Units/Primary Governments					
9920 Special Items – Gains					
9930 Extraordinary Items – Gains					
Change In Net Position	\$12,026			\$12,026	
0002 Net Position - Beginning of Fiscal Year	852,697			852,697	
0003 Accounting Changes / Residual Equity Transfers					
Net Position - End Of Year	\$864,723			\$864,723	

Amounts Expressed in Whole Dollars	<u>Food Service</u> <u>(51)</u>	<u>Child Care Operations</u> <u>(52)</u>	<u>Other Enterprise</u> <u>(58)</u>	<u>TOTAL</u>	<u>Internal Service(60)</u>
Cash Flows From Operating Activities					
0011 Cash Receipts From Users	227,543			227,543	
0012 Cash Receipts From Assessments Made to Other Funds					
0013 Cash Receipts From Earnings on Investments					
0014 Cash Receipts From Other Operating Revenue					
0015 Cash Payments To Employees For Services	235,986			235,986	
0016 Cash Payments For Insurance Claims					
0017 Cash Payments To Suppliers For Goods and Services	604,878			604,878	
0018 Cash Payments For Other Operating Expenses					
Net Cash Provided By (Used For) Operating Activities	(\$613,321)			(\$613,321)	
Cash Flows From Non-Capital Financing Activities					
0021 Receipts From Local Sources - 6000					
0022 Receipts From State Sources - 7000	117,263			117,263	
0023 Receipts From Federal Sources -8000	429,534			429,534	
0024 Notes and Loans Received (Repaid)					
0025 Interest Paid on Notes/Loans - 5100-830					
0026 Operating Transfers In (Out)/Residual Equity Trans					
0027 Operating Transfers In (Out) Primary Government / Comp Unit					
0028 Receipts From Refund of Prior Year Expenditures - 6991					
0029 Special and Extraordinary Gains (losses)					
0030 Receipts from Insurance Recoveries -9990					
Net Cash Prov By (Used for) Non-Capital Financing Activities	\$546,797			\$546,797	
Cash Flows From Capital and Related Financing Activities					
0031 Payments For Fac Acq, Const, and Imp - 4000	(16,845)			(16,845)	
0032 Gain / (Loss) on Sale of Fixed Assets - 6930					
0033 Proceeds From Extended Term Financing - 9200					
0034 Principal Paid on Financing Agreements					
0035 Interest Paid on Financing Agreements - 5100-830					
0036 (Inc) Dec in Contributed Capital					
Net Cash Prov By (Used for) Capital and Related Financing Activities	(\$16,845)			(\$16,845)	
Cash Flows From Investing Activities					
0041 Earnings on Investments - 6500	11,380			11,380	
0042 Purchase of Inv Securities / Deposits to Inv Pools					
0043 Receipts From Investment Pool Withdrawals					
0044 Proceeds from Sale and Maturity of Inv Securities					

LEA : 108561803 Conemaugh Township Area SD

Printed 11/15/2023 3:08:40 PM

0045 Loans Received (Paid)

Net Cash Prov By (Used for) Investing Activities	\$11,380	\$11,380
---------------------------------------------------------	-----------------	-----------------

	<u>Food Service</u> <u>(51)</u>	<u>Child Care Operations</u> <u>(52)</u>	<u>Other Enterprise</u> <u>(58)</u>	<u>TOTAL</u>	<u>Internal Service</u> <u>(60)</u>
Net Increase (Decrease) in Cash Flows	(71,989)			(71,989)	
0004 Cash and Cash Equivalents Beginning of Year	412,053			412,053	
Cash and Cash Equivalents at Year End	\$340,064			\$340,064	

Reconciliation of Operating Income (Loss) To Net Cash Provided by (Used For) Operating Activities

0005 Operating Income (Loss) per REP	(666,250)			(666,250)	
Adjustments					
0051 Depreciation and Net Amortization	52,525			52,525	
0052 Provision for Uncollectible Accounts					
0053 Other Adjustments					
Effect of Changes in Assets, Liabilities, Deferred Outflows and Deferred Inflows					
0054 (Inc) Dec In Accounts Receivable (0120-0150)					
0055 Advances to Other Funds					
0056 (Inc) Dec in Inventories (0170)	4,833			4,833	
0057 (Inc) Dec in Prepaid Expenses (0180)					
0058 (Inc) Dec in Other Current or Noncurrent Assets					
0064 Deferred Outflows (0910)					
0059 Inc (Dec) in Accounts Payable (0400-0450)	300			300	
0060 Inc (Dec) in Accrued Salaries/Benefits (0461)	(1,558)			(1,558)	
0065 Inc (Dec) in Net Pension Liabilities (0570)					
0066 Inc (Dec) in Other Postemp Benefit Oblig (0560)					
0061 Inc (Dec) in Payroll Deductions/Withholding (0462)					
0062 Inc (Dec) in Unearned Revenue (0480)	(3,171)			(3,171)	
0063 Inc (Dec) in Other Current or Noncurrent Liabilities					
0067 Deferred Inflows (0950)					
Total Adjustments	\$52,929			\$52,929	
Cash Provided By (Used for) Total	(\$613,321)			(\$613,321)	

COMBINED STATEMENT OF CASH FLOWS
SCHEDULE OF NONCASH INVESTING, CAPITAL, AND FINANCING ACTIVITIES

Explanation of Transaction and Balance Sheet Effect	Amount
Capital assets financed by capital projects fund	40,500
Total	\$40,500

LEA : 108561803 Conemaugh Township Area SD

Printed 11/15/2023 3:08:41 PM

Amounts Expressed in Whole Dollars

Private Purpose Trust
(71)

Investment Trust
(72)

Pension Trust
(73)

Student Activity Custodial
(81)

Assets And Deferred Outflows Of Resources

Assets

0100 Cash and Cash Equivalents					82,920
0110 Investments					
0130 Due From Other Funds					
0140 Due from Other Governments, Primary Government and Component Units					
0150 Other Receivables					
0170 Inventories					
0180 Prepaid Expenses (Expenditures)					
0190 Other Current Assets					
0220 Buildings and Building Improvements (Net)					
0230 Tangible Property and Intangible Right-To-Use Assets (Net)					

Total Assets **\$82,920**

0910 Deferred Outflows of Resources

Total Assets And Deferred Outflows Of Resources **\$82,920**

LEA : 108561803 Conemaugh Township Area SD

Printed 11/15/2023 3:08:41 PM

Amounts Expressed in Whole Dollars	<u>Other Custodial</u> <u>(89)</u>	<u>Fiduciary Component Units</u> <u>(98)</u>	<u>Total Fiduciary Funds</u>
Assets And Deferred Outflows Of Resources			
Assets			
0100 Cash and Cash Equivalents			82,920
0110 Investments			
0130 Due From Other Funds			
0140 Due from Other Governments, Primary Government and Component Units			
0150 Other Receivables			
0170 Inventories			
0180 Prepaid Expenses (Expenditures)			
0190 Other Current Assets			
0220 Buildings and Building Improvements (Net)			
0230 Tangible Property and Intangible Right-To-Use Assets (Net)			
Total Assets			\$82,920
0910 Deferred Outflows of Resources			
Total Assets And Deferred Outflows Of Resources			\$82,920

LEA : 108561803 Conemaugh Township Area SD

Printed 11/15/2023 3:08:41 PM

Amounts Expressed in Whole Dollars

Private Purpose Trust
(71)

Investment Trust
(72)

Pension Trust
(73)

Student Activity Custodial
(81)

Liabilities, Deferred Inflows Of Resources And Net Position

Liabilities

- 0400 Due to Other Funds
- 0410 Due to Other Governments, Primary Government and Component Units
- 0420 Accounts Payable
- 0430 Contracts Payable
- 0450 Short-Term Payables
- 0460 Payroll Accruals and Withholdings
- 0480 Unearned Revenues
- 0490 Other Current Liabilities

Total Liabilities

- 0950 Deferred Inflows of Resources

Net Position

- 0791 Net Investment in Capital Assets
- 0009 Restricted Net Position (0792 – 0798) 82,920
- 0799 Unrestricted Net Position

Total Net Position

\$82,920

Total Liabilities, Deferred Inflows Of Resources And Net Position

\$82,920

LEA : 108561803 Conemaugh Township Area SD

Printed 11/15/2023 3:08:41 PM

Amounts Expressed in Whole Dollars	<u>Other Custodial</u> <u>(89)</u>	<u>Fiduciary Component Units</u> <u>(98)</u>	<u>Total Fiduciary Funds</u>
Liabilities, Deferred Inflows Of Resources And Net Position			
Liabilities			
0400 Due to Other Funds			
0410 Due to Other Governments, Primary Government and Component Units			
0420 Accounts Payable			
0430 Contracts Payable			
0450 Short-Term Payables			
0460 Payroll Accruals and Withholdings			
0480 Unearned Revenues			
0490 Other Current Liabilities			
Total Liabilities			
0950 Deferred Inflows of Resources			
Net Position			
0791 Net Investment in Capital Assets			
0009 Restricted Net Position (0792 – 0798)			82,920
0799 Unrestricted Net Position			
Total Net Position			\$82,920
Total Liabilities, Deferred Inflows Of Resources And Net Position			\$82,920

Amounts Expressed in Whole Dollars	<u>Private Purpose Trust</u> (71)	<u>Investment Trust</u> (72)	<u>Pension Trust</u> (73)	<u>Student Activity</u> <u>Custodial</u> (81)	<u>Other Custodial</u> (89)	<u>Fiduciary Component</u> <u>Units</u> (98)
Additions						
0091 Gifts and Contributions				4,535		
0095 Net Investment Earnings				2,440		
0092 Other Additions				124,290		
Deductions						
0093 Scholarships Awarded						
0094 Other Deductions				108,726		
Change In Net Position				\$22,539		
0006 Net Position – Beginning of Fiscal Year				60,381		
0007 Net Position Held in Trust for Pension Benefits						
Net Position - End of Fiscal Year				\$82,920		

Amounts Expressed in Whole Dollars	<u>Total Fiduciary Funds</u>
Additions	
0091 Gifts and Contributions	4,535
0095 Net Investment Earnings	2,440
0092 Other Additions	124,290
Deductions	
0093 Scholarships Awarded	
0094 Other Deductions	108,726
Change in Net Position	\$22,539
0006 Net Position – Beginning of Fiscal Year	60,381
0007 Net Position Held in Trust for Pension Benefits	
Net Position - End of Fiscal Year	\$82,920

	<u>Revenue Reported In Current Year</u>	<u>Current Year Tax Accrual</u>	<u>Prior Year Tax Accrual</u>	<u>Taxes Collected In Current Year</u>
Revenue from Local Sources				
6111 Current Real Estate Taxes	2,628,650.97			2,628,650.97
6112 Interim Real Estate Taxes	25,067.88			25,067.88
6113 Public Utility Realty Taxes	3,876.37			3,876.37
6114 Payments in Lieu of Current Taxes - State / Local	109.56			109.56
6120 Current Per Capita Taxes, Section 679	14,691.90			14,691.90
6141 Current Act 511 Per Capita Taxes	14,691.90			14,691.90
6143 Current Act 511 Local Services Taxes	6,302.02	149.07	23.23	6,176.18
6151 Current Act 511 Earned Income Taxes	857,271.15	9,700.72	12,939.96	860,510.39
6152 Current Act 511 Occupation Taxes	49,020.00			49,020.00
6153 Current Act 511 Real Estate Transfer Taxes	58,713.30	4,242.75	12,286.00	66,756.55
6411 Delinquent Real Estate Taxes	333,632.72	148,238.74	72,617.53	258,011.51
6420 Delinquent Per Capita Taxes, Section 679	2,529.50	89.75		2,439.75
6440 Delinquent Local Enabling Taxes - Flat Rate Assessments	2,529.50	88.00		2,441.50
6451 Delinquent Act 511 Earned Income Taxes	17,465.84	412.50		17,053.34
6500 Earnings on Investments	202,338.62			
6700 Revenues from LEA Activities	37,449.00			
6832 Federal IDEA Revenue Received as Pass Through	206,842.38			
6910 Rentals	410.50			
6920 Contributions and Donations from Private Sources	9,939.00			
6941 Regular Day School Tuition	13,687.26			
6991 Refunds of a Prior Year Expenditure	4,523.00			
6999 Other Revenues Not Specified Above	6,508.89			
TOTAL Revenue from Local Sources	\$4,496,251.26	\$162,921.53	\$97,866.72	\$3,949,497.80

**Revenue Reported
In Current Year**

Revenue from State Sources

7111 Basic Education Funding-Formula	6,953,708.11		
7112 Basic Education Funding-Social Security	278,847.88		
7160 Tuition for Orphans Subsidy	30,504.21		
7271 Special Education funds for School-Aged Pupils	769,528.01		
7311 Pupil Transportation Subsidy	539,992.27		
7312 Nonpublic and Charter School Pupil Transportation Subsidy	8,085.00		
7320 Rental and Sinking Fund Payments / Building Reimbursement Subsidy	80,620.63		
7330 Health Services (Medical, Dental, Nurse, Act 25)	19,873.93		
7340 State Property Tax Reduction Allocation	341,617.52		
7362 School Mental Health & Safety and Security Grants	24,704.29		
7369 Other Safe School Grants	86,252.63		
7505 Ready to Learn Block Grant	171,816.00		
7820 State Share of Retirement Contributions	1,339,255.82		
TOTAL Revenue from State Sources	\$10,644,806.30		

**Revenue Reported
In Current Year**

Revenue from Federal Sources

8514 Title I - Improving the Academic Achievement of the Disadvantaged	162,364.81			
8515 Title II - Preparing, Training, and Recruiting High Quality Teachers and Principals	21,638.00			
8517 Title IV - 21st Century Schools	12,608.70			
8743 ESSER II - Elementary and Secondary School Emergency Relief Fund	501,584.36			
8744 ARP ESSER - Elementary and Secondary School Emergency Relief Fund	860,579.72			
8747 ARP ECF - Emergency Connectivity Fund	4,108.26			
8751 ARP ESSER Learning Loss	26,422.00			
8752 ARP ESSER Summer Programs	11,326.12			
8753 ARP ESSER Afterschool Programs	3,887.32			
8810 School-Based Access Medicaid Reimbursement Program (SBAP) Reimbursements (Access)	16,090.00			
8820 Medical Assistance Reimbursement for Administrative Claiming (Quarterly) Program	3,135.18			
TOTAL Revenue from Federal Sources	\$1,623,744.47			

**Revenue Reported
In Current Year**

Other Financing Sources

9220 Leases and Other Right-to-Use Arrangements	52,331.91			
TOTAL Other Financing Sources	\$52,331.91			
TOTAL FROM ALL SOURCES	\$16,817,133.94	\$162,921.53	\$97,866.72	\$3,949,497.80

LEA : 108561803 Conemaugh Township Area SD

Printed 11/15/2023 3:08:46 PM

	<u>General Fund (10)</u>	<u>Student Sponsored Activity Fund (21)</u>	<u>Public Purpose Trust (27)</u>	<u>Other Compt Approved (28)</u>	<u>Athletic / Activity (29)</u>	<u>Capital Reserve (690, 1850) (31)</u>
6000 Revenue from Local Sources						
6111 Current Real Estate Taxes	2,628,650.97					
6112 Interim Real Estate Taxes	25,067.88					
6113 Public Utility Realty Taxes	3,876.37					
6114 Payments in Lieu of Current Taxes - State / Local	109.56					
6120 Current Per Capita Taxes, Section 679	14,691.90					
6141 Current Act 511 Per Capita Taxes	14,691.90					
6143 Current Act 511 Local Services Taxes	6,302.02					
6151 Current Act 511 Earned Income Taxes	857,271.15					
6152 Current Act 511 Occupation Taxes	49,020.00					
6153 Current Act 511 Real Estate Transfer Taxes	58,713.30					
6411 Delinquent Real Estate Taxes	333,632.72					
6420 Delinquent Per Capita Taxes, Section 679	2,529.50					
6440 Delinquent Local Enabling Taxes - Flat Rate Assessments	2,529.50					
6451 Delinquent Act 511 Earned Income Taxes	17,465.84					
6500 Earnings on Investments	202,338.62					
6700 Revenues from LEA Activities	37,449.00					
6832 Federal IDEA Revenue Received as Pass Through	206,842.38					
6910 Rentals	410.50					
6920 Contributions and Donations from Private Sources	9,939.00					
6941 Regular Day School Tuition	13,687.26					
6991 Refunds of a Prior Year Expenditure	4,523.00					
6999 Other Revenues Not Specified Above	6,508.89					
6000 Total Revenue from Local Sources	\$4,496,251.26					
7000 Revenue from State Sources						
7111 Basic Education Funding-Formula	6,953,708.11					
7112 Basic Education Funding-Social Security	278,847.88					
7160 Tuition for Orphans Subsidy	30,504.21					
7271 Special Education funds for School-Aged Pupils	769,528.01					
7311 Pupil Transportation Subsidy	539,992.27					
7312 Nonpublic and Charter School Pupil Transportation Subsidy	8,085.00					
7320 Rental and Sinking Fund Payments / Building Reimbursement Subsidy	80,620.63					
7330 Health Services (Medical, Dental, Nurse, Act 25)	19,873.93					
7340 State Property Tax Reduction Allocation	341,617.52					
7362 School Mental Health & Safety and Security Grants	24,704.29					
7369 Other Safe School Grants	86,252.63					

LEA : 108561803 Conemaugh Township Area SD

Printed 11/15/2023 3:08:46 PM

	<u>Capital Reserve</u> <u>(1431) (32)</u>	<u>Other Capital</u> <u>Projects Fund (39)</u>	<u>Debt Service (40)</u>	<u>Permanent (90)</u>	<u>Total</u>
6000 Revenue from Local Sources					
6111 Current Real Estate Taxes					2,628,650.97
6112 Interim Real Estate Taxes					25,067.88
6113 Public Utility Realty Taxes					3,876.37
6114 Payments in Lieu of Current Taxes - State / Local					109.56
6120 Current Per Capita Taxes, Section 679					14,691.90
6141 Current Act 511 Per Capita Taxes					14,691.90
6143 Current Act 511 Local Services Taxes					6,302.02
6151 Current Act 511 Earned Income Taxes					857,271.15
6152 Current Act 511 Occupation Taxes					49,020.00
6153 Current Act 511 Real Estate Transfer Taxes					58,713.30
6411 Delinquent Real Estate Taxes					333,632.72
6420 Delinquent Per Capita Taxes, Section 679					2,529.50
6440 Delinquent Local Enabling Taxes - Flat Rate Assessments					2,529.50
6451 Delinquent Act 511 Earned Income Taxes					17,465.84
6500 Earnings on Investments	46,048.96				248,387.58
6700 Revenues from LEA Activities					37,449.00
6832 Federal IDEA Revenue Received as Pass Through					206,842.38
6910 Rentals					410.50
6920 Contributions and Donations from Private Sources					9,939.00
6941 Regular Day School Tuition					13,687.26
6991 Refunds of a Prior Year Expenditure					4,523.00
6999 Other Revenues Not Specified Above					6,508.89
6000 Total Revenue from Local Sources	\$46,048.96				\$4,542,300.22
7000 Revenue from State Sources					
7111 Basic Education Funding-Formula					6,953,708.11
7112 Basic Education Funding-Social Security					278,847.88
7160 Tuition for Orphans Subsidy					30,504.21
7271 Special Education funds for School-Aged Pupils					769,528.01
7311 Pupil Transportation Subsidy					539,992.27
7312 Nonpublic and Charter School Pupil Transportation Subsidy					8,085.00
7320 Rental and Sinking Fund Payments / Building Reimbursement Subsidy					80,620.63
7330 Health Services (Medical, Dental, Nurse, Act 25)					19,873.93
7340 State Property Tax Reduction Allocation					341,617.52
7362 School Mental Health & Safety and Security Grants					24,704.29
7369 Other Safe School Grants					86,252.63

LEA : 108561803 Conemaugh Township Area SD

Printed 11/15/2023 3:08:46 PM

	<u>General Fund (10)</u>	<u>Student Sponsored Activity Fund (21)</u>	<u>Public Purpose Trust (27)</u>	<u>Other Compt Approved (28)</u>	<u>Athletic / Activity (29)</u>	<u>Capital Reserve (690.1850) (31)</u>
7000 Revenue from State Sources						
7505 Ready to Learn Block Grant	171,816.00					
7820 State Share of Retirement Contributions	1,339,255.82					
7000 Total Revenue from State Sources	\$10,644,806.30					
8000 Revenue from Federal Sources						
8514 Title I - Improving the Academic Achievement of the Disadvantaged	162,364.81					
8515 Title II - Preparing, Training, and Recruiting High Quality Teachers and Principals	21,638.00					
8517 Title IV - 21st Century Schools	12,608.70					
8743 ESSER II - Elementary and Secondary School Emergency Relief Fund	501,584.36					
8744 ARP ESSER - Elementary and Secondary School Emergency Relief Fund	860,579.72					
8747 ARP ECF - Emergency Connectivity Fund	4,108.26					
8751 ARP ESSER Learning Loss	26,422.00					
8752 ARP ESSER Summer Programs	11,326.12					
8753 ARP ESSER Afterschool Programs	3,887.32					
8810 School-Based Access Medicaid Reimbursement Program (SBAP) Reimbursements (Access)	16,090.00					
8820 Medical Assistance Reimbursement for Administrative Claiming (Quarterly) Program	3,135.18					
8000 Total Revenue from Federal Sources	\$1,623,744.47					
9000 Other Financing Sources						
9220 Leases and Other Right-to-Use Arrangements	52,331.91					
9310 General Fund Transfers						
9000 Total Other Financing Sources	\$52,331.91					
Total From All Sources	\$16,817,133.94					

LEA : 108561803 Conemaugh Township Area SD

Printed 11/15/2023 3:08:46 PM

	<u>Capital Reserve</u> <u>(1431) (32)</u>	<u>Other Capital</u> <u>Projects Fund (39)</u>	<u>Debt Service (40)</u>	<u>Permanent (90)</u>	<u>Total</u>
7000 Revenue from State Sources					
7505 Ready to Learn Block Grant					171,816.00
7820 State Share of Retirement Contributions					1,339,255.82
7000 Total Revenue from State Sources					\$10,644,806.30
8000 Revenue from Federal Sources					
8514 Title I - Improving the Academic Achievement of the Disadvantaged					162,364.81
8515 Title II - Preparing, Training, and Recruiting High Quality Teachers and Principals					21,638.00
8517 Title IV - 21st Century Schools					12,608.70
8743 ESSER II - Elementary and Secondary School Emergency Relief Fund					501,584.36
8744 ARP ESSER - Elementary and Secondary School Emergency Relief Fund					860,579.72
8747 ARP ECF - Emergency Connectivity Fund					4,108.26
8751 ARP ESSER Learning Loss					26,422.00
8752 ARP ESSER Summer Programs					11,326.12
8753 ARP ESSER Afterschool Programs					3,887.32
8810 School-Based Access Medicaid Reimbursement Program (SBAP) Reimbursements (Access)					16,090.00
8820 Medical Assistance Reimbursement for Administrative Claiming (Quarterly) Program					3,135.18
8000 Total Revenue from Federal Sources					\$1,623,744.47
9000 Other Financing Sources					
9220 Leases and Other Right-to-Use Arrangements					52,331.91
9310 General Fund Transfers	1,000,000.00				1,000,000.00
9000 Total Other Financing Sources	\$1,000,000.00				\$1,052,331.91
Total From All Sources	\$1,046,048.96				\$17,863,182.90

	<u>General Fund (10)</u>	<u>Student Sponsored Activity Fund (21)</u>	<u>Public Purpose Trust (27)</u>	<u>Other Compt Approved (28)</u>	<u>Athletic / Activity (29)</u>	<u>Capital Reserve (690. 1850) (31)</u>
Revenue from Local Sources	4,496,251.26					
Revenue from State Sources	10,644,806.30					
Revenue from Federal Sources	1,623,744.47					
Other Financing Sources	52,331.91					
Total From All Sources	\$16,817,133.94					

LEA : 108561803 Conemaugh Township Area SD

Printed 11/15/2023 3:08:47 PM

	<u>Capital Reserve (1431)</u> <u>(32)</u>	<u>Other Capital Projects</u> <u>Fund (39)</u>	<u>Debt Service (40)</u>	<u>Permanent (90)</u>	<u>Total</u>
Revenue from Local Sources	46,048.96				4,542,300.22
Revenue from State Sources					10,644,806.30
Revenue from Federal Sources					1,623,744.47
Other Financing Sources	1,000,000.00				1,052,331.91
Total From All Sources	\$1,046,048.96				\$17,863,182.90

General Fund (10)

	<u>Total</u>
1000 Instruction	
100 <u>Personnel Services – Salaries</u>	
100 Personnel Services – Salaries	4,062,477.60
Total Personnel Services – Salaries	\$4,062,477.60
200 <u>Personnel Services – Employee Benefits</u>	
210 Group Insurance – Contracted Provider	902,234.57
220 Social Security Contributions	301,509.43
230 PSERS Retirement Contributions	1,407,007.89
260 Workers’ Compensation	10,963.23
292 Health Savings Accounts	65,462.00
299 All Other Employee Benefits	24,695.00
Total Personnel Services – Employee Benefits	\$2,711,872.12
300 <u>Purchased Professional and Technical Services</u>	
322 Professional Educational Services – Ius	107,497.57
323 Professional Educational Services – Other Educational Agencies	130,917.64
329 Professional Educational Services – Other	338,660.48
330 Other Professional Services	28,507.75
340 Technical Services	15,714.50
390 Other Purchased Professional and Technical Services	3,719.71
Total Purchased Professional and Technical Services	\$625,017.65
400 <u>Purchased Property Services</u>	
430 Repairs and Maintenance Services	2,136.50
440 Rentals	12,885.71
Total Purchased Property Services	\$15,022.21
500 <u>Other Purchased Services</u>	
510 Student Transportation Services	7,752.25
530 Communications	4,131.43
561 Tuition To Other School Districts Within the State	59,861.44
562 Tuition To Pennsylvania Charter Schools	412,358.26
564 Tuition To Career and Technology Centers	655,256.74
580 Travel	3,325.41
Total Other Purchased Services	\$1,142,685.53
600 <u>Supplies</u>	
610 General Supplies	234,760.54
630 Food	841.20
640 Books and Periodicals	20,649.60
650 Supplies & Fees – Technology Related	52,806.12
Total Supplies	\$309,057.46
700 <u>Property</u>	
736 Technology Equipment Lease	52,331.91
752 Capital Equipment – Original and Additional	10,625.00
758 Capitalized Technology Software - Original	192.38
Total Property	\$63,149.29

LEA : 108561803 Conemaugh Township Area SD

Printed 11/15/2023 3:08:50 PM

General Fund (10)

1000 Instruction	<u>Total</u>
800 <u>Other Objects</u>	
810 Dues and Fees	2,157.38
Total Other Objects	\$2,157.38
Total 1000 Instruction	\$8,931,439.24

LEA : 108561803 Conemaugh Township Area SD

Printed 11/15/2023 3:08:50 PM

General Fund (10)

1100 Regular Programs – Elementary / Secondary

	<u>Elementary</u>	<u>Secondary</u>	<u>Federal</u>	<u>Total</u>
100 Personnel Services – Salaries				
100 Personnel Services – Salaries	1,447,323.99	1,792,686.20	118,904.30	3,358,914.49
Total Personnel Services – Salaries	\$1,447,323.99	\$1,792,686.20	\$118,904.30	\$3,358,914.49
200 Personnel Services – Employee Benefits				
210 Group Insurance – Contracted Provider	332,179.69	407,856.48	33,165.86	773,202.03
220 Social Security Contributions	109,059.54	136,125.23	6,711.03	251,895.80
230 PSERS Retirement Contributions	533,544.77	628,187.18	22,967.73	1,184,699.68
260 Workers' Compensation	3,556.42	4,699.06	399.84	8,655.32
292 Health Savings Accounts	24,995.00	32,550.00		57,545.00
299 All Other Employee Benefits	13,290.00	11,405.00		24,695.00
Total Personnel Services – Employee Benefits	\$1,016,625.42	\$1,220,822.95	\$63,244.46	\$2,300,692.83
300 Purchased Professional and Technical Services				
322 Professional Educational Services – Ius	2,250.00	2,550.00	42,700.24	47,500.24
323 Professional Educational Services – Other Educational Agencies		32,375.00		32,375.00
329 Professional Educational Services – Other	80,555.20	82,259.43		162,814.63
340 Technical Services		15,714.50		15,714.50
Total Purchased Professional and Technical Services	\$82,805.20	\$132,898.93	\$42,700.24	\$258,404.37
400 Purchased Property Services				
430 Repairs and Maintenance Services	995.00	1,141.50		2,136.50
440 Rentals	6,637.41	6,248.30		12,885.71
Total Purchased Property Services	\$7,632.41	\$7,389.80		\$15,022.21
500 Other Purchased Services				
510 Student Transportation Services	545.00	1,135.00		1,680.00
530 Communications	2,065.71	2,065.72		4,131.43
562 Tuition To Pennsylvania Charter Schools	106,695.23	155,845.23		262,540.46
580 Travel	1,872.29	606.46		2,478.75
Total Other Purchased Services	\$111,178.23	\$159,652.41		\$270,830.64
600 Supplies				
610 General Supplies	70,914.03	85,551.86	49,980.00	206,445.89
640 Books and Periodicals	4,791.49	14,179.95		18,971.44
650 Supplies & Fees – Technology Related	4,002.21	16,099.83	27,630.08	47,732.12
Total Supplies	\$79,707.73	\$115,831.64	\$77,610.08	\$273,149.45
700 Property				
736 Technology Equipment Lease	6,507.76	45,824.15		52,331.91
752 Capital Equipment – Original and Additional		4,080.00		4,080.00
758 Capitalized Technology Software - Original		192.38		192.38
Total Property	\$6,507.76	\$50,096.53		\$56,604.29
800 Other Objects				
810 Dues and Fees		224.00		224.00
Total Other Objects		\$224.00		\$224.00
Total 1100 Regular Programs – Elementary / Secondary	\$2,751,780.74	\$3,479,602.46	\$302,459.08	\$6,533,842.28

General Fund (10)

1110 Regular Programs

	<u>Elementary</u>	<u>Secondary</u>	<u>Federal</u>	<u>Total</u>
100 Personnel Services – Salaries				
100 Personnel Services – Salaries	1,447,323.99	1,792,686.20		3,240,010.19
Total Personnel Services – Salaries	\$1,447,323.99	\$1,792,686.20		\$3,240,010.19
200 Personnel Services – Employee Benefits				
210 Group Insurance – Contracted Provider	332,179.69	407,856.48		740,036.17
220 Social Security Contributions	109,059.54	136,125.23		245,184.77
230 PSERS Retirement Contributions	533,544.77	628,187.18		1,161,731.95
260 Workers' Compensation	3,556.42	4,699.06		8,255.48
292 Health Savings Accounts	24,995.00	32,550.00		57,545.00
299 All Other Employee Benefits	13,290.00	11,405.00		24,695.00
Total Personnel Services – Employee Benefits	\$1,016,625.42	\$1,220,822.95		\$2,237,448.37
300 Purchased Professional and Technical Services				
322 Professional Educational Services – Ius	2,250.00	2,550.00	42,700.24	47,500.24
323 Professional Educational Services – Other Educational Agencies		32,375.00		32,375.00
329 Professional Educational Services – Other	80,555.20	82,259.43		162,814.63
340 Technical Services		15,714.50		15,714.50
Total Purchased Professional and Technical Services	\$82,805.20	\$132,898.93	\$42,700.24	\$258,404.37
400 Purchased Property Services				
430 Repairs and Maintenance Services	995.00	1,141.50		2,136.50
440 Rentals	6,637.41	6,248.30		12,885.71
Total Purchased Property Services	\$7,632.41	\$7,389.80		\$15,022.21
500 Other Purchased Services				
510 Student Transportation Services	545.00	1,135.00		1,680.00
530 Communications	2,065.71	2,065.72		4,131.43
562 Tuition To Pennsylvania Charter Schools	106,695.23	155,845.23		262,540.46
580 Travel	1,872.29	606.46		2,478.75
Total Other Purchased Services	\$111,178.23	\$159,652.41		\$270,830.64
600 Supplies				
610 General Supplies	70,914.03	85,551.86	49,980.00	206,445.89
640 Books and Periodicals	4,791.49	14,179.95		18,971.44
650 Supplies & Fees – Technology Related	4,002.21	16,099.83	27,630.08	47,732.12
Total Supplies	\$79,707.73	\$115,831.64	\$77,610.08	\$273,149.45
700 Property				
736 Technology Equipment Lease	6,507.76	45,824.15		52,331.91
752 Capital Equipment – Original and Additional		4,080.00		4,080.00
758 Capitalized Technology Software - Original		192.38		192.38
Total Property	\$6,507.76	\$50,096.53		\$56,604.29
800 Other Objects				
810 Dues and Fees		224.00		224.00
Total Other Objects		\$224.00		\$224.00
Total 1110 Regular Programs	\$2,751,780.74	\$3,479,602.46	\$120,310.32	\$6,351,693.52

General Fund (10)

1190 Federally-Funded Regular Programs

Elementary

Secondary

Federal

Total

100 Personnel Services – Salaries

100 Personnel Services – Salaries

118,904.30

118,904.30

Total Personnel Services – Salaries

\$118,904.30

\$118,904.30

200 Personnel Services – Employee Benefits

210 Group Insurance – Contracted Provider

33,165.86

33,165.86

220 Social Security Contributions

6,711.03

6,711.03

230 PSERS Retirement Contributions

22,967.73

22,967.73

260 Workers' Compensation

399.84

399.84

Total Personnel Services – Employee Benefits

\$63,244.46

\$63,244.46

Total 1190 Federally-Funded Regular Programs

\$182,148.76

\$182,148.76

General Fund (10)

	<u>Elementary</u>	<u>Secondary</u>	<u>Federal</u>	<u>Total</u>
1200 Special Programs – Elementary / Secondary				
100 Personnel Services – Salaries				
100 Personnel Services – Salaries	313,996.72	269,764.62	91,507.58	675,268.92
Total Personnel Services – Salaries	\$313,996.72	\$269,764.62	\$91,507.58	\$675,268.92
200 Personnel Services – Employee Benefits				
210 Group Insurance – Contracted Provider	57,286.25	49,017.57	22,715.84	129,019.66
220 Social Security Contributions	23,631.87	20,442.26	3,442.71	47,516.84
230 PSERS Retirement Contributions	104,861.03	92,150.03	16,132.78	213,143.84
260 Workers' Compensation	1,035.55	890.52	301.65	2,227.72
292 Health Savings Accounts	4,662.00	3,255.00		7,917.00
Total Personnel Services – Employee Benefits	\$191,476.70	\$165,755.38	\$42,592.98	\$399,825.06
300 Purchased Professional and Technical Services				
322 Professional Educational Services – lus	30,202.68	29,794.65		59,997.33
323 Professional Educational Services – Other Educational Agencies	69,280.00	25,140.06		94,420.06
329 Professional Educational Services – Other	72,129.89	77,595.83		149,725.72
330 Other Professional Services	6,469.59	6,734.59	15,303.57	28,507.75
Total Purchased Professional and Technical Services	\$178,082.16	\$139,265.13	\$15,303.57	\$332,650.86
500 Other Purchased Services				
510 Student Transportation Services	1,084.00	4,570.00		5,654.00
561 Tuition To Other School Districts Within the State	630.00	59,231.44		59,861.44
562 Tuition To Pennsylvania Charter Schools	22,535.00	127,282.80		149,817.80
580 Travel	56.33	498.04		554.37
Total Other Purchased Services	\$24,305.33	\$191,582.28		\$215,887.61
600 Supplies				
610 General Supplies	17,212.61	6,421.36	3,284.04	26,918.01
640 Books and Periodicals		1,589.16		1,589.16
650 Supplies & Fees – Technology Related	2,537.00	2,537.00		5,074.00
Total Supplies	\$19,749.61	\$10,547.52	\$3,284.04	\$33,581.17
700 Property				
752 Capital Equipment – Original and Additional	6,545.00			6,545.00
Total Property	\$6,545.00			\$6,545.00
800 Other Objects				
810 Dues and Fees	503.75	1,429.63		1,933.38
Total Other Objects	\$503.75	\$1,429.63		\$1,933.38
Total 1200 Special Programs – Elementary / Secondary	\$734,659.27	\$778,344.56	\$152,688.17	\$1,665,692.00

General Fund (10)

1210 Life Skills Support

	<u>Elementary</u>	<u>Secondary</u>	<u>Federal</u>	<u>Total</u>
100 Personnel Services – Salaries				
100 Personnel Services – Salaries	33,168.10	22,667.86	30,910.80	86,746.76
Total Personnel Services – Salaries	\$33,168.10	\$22,667.86	\$30,910.80	\$86,746.76
200 Personnel Services – Employee Benefits				
210 Group Insurance – Contracted Provider	10,036.39	8,210.32	5,144.79	23,391.50
220 Social Security Contributions	2,478.06	1,703.41	1,173.19	5,354.66
230 PSERS Retirement Contributions	11,695.05	7,992.72	5,449.57	25,137.34
260 Workers' Compensation	109.46	74.71	101.85	286.02
Total Personnel Services – Employee Benefits	\$24,318.96	\$17,981.16	\$11,869.40	\$54,169.52
300 Purchased Professional and Technical Services				
323 Professional Educational Services – Other Educational Agencies		2,580.00		2,580.00
329 Professional Educational Services – Other	16,341.77	28,583.27		44,925.04
Total Purchased Professional and Technical Services	\$16,341.77	\$31,163.27		\$47,505.04
600 Supplies				
610 General Supplies	519.17	4,542.70		5,061.87
640 Books and Periodicals		951.35		951.35
Total Supplies	\$519.17	\$5,494.05		\$6,013.22
700 Property				
752 Capital Equipment – Original and Additional	6,545.00			6,545.00
Total Property	\$6,545.00			\$6,545.00
800 Other Objects				
810 Dues and Fees		550.00		550.00
Total Other Objects		\$550.00		\$550.00
Total 1210 Life Skills Support	\$80,893.00	\$77,856.34	\$42,780.20	\$201,529.54

General Fund (10)

1220 Sensory Support

	<u>Elementary</u>	<u>Secondary</u>	<u>Federal</u>	<u>Total</u>
100 Personnel Services – Salaries				
100 Personnel Services – Salaries	56,613.62	13,626.90		70,240.52
Total Personnel Services – Salaries	\$56,613.62	\$13,626.90		\$70,240.52
200 Personnel Services – Employee Benefits				
210 Group Insurance – Contracted Provider	5,496.00	1,588.68		7,084.68
220 Social Security Contributions	4,323.68	1,040.06		5,363.74
230 PSERS Retirement Contributions	14,357.81	3,141.61		17,499.42
260 Workers' Compensation	186.94	44.98		231.92
292 Health Savings Accounts	525.00	175.00		700.00
Total Personnel Services – Employee Benefits	\$24,889.43	\$5,990.33		\$30,879.76
300 Purchased Professional and Technical Services				
322 Professional Educational Services – lus	20,508.37	29,794.65		50,303.02
Total Purchased Professional and Technical Services	\$20,508.37	\$29,794.65		\$50,303.02
600 Supplies				
610 General Supplies	307.00			307.00
Total Supplies	\$307.00			\$307.00
800 Other Objects				
810 Dues and Fees		279.00		279.00
Total Other Objects		\$279.00		\$279.00
Total 1220 Sensory Support	\$102,318.42	\$49,690.88		\$152,009.30

General Fund (10)

1230 Emotional Support

	<u>Elementary</u>	<u>Secondary</u>	<u>Federal</u>	<u>Total</u>
100 Personnel Services – Salaries				
100 Personnel Services – Salaries	73,876.08	84,233.67	26,940.45	185,050.20
Total Personnel Services – Salaries	\$73,876.08	\$84,233.67	\$26,940.45	\$185,050.20
200 Personnel Services – Employee Benefits				
210 Group Insurance – Contracted Provider	15,052.74	14,432.02	6,792.80	36,277.56
220 Social Security Contributions	5,542.21	6,401.10	1,014.17	12,957.48
230 PSERS Retirement Contributions	26,019.30	29,700.87	4,749.66	60,469.83
260 Workers' Compensation	243.65	278.04	88.80	610.49
292 Health Savings Accounts	1,575.00	1,239.00		2,814.00
Total Personnel Services – Employee Benefits	\$48,432.90	\$52,051.03	\$12,645.43	\$113,129.36
300 Purchased Professional and Technical Services				
323 Professional Educational Services – Other Educational Agencies	69,280.00	22,560.06		91,840.06
329 Professional Educational Services – Other	11,543.37			11,543.37
Total Purchased Professional and Technical Services	\$80,823.37	\$22,560.06		\$103,383.43
500 Other Purchased Services				
561 Tuition To Other School Districts Within the State	630.00	59,231.44		59,861.44
Total Other Purchased Services	\$630.00	\$59,231.44		\$59,861.44
Total 1230 Emotional Support	\$203,762.35	\$218,076.20	\$39,585.88	\$461,424.43

LEA : 108561803 Conemaugh Township Area SD

Printed 11/15/2023 3:08:50 PM

General Fund (10)

1240 Academic Support

	<u>Elementary</u>	<u>Secondary</u>	<u>Federal</u>	<u>Total</u>
100 Personnel Services – Salaries				
100 Personnel Services – Salaries	133,755.08	136,555.76	16,364.78	286,675.62
Total Personnel Services – Salaries	\$133,755.08	\$136,555.76	\$16,364.78	\$286,675.62
200 Personnel Services – Employee Benefits				
210 Group Insurance – Contracted Provider	23,118.33	21,033.95	6,504.61	50,656.89
220 Social Security Contributions	10,049.24	10,348.57	608.25	21,006.06
230 PSERS Retirement Contributions	46,941.47	46,843.77	2,885.10	96,670.34
260 Workers' Compensation	440.90	450.99	54.00	945.89
292 Health Savings Accounts	2,562.00	1,841.00		4,403.00
Total Personnel Services – Employee Benefits	\$83,111.94	\$80,518.28	\$10,051.96	\$173,682.18
300 Purchased Professional and Technical Services				
329 Professional Educational Services – Other	44,244.75	39,454.50		83,699.25
330 Other Professional Services	6,469.59	6,734.59	15,303.57	28,507.75
Total Purchased Professional and Technical Services	\$50,714.34	\$46,189.09	\$15,303.57	\$112,207.00
500 Other Purchased Services				
510 Student Transportation Services	1,084.00	4,570.00		5,654.00
562 Tuition To Pennsylvania Charter Schools	22,535.00	127,282.80		149,817.80
580 Travel	56.33	498.04		554.37
Total Other Purchased Services	\$23,675.33	\$132,350.84		\$156,026.17
600 Supplies				
610 General Supplies	16,386.44	1,878.66	3,284.04	21,549.14
640 Books and Periodicals		637.81		637.81
650 Supplies & Fees – Technology Related	2,537.00	2,537.00		5,074.00
Total Supplies	\$18,923.44	\$5,053.47	\$3,284.04	\$27,260.95
800 Other Objects				
810 Dues and Fees	503.75	600.63		1,104.38
Total Other Objects	\$503.75	\$600.63		\$1,104.38
Total 1240 Academic Support	\$310,683.88	\$401,268.07	\$45,004.35	\$756,956.30

LEA : 108561803 Conemaugh Township Area SD

Printed 11/15/2023 3:08:50 PM

General Fund (10)

	<u>Elementary</u>	<u>Secondary</u>	<u>Federal</u>	<u>Total</u>
1241 Learning Support – Public				
100 Personnel Services – Salaries				
100 Personnel Services – Salaries	128,044.24	122,417.96	16,364.78	266,826.98
Total Personnel Services – Salaries	\$128,044.24	\$122,417.96	\$16,364.78	\$266,826.98
200 Personnel Services – Employee Benefits				
210 Group Insurance – Contracted Provider	21,213.20	16,971.18	6,504.61	44,688.99
220 Social Security Contributions	9,645.82	9,311.11	608.25	19,565.18
230 PSERS Retirement Contributions	44,963.24	41,858.75	2,885.10	89,707.09
260 Workers' Compensation	422.44	404.19	54.00	880.63
292 Health Savings Accounts	2,387.00	1,491.00		3,878.00
Total Personnel Services – Employee Benefits	\$78,631.70	\$70,036.23	\$10,051.96	\$158,719.89
300 Purchased Professional and Technical Services				
329 Professional Educational Services – Other	44,244.75	39,454.50		83,699.25
330 Other Professional Services	6,469.59	6,734.59	15,303.57	28,507.75
Total Purchased Professional and Technical Services	\$50,714.34	\$46,189.09	\$15,303.57	\$112,207.00
500 Other Purchased Services				
510 Student Transportation Services	1,084.00	4,570.00		5,654.00
562 Tuition To Pennsylvania Charter Schools	22,535.00	127,282.80		149,817.80
580 Travel	56.33	110.04		166.37
Total Other Purchased Services	\$23,675.33	\$131,962.84		\$155,638.17
600 Supplies				
610 General Supplies	15,352.60	1,878.66	3,284.04	20,515.30
640 Books and Periodicals		637.81		637.81
650 Supplies & Fees – Technology Related	2,537.00	2,537.00		5,074.00
Total Supplies	\$17,889.60	\$5,053.47	\$3,284.04	\$26,227.11
800 Other Objects				
810 Dues and Fees	179.75	276.63		456.38
Total Other Objects	\$179.75	\$276.63		\$456.38
Total 1241 Learning Support – Public	\$299,134.96	\$375,936.22	\$45,004.35	\$720,075.53

General Fund (10)

1243 Gifted Support

	<u>Elementary</u>	<u>Secondary</u>	<u>Federal</u>	<u>Total</u>
100 Personnel Services – Salaries				
100 Personnel Services – Salaries	5,710.84	14,137.80		19,848.64
Total Personnel Services – Salaries	\$5,710.84	\$14,137.80		\$19,848.64
200 Personnel Services – Employee Benefits				
210 Group Insurance – Contracted Provider	1,905.13	4,062.77		5,967.90
220 Social Security Contributions	403.42	1,037.46		1,440.88
230 PSERS Retirement Contributions	1,978.23	4,985.02		6,963.25
260 Workers' Compensation	18.46	46.80		65.26
292 Health Savings Accounts	175.00	350.00		525.00
Total Personnel Services – Employee Benefits	\$4,480.24	\$10,482.05		\$14,962.29
500 Other Purchased Services				
580 Travel		388.00		388.00
Total Other Purchased Services		\$388.00		\$388.00
600 Supplies				
610 General Supplies	1,033.84			1,033.84
Total Supplies	\$1,033.84			\$1,033.84
800 Other Objects				
810 Dues and Fees	324.00	324.00		648.00
Total Other Objects	\$324.00	\$324.00		\$648.00
Total 1243 Gifted Support	\$11,548.92	\$25,331.85		\$36,880.77

General Fund (10)

	<u>Elementary</u>	<u>Secondary</u>	<u>Federal</u>	<u>Total</u>
1270 Multi-Handicapped Support				
100 Personnel Services – Salaries				
100 Personnel Services – Salaries	16,583.84	12,680.43	17,291.55	46,555.82
Total Personnel Services – Salaries	\$16,583.84	\$12,680.43	\$17,291.55	\$46,555.82
200 Personnel Services – Employee Benefits				
210 Group Insurance – Contracted Provider	3,582.79	3,752.60	4,273.64	11,609.03
220 Social Security Contributions	1,238.68	949.12	647.10	2,834.90
230 PSERS Retirement Contributions	5,847.40	4,471.06	3,048.45	13,366.91
260 Workers' Compensation	54.60	41.80	57.00	153.40
Total Personnel Services – Employee Benefits	\$10,723.47	\$9,214.58	\$8,026.19	\$27,964.24
300 Purchased Professional and Technical Services				
329 Professional Educational Services – Other		9,558.06		9,558.06
Total Purchased Professional and Technical Services		\$9,558.06		\$9,558.06
Total 1270 Multi-Handicapped Support	\$27,307.31	\$31,453.07	\$25,317.74	\$84,078.12

General Fund (10)

1280 Early Intervention Support

300 Purchased Professional and Technical Services

322 Professional Educational Services – lus

Total Purchased Professional and Technical Services

Total 1280 Early Intervention Support

Elementary

Secondary

Federal

Total

9,694.31

9,694.31

\$9,694.31

\$9,694.31

\$9,694.31

\$9,694.31

LEA : 108561803 Conemaugh Township Area SD

Printed 11/15/2023 3:08:50 PM

General Fund (10)

1300 Vocational Education

Elementary

Secondary

Federal

Total

500 Other Purchased Services

564 Tuition To Career and Technology Centers

655,256.74

655,256.74

Total Other Purchased Services

\$655,256.74

\$655,256.74

600 Supplies

630 Food

841.20

841.20

Total Supplies

\$841.20

\$841.20

Total 1300 Vocational Education

\$656,097.94

\$656,097.94

General Fund (10)

	<u>Elementary</u>	<u>Secondary</u>	<u>Federal</u>	<u>Total</u>
1400 Other Instructional Programs – Elementary / Secondary				
100 Personnel Services – Salaries				
100 Personnel Services – Salaries	4,209.87	11,430.91	12,653.41	28,294.19
Total Personnel Services – Salaries	\$4,209.87	\$11,430.91	\$12,653.41	\$28,294.19
200 Personnel Services – Employee Benefits				
210 Group Insurance – Contracted Provider	12.88			12.88
220 Social Security Contributions	257.42	865.79	973.58	2,096.79
230 PSERS Retirement Contributions	3,572.66	4,030.52	1,561.19	9,164.37
260 Workers' Compensation	17.21	37.72	25.26	80.19
Total Personnel Services – Employee Benefits	\$3,860.17	\$4,934.03	\$2,560.03	\$11,354.23
300 Purchased Professional and Technical Services				
323 Professional Educational Services – Other Educational Agencies		4,122.58		4,122.58
329 Professional Educational Services – Other		24,349.08		24,349.08
Total Purchased Professional and Technical Services		\$28,471.66		\$28,471.66
Total 1400 Other Instructional Programs – Elementary / Secondary	\$8,070.04	\$44,836.60	\$15,213.44	\$68,120.08

General Fund (10)

	<u>Elementary</u>	<u>Secondary</u>	<u>Federal</u>	<u>Total</u>
1420 Summer School				
100 Personnel Services – Salaries				
100 Personnel Services – Salaries	1,442.11		9,024.05	10,466.16
Total Personnel Services – Salaries	\$1,442.11		\$9,024.05	\$10,466.16
200 Personnel Services – Employee Benefits				
210 Group Insurance – Contracted Provider	12.88			12.88
220 Social Security Contributions	106.38		715.62	822.00
230 PSERS Retirement Contributions	1,549.86		1,561.19	3,111.05
260 Workers' Compensation	4.77		25.26	30.03
Total Personnel Services – Employee Benefits	\$1,673.89		\$2,302.07	\$3,975.96
Total 1420 Summer School	\$3,116.00		\$11,326.12	\$14,442.12

General Fund (10)

	<u>Elementary</u>	<u>Secondary</u>	<u>Federal</u>	<u>Total</u>
1430 Homebound Instruction				
100 Personnel Services – Salaries				
100 Personnel Services – Salaries	542.30	305.91		848.21
Total Personnel Services – Salaries	\$542.30	\$305.91		\$848.21
200 Personnel Services – Employee Benefits				
220 Social Security Contributions	40.79	23.41		64.20
230 PSERS Retirement Contributions	191.22	107.86		299.08
260 Workers' Compensation	1.79	1.01		2.80
Total Personnel Services – Employee Benefits	\$233.80	\$132.28		\$366.08
Total 1430 Homebound Instruction	\$776.10	\$438.19		\$1,214.29

General Fund (10)

1440 Alternative Regular Education Programs

Elementary

Secondary

Federal

Total

300 Purchased Professional and Technical Services

323 Professional Educational Services – Other Educational Agencies

4,122.58

4,122.58

329 Professional Educational Services – Other

24,349.08

24,349.08

Total Purchased Professional and Technical Services

\$28,471.66

\$28,471.66

Total 1440 Alternative Regular Education Programs

\$28,471.66

\$28,471.66

LEA : 108561803 Conemaugh Township Area SD

Printed 11/15/2023 3:08:50 PM

General Fund (10)

1442 Alternative Education Programs

300 Purchased Professional and Technical Services

323 Professional Educational Services – Other Educational Agencies

329 Professional Educational Services – Other

Total Purchased Professional and Technical Services

Total 1442 Alternative Education Programs

Elementary

Secondary

Federal

Total

4,122.58

4,122.58

24,349.08

24,349.08

\$28,471.66

\$28,471.66

\$28,471.66

\$28,471.66

General Fund (10)

	<u>Elementary</u>	<u>Secondary</u>	<u>Federal</u>	<u>Total</u>
1450 Instructional Programs Outside the Established School Day				
100 Personnel Services – Salaries				
100 Personnel Services – Salaries	2,225.46		3,629.36	5,854.82
Total Personnel Services – Salaries	\$2,225.46		\$3,629.36	\$5,854.82
200 Personnel Services – Employee Benefits				
220 Social Security Contributions	110.25		257.96	368.21
230 PSERS Retirement Contributions	1,831.58			1,831.58
260 Workers' Compensation	10.65			10.65
Total Personnel Services – Employee Benefits	\$1,952.48		\$257.96	\$2,210.44
Total 1450 Instructional Programs Outside the Established School Day	\$4,177.94		\$3,887.32	\$8,065.26

General Fund (10)

	<u>Elementary</u>	<u>Secondary</u>	<u>Federal</u>	<u>Total</u>
1490 Additional Other Instructional Programs				
100 Personnel Services – Salaries				
100 Personnel Services – Salaries		11,125.00		11,125.00
Total Personnel Services – Salaries		\$11,125.00		\$11,125.00
200 Personnel Services – Employee Benefits				
220 Social Security Contributions		842.38		842.38
230 PSERS Retirement Contributions		3,922.66		3,922.66
260 Workers' Compensation		36.71		36.71
Total Personnel Services – Employee Benefits		\$4,801.75		\$4,801.75
Total 1490 Additional Other Instructional Programs		\$15,926.75		\$15,926.75

LEA : 108561803 Conemaugh Township Area SD

Printed 11/15/2023 3:08:50 PM

General Fund (10)

1500 Nonpublic School Programs

300 Purchased Professional and Technical Services

	<u>Elementary</u>	<u>Secondary</u>	<u>Federal</u>	<u>Total</u>
329 Professional Educational Services – Other			1,771.05	1,771.05
390 Other Purchased Professional and Technical Services			3,419.71	3,719.71

Total Purchased Professional and Technical Services			\$5,190.76	\$5,490.76
------------------------------------------------------------	--	--	-------------------	-------------------

500 Other Purchased Services

510 Student Transportation Services			418.25	418.25
580 Travel			292.29	292.29

Total Other Purchased Services			\$710.54	\$710.54
---------------------------------------	--	--	-----------------	-----------------

600 Supplies

610 General Supplies			1,396.64	1,396.64
640 Books and Periodicals				89.00

Total Supplies			\$1,396.64	\$1,485.64
-----------------------	--	--	-------------------	-------------------

Total 1500 Nonpublic School Programs			\$7,297.94	\$7,686.94
---------------------------------------------	--	--	-------------------	-------------------

General Fund (10)

2000 Support Services

Total

100 Personnel Services – Salaries

100 Personnel Services – Salaries 1,951,358.47

Total Personnel Services – Salaries \$1,951,358.47

200 Personnel Services – Employee Benefits

210 Group Insurance – Contracted Provider 417,179.19

220 Social Security Contributions 146,536.09

230 PSERS Retirement Contributions 667,307.90

260 Workers’ Compensation 6,437.02

292 Health Savings Accounts 38,694.68

299 All Other Employee Benefits 8,840.00

Total Personnel Services – Employee Benefits \$1,284,994.88

300 Purchased Professional and Technical Services

322 Professional Educational Services – Ius 80.00

329 Professional Educational Services – Other 73,736.24

330 Other Professional Services 272,400.33

340 Technical Services 106,180.65

360 Employee Training and Development Services 5,159.00

390 Other Purchased Professional and Technical Services 1,381.00

Total Purchased Professional and Technical Services \$458,937.22

400 Purchased Property Services

410 Cleaning Services 11,090.00

420 Utility Services 134,357.26

430 Repairs and Maintenance Services 56,200.16

440 Rentals 5,065.45

Total Purchased Property Services \$206,712.87

500 Other Purchased Services

513 Contracted Carriers 799,840.78

516 Student Transportation Services From the IU 508.33

520 Insurance – General 19,783.58

523 General Property and Liability Insurance 58,676.00

530 Communications 37,836.48

549 Other Advertising/Public Relations 10,531.54

580 Travel 10,329.45

595 IU Payments By Withholding 2,764.91

Total Other Purchased Services \$940,271.07

600 Supplies

610 General Supplies 272,428.27

620 Energy 90,267.82

630 Food 1,831.50

640 Books and Periodicals 17,544.07

650 Supplies & Fees – Technology Related 64,800.13

Total Supplies \$446,871.79

General Fund (10)

2000 Support Services

800 Other Objects

810 Dues and Fees

Total

34,857.14

Total Other Objects

\$34,857.14

Total 2000 Support Services

\$5,324,003.44

LEA : 108561803 Conemaugh Township Area SD

Printed 11/15/2023 3:08:55 PM

General Fund (10)

	<u>Elementary</u>	<u>Secondary</u>	<u>Federal</u>	<u>Total</u>
2100 Support Services – Students				
100 Personnel Services – Salaries				
100 Personnel Services – Salaries	108,899.13	174,483.28		283,382.41
Total Personnel Services – Salaries	\$108,899.13	\$174,483.28		\$283,382.41
200 Personnel Services – Employee Benefits				
210 Group Insurance – Contracted Provider	25,685.98	56,642.84		82,328.82
220 Social Security Contributions	8,052.80	12,931.84		20,984.64
230 PSERS Retirement Contributions	38,397.79	61,522.83		99,920.62
260 Workers' Compensation	359.43	575.94		935.37
292 Health Savings Accounts	2,100.00	6,300.00		8,400.00
Total Personnel Services – Employee Benefits	\$74,596.00	\$137,973.45		\$212,569.45
300 Purchased Professional and Technical Services				
329 Professional Educational Services – Other	1,659.29	1,161.00	65,750.00	68,570.29
330 Other Professional Services			21,573.00	56,250.00
Total Purchased Professional and Technical Services	\$1,659.29	\$1,161.00	\$87,323.00	\$124,820.29
500 Other Purchased Services				
530 Communications	259.95	259.94		519.89
580 Travel	120.92	170.92		291.84
Total Other Purchased Services	\$380.87	\$430.86		\$811.73
600 Supplies				
610 General Supplies	262.19	5,585.16	743.81	7,231.33
650 Supplies & Fees – Technology Related	2,000.00			2,000.00
Total Supplies	\$2,262.19	\$5,585.16	\$743.81	\$9,231.33
800 Other Objects				
810 Dues and Fees		786.00		786.00
Total Other Objects		\$786.00		\$786.00
Total 2100 Support Services – Students	\$187,797.48	\$320,419.75	\$88,066.81	\$631,601.21

General Fund (10)

2120 Guidance Services

	<u>Elementary</u>	<u>Secondary</u>	<u>Federal</u>	<u>Total</u>
100 Personnel Services – Salaries				
100 Personnel Services – Salaries	63,129.63	128,713.78		191,843.41
Total Personnel Services – Salaries	\$63,129.63	\$128,713.78		\$191,843.41
200 Personnel Services – Employee Benefits				
210 Group Insurance – Contracted Provider	17,990.52	48,947.38		66,937.90
220 Social Security Contributions	4,667.21	9,546.25		14,213.46
230 PSERS Retirement Contributions	22,259.45	45,384.50		67,643.95
260 Workers' Compensation	208.37	424.88		633.25
292 Health Savings Accounts	1,400.00	5,600.00		7,000.00
Total Personnel Services – Employee Benefits	\$46,525.55	\$109,903.01		\$156,428.56
300 Purchased Professional and Technical Services				
329 Professional Educational Services – Other	1,659.29	1,161.00		2,820.29
Total Purchased Professional and Technical Services	\$1,659.29	\$1,161.00		\$2,820.29
500 Other Purchased Services				
580 Travel	12.50	62.50		75.00
Total Other Purchased Services	\$12.50	\$62.50		\$75.00
600 Supplies				
610 General Supplies	152.19	5,475.16		5,627.35
650 Supplies & Fees – Technology Related	2,000.00			2,000.00
Total Supplies	\$2,152.19	\$5,475.16		\$7,627.35
800 Other Objects				
810 Dues and Fees		786.00		786.00
Total Other Objects		\$786.00		\$786.00
Total 2120 Guidance Services	\$113,479.16	\$246,101.45		\$359,580.61

LEA : 108561803 Conemaugh Township Area SD

Printed 11/15/2023 3:08:55 PM

General Fund (10)

	<u>Elementary</u>	<u>Secondary</u>	<u>Federal</u>	<u>Total</u>
2140 Psychological Services				
100 Personnel Services – Salaries				
100 Personnel Services – Salaries	45,769.50	45,769.50		91,539.00
Total Personnel Services – Salaries	\$45,769.50	\$45,769.50		\$91,539.00
200 Personnel Services – Employee Benefits				
210 Group Insurance – Contracted Provider	7,695.46	7,695.46		15,390.92
220 Social Security Contributions	3,385.59	3,385.59		6,771.18
230 PSERS Retirement Contributions	16,138.34	16,138.33		32,276.67
260 Workers' Compensation	151.06	151.06		302.12
292 Health Savings Accounts	700.00	700.00		1,400.00
Total Personnel Services – Employee Benefits	\$28,070.45	\$28,070.44		\$56,140.89
300 Purchased Professional and Technical Services				
329 Professional Educational Services – Other			9,500.00	9,500.00
Total Purchased Professional and Technical Services			\$9,500.00	\$9,500.00
500 Other Purchased Services				
530 Communications	259.95	259.94		519.89
580 Travel	108.42	108.42		216.84
Total Other Purchased Services	\$368.37	\$368.36		\$736.73
600 Supplies				
610 General Supplies	110.00	110.00		220.00
Total Supplies	\$110.00	\$110.00		\$220.00
Total 2140 Psychological Services	\$74,318.32	\$74,318.30	\$9,500.00	\$158,136.62

LEA : 108561803 Conemaugh Township Area SD

Printed 11/15/2023 3:08:55 PM

General Fund (10)

2160 Social Work Services

Elementary

Secondary

Federal

Total

300 Purchased Professional and Technical Services

329 Professional Educational Services – Other

56,250.00

56,250.00

330 Other Professional Services

21,573.00

56,250.00

Total Purchased Professional and Technical Services

\$77,823.00

\$112,500.00

600 Supplies

610 General Supplies

743.81

1,383.98

Total Supplies

\$743.81

\$1,383.98

Total 2160 Social Work Services

\$78,566.81

\$113,883.98

General Fund (10)

	<u>Elementary</u>	<u>Secondary</u>	<u>Federal</u>	<u>Total</u>
2200 Support Services – Instructional Staff				
100 Personnel Services – Salaries				
100 Personnel Services – Salaries	106,370.13	113,729.50		220,099.63
Total Personnel Services – Salaries	\$106,370.13	\$113,729.50		\$220,099.63
200 Personnel Services – Employee Benefits				
210 Group Insurance – Contracted Provider	26,988.97	26,989.05		53,978.02
220 Social Security Contributions	8,188.81	8,624.58		16,813.39
230 PSERS Retirement Contributions	37,280.52	40,101.13		77,381.65
260 Workers' Compensation	350.93	375.31		726.24
292 Health Savings Accounts	2,100.00	2,100.00		4,200.00
Total Personnel Services – Employee Benefits	\$74,909.23	\$78,190.07		\$153,099.30
300 Purchased Professional and Technical Services				
322 Professional Educational Services – lus	80.00			80.00
329 Professional Educational Services – Other	462.50	462.50		925.00
340 Technical Services	989.74	989.74		1,979.48
360 Employee Training and Development Services	2,879.00	2,280.00		5,159.00
Total Purchased Professional and Technical Services	\$4,411.24	\$3,732.24		\$8,143.48
500 Other Purchased Services				
580 Travel		63.52		63.52
Total Other Purchased Services		\$63.52		\$63.52
600 Supplies				
610 General Supplies	931.62	437.09		1,368.71
640 Books and Periodicals	6,063.59	6,189.32		12,252.91
650 Supplies & Fees – Technology Related	1,820.79	5,245.97		7,066.76
Total Supplies	\$8,816.00	\$11,872.38		\$20,688.38
800 Other Objects				
810 Dues and Fees	250.00	622.00		872.00
Total Other Objects	\$250.00	\$622.00		\$872.00
Total 2200 Support Services – Instructional Staff	\$194,756.60	\$208,209.71		\$402,966.31

General Fund (10)

	<u>Elementary</u>	<u>Secondary</u>	<u>Federal</u>	<u>Total</u>
2250 School Library Services				
100 Personnel Services – Salaries				
100 Personnel Services – Salaries	58,412.00	66,411.00		124,823.00
Total Personnel Services – Salaries	\$58,412.00	\$66,411.00		\$124,823.00
200 Personnel Services – Employee Benefits				
210 Group Insurance – Contracted Provider	17,681.66	17,730.58		35,412.24
220 Social Security Contributions	4,419.10	5,080.40		9,499.50
230 PSERS Retirement Contributions	20,596.02	23,416.63		44,012.65
260 Workers' Compensation	192.68	219.18		411.86
292 Health Savings Accounts	1,400.00	1,400.00		2,800.00
Total Personnel Services – Employee Benefits	\$44,289.46	\$47,846.79		\$92,136.25
300 Purchased Professional and Technical Services				
340 Technical Services	989.74	989.74		1,979.48
Total Purchased Professional and Technical Services	\$989.74	\$989.74		\$1,979.48
600 Supplies				
610 General Supplies	748.49	253.96		1,002.45
640 Books and Periodicals	4,998.89	6,144.32		11,143.21
650 Supplies & Fees – Technology Related	1,820.79	5,245.97		7,066.76
Total Supplies	\$7,568.17	\$11,644.25		\$19,212.42
800 Other Objects				
810 Dues and Fees		372.00		372.00
Total Other Objects		\$372.00		\$372.00
Total 2250 School Library Services	\$111,259.37	\$127,263.78		\$238,523.15

General Fund (10)

	<u>Elementary</u>	<u>Secondary</u>	<u>Federal</u>	<u>Total</u>
2260 Instruction and Curriculum Development Services				
100 Personnel Services – Salaries				
100 Personnel Services – Salaries	47,208.13	46,568.50		93,776.63
Total Personnel Services – Salaries	\$47,208.13	\$46,568.50		\$93,776.63
200 Personnel Services – Employee Benefits				
210 Group Insurance – Contracted Provider	9,307.31	9,258.47		18,565.78
220 Social Security Contributions	3,713.04	3,487.51		7,200.55
230 PSERS Retirement Contributions	16,420.05	16,420.05		32,840.10
260 Workers' Compensation	155.77	153.66		309.43
292 Health Savings Accounts	700.00	700.00		1,400.00
Total Personnel Services – Employee Benefits	\$30,296.17	\$30,019.69		\$60,315.86
300 Purchased Professional and Technical Services				
329 Professional Educational Services – Other	462.50	462.50		925.00
Total Purchased Professional and Technical Services	\$462.50	\$462.50		\$925.00
600 Supplies				
610 General Supplies	183.13	183.13		366.26
640 Books and Periodicals	45.00	45.00		90.00
Total Supplies	\$228.13	\$228.13		\$456.26
800 Other Objects				
810 Dues and Fees	75.00	75.00		150.00
Total Other Objects	\$75.00	\$75.00		\$150.00
Total 2260 Instruction and Curriculum Development Services	\$78,269.93	\$77,353.82		\$155,623.75

General Fund (10)

	<u>Elementary</u>	<u>Secondary</u>	<u>Federal</u>	<u>Total</u>
2270 Instructional Staff Professional Development Services				
300 <u>Purchased Professional and Technical Services</u>				
322 Professional Educational Services – Ius	80.00			80.00
360 Employee Training and Development Services	2,879.00	2,280.00		5,159.00
Total Purchased Professional and Technical Services	\$2,959.00	\$2,280.00		\$5,239.00
500 <u>Other Purchased Services</u>				
580 Travel		63.52		63.52
Total Other Purchased Services		\$63.52		\$63.52
600 <u>Supplies</u>				
640 Books and Periodicals	1,019.70			1,019.70
Total Supplies	\$1,019.70			\$1,019.70
800 <u>Other Objects</u>				
810 Dues and Fees	175.00	175.00		350.00
Total Other Objects	\$175.00	\$175.00		\$350.00
Total 2270 Instructional Staff Professional Development Services	\$4,153.70	\$2,518.52		\$6,672.22

General Fund (10)

	<u>Elementary</u>	<u>Secondary</u>	<u>Federal</u>	<u>Total</u>
2290 Other Instructional Staff Services				
100 Personnel Services – Salaries				
100 Personnel Services – Salaries	750.00	750.00		1,500.00
Total Personnel Services – Salaries	\$750.00	\$750.00		\$1,500.00
200 Personnel Services – Employee Benefits				
220 Social Security Contributions	56.67	56.67		113.34
230 PSERS Retirement Contributions	264.45	264.45		528.90
260 Workers' Compensation	2.48	2.47		4.95
Total Personnel Services – Employee Benefits	\$323.60	\$323.59		\$647.19
Total 2290 Other Instructional Staff Services	\$1,073.60	\$1,073.59		\$2,147.19

LEA : 108561803 Conemaugh Township Area SD

Printed 11/15/2023 3:08:55 PM

General Fund (10)

	<u>Elementary</u>	<u>Secondary</u>	<u>Federal</u>	<u>Total</u>
2300 Support Services – Administration				
100 Personnel Services – Salaries				
100 Personnel Services – Salaries	188,279.82	237,813.20		657,974.05
Total Personnel Services – Salaries	\$188,279.82	\$237,813.20		\$657,974.05
200 Personnel Services – Employee Benefits				
210 Group Insurance – Contracted Provider	29,286.37	67,326.28		131,846.53
220 Social Security Contributions	14,384.38	17,594.29		49,379.05
230 PSERS Retirement Contributions	65,613.41	83,801.89		217,272.55
260 Workers' Compensation	621.41	784.65		2,170.30
292 Health Savings Accounts	2,800.00	5,499.99		11,099.99
Total Personnel Services – Employee Benefits	\$112,705.57	\$175,007.10		\$411,768.42
300 Purchased Professional and Technical Services				
329 Professional Educational Services – Other				400.00
330 Other Professional Services				46,060.92
Total Purchased Professional and Technical Services				\$46,460.92
500 Other Purchased Services				
520 Insurance – General		100.00		19,783.58
530 Communications	1,018.79	1,575.93		10,846.23
549 Other Advertising/Public Relations				10,531.54
580 Travel	30.25	661.06		3,860.64
Total Other Purchased Services	\$1,049.04	\$2,336.99		\$45,021.99
600 Supplies				
610 General Supplies	10,215.58	1,427.13		13,571.36
630 Food				1,831.50
640 Books and Periodicals	2,158.76	629.40		5,291.16
650 Supplies & Fees – Technology Related				4,630.00
Total Supplies	\$12,374.34	\$2,056.53		\$25,324.02
800 Other Objects				
810 Dues and Fees	160.00	1,430.00		20,418.39
Total Other Objects	\$160.00	\$1,430.00		\$20,418.39
Total 2300 Support Services – Administration	\$314,568.77	\$418,643.82		\$1,206,967.79

General Fund (10)

2310 Board Services

Elementary Secondary Federal Total

100	<u>Personnel Services – Salaries</u>				
	100 Personnel Services – Salaries				3,547.11
Total Personnel Services – Salaries					\$3,547.11
200	<u>Personnel Services – Employee Benefits</u>				
	220 Social Security Contributions				249.34
	230 PSERS Retirement Contributions				1,160.76
	260 Workers' Compensation				10.92
Total Personnel Services – Employee Benefits					\$1,421.02
300	<u>Purchased Professional and Technical Services</u>				
	330 Other Professional Services				10,900.00
Total Purchased Professional and Technical Services					\$10,900.00
500	<u>Other Purchased Services</u>				
	520 Insurance – General				17,891.00
	549 Other Advertising/Public Relations				10,531.54
	580 Travel				8.07
Total Other Purchased Services					\$28,430.61
600	<u>Supplies</u>				
	610 General Supplies				543.74
	630 Food				1,623.50
	640 Books and Periodicals				2,170.00
Total Supplies					\$4,337.24
800	<u>Other Objects</u>				
	810 Dues and Fees				14,201.39
Total Other Objects					\$14,201.39
Total 2310 Board Services					\$62,837.37

LEA : 108561803 Conemaugh Township Area SD

Printed 11/15/2023 3:08:55 PM

General Fund (10)

2320 Board Treasurer Services

Elementary

Secondary

Federal

Total

500 Other Purchased Services

520 Insurance – General

100.00

Total Other Purchased Services

\$100.00

Total 2320 Board Treasurer Services

\$100.00

General Fund (10)

	<u>Elementary</u>	<u>Secondary</u>	<u>Federal</u>	<u>Total</u>
2330 Tax Assessment and Collection Services				
100 Personnel Services – Salaries				
100 Personnel Services – Salaries				23,361.00
Total Personnel Services – Salaries				\$23,361.00
200 Personnel Services – Employee Benefits				
220 Social Security Contributions				1,787.23
260 Workers' Compensation				76.96
Total Personnel Services – Employee Benefits				\$1,864.19
300 Purchased Professional and Technical Services				
330 Other Professional Services				27,069.92
Total Purchased Professional and Technical Services				\$27,069.92
500 Other Purchased Services				
520 Insurance – General				1,692.58
530 Communications				8,251.51
Total Other Purchased Services				\$9,944.09
600 Supplies				
610 General Supplies				96.00
Total Supplies				\$96.00
Total 2330 Tax Assessment and Collection Services				\$62,335.20

General Fund (10)

2350 Legal and Accounting Services

Elementary

Secondary

Federal

Total

300 Purchased Professional and Technical Services

330 Other Professional Services

8,091.00

Total Purchased Professional and Technical Services

\$8,091.00

Total 2350 Legal and Accounting Services

\$8,091.00

LEA : 108561803 Conemaugh Township Area SD

Printed 11/15/2023 3:08:55 PM

General Fund (10)

	<u>Elementary</u>	<u>Secondary</u>	<u>Federal</u>	<u>Total</u>
2360 Office of the Superintendent / Executive Director Services				
100 Personnel Services – Salaries				
100 Personnel Services – Salaries				204,972.92
Total Personnel Services – Salaries				\$204,972.92
200 Personnel Services – Employee Benefits				
210 Group Insurance – Contracted Provider				35,233.88
220 Social Security Contributions				15,363.81
230 PSERS Retirement Contributions				66,696.49
260 Workers' Compensation				676.36
292 Health Savings Accounts				2,800.00
Total Personnel Services – Employee Benefits				\$120,770.54
300 Purchased Professional and Technical Services				
329 Professional Educational Services – Other				400.00
Total Purchased Professional and Technical Services				\$400.00
500 Other Purchased Services				
530 Communications	418.79	418.78		837.57
580 Travel				3,161.26
Total Other Purchased Services	\$418.79	\$418.78		\$3,998.83
600 Supplies				
610 General Supplies				1,288.91
630 Food				208.00
640 Books and Periodicals				333.00
650 Supplies & Fees – Technology Related				4,630.00
Total Supplies				\$6,459.91
800 Other Objects				
810 Dues and Fees				4,627.00
Total Other Objects				\$4,627.00
Total 2360 Office of the Superintendent / Executive Director Services	\$418.79	\$418.78		\$341,229.20

General Fund (10)

2380 Office of the Principal Services

100 Personnel Services – Salaries

	<u>Elementary</u>	<u>Secondary</u>	<u>Federal</u>	<u>Total</u>
100 Personnel Services – Salaries	188,279.82	237,813.20		426,093.02
Total Personnel Services – Salaries	\$188,279.82	\$237,813.20		\$426,093.02

200 Personnel Services – Employee Benefits

210 Group Insurance – Contracted Provider	29,286.37	67,326.28		96,612.65
220 Social Security Contributions	14,384.38	17,594.29		31,978.67
230 PSERS Retirement Contributions	65,613.41	83,801.89		149,415.30
260 Workers' Compensation	621.41	784.65		1,406.06
292 Health Savings Accounts	2,800.00	5,499.99		8,299.99
Total Personnel Services – Employee Benefits	\$112,705.57	\$175,007.10		\$287,712.67

500 Other Purchased Services

520 Insurance – General		100.00		100.00
530 Communications	600.00	1,157.15		1,757.15
580 Travel	30.25	661.06		691.31
Total Other Purchased Services	\$630.25	\$1,918.21		\$2,548.46

600 Supplies

610 General Supplies	10,215.58	1,427.13		11,642.71
640 Books and Periodicals	2,158.76	629.40		2,788.16
Total Supplies	\$12,374.34	\$2,056.53		\$14,430.87

800 Other Objects

810 Dues and Fees	160.00	1,430.00		1,590.00
Total Other Objects	\$160.00	\$1,430.00		\$1,590.00

Total 2380 Office of the Principal Services

	\$314,149.98	\$418,225.04		\$732,375.02
--	---------------------	---------------------	--	---------------------

LEA : 108561803 Conemaugh Township Area SD

Printed 11/15/2023 3:08:55 PM

General Fund (10)

	<u>Elementary</u>	<u>Secondary</u>	<u>Federal</u>	<u>Total</u>
2400 Support Services – Pupil Health				
100 Personnel Services – Salaries				
100 Personnel Services – Salaries				131,859.00
Total Personnel Services – Salaries				\$131,859.00
200 Personnel Services – Employee Benefits				
210 Group Insurance – Contracted Provider				19,044.96
220 Social Security Contributions				10,087.22
230 PSERS Retirement Contributions				46,493.46
260 Workers' Compensation				435.24
292 Health Savings Accounts				1,400.00
Total Personnel Services – Employee Benefits				\$77,460.88
300 Purchased Professional and Technical Services				
329 Professional Educational Services – Other			2,187.50	2,187.50
330 Other Professional Services			1,158.00	121,252.05
Total Purchased Professional and Technical Services			\$3,345.50	\$123,439.55
400 Purchased Property Services				
430 Repairs and Maintenance Services				342.00
Total Purchased Property Services				\$342.00
500 Other Purchased Services				
580 Travel				454.18
Total Other Purchased Services				\$454.18
600 Supplies				
610 General Supplies				2,918.46
Total Supplies				\$2,918.46
Total 2400 Support Services – Pupil Health			\$3,345.50	\$336,474.07

General Fund (10)

2420 Medical Services

Elementary

Secondary

Federal

Total

300 Purchased Professional and Technical Services

329 Professional Educational Services – Other

2,187.50

2,187.50

Total Purchased Professional and Technical Services

\$2,187.50

\$2,187.50

600 Supplies

610 General Supplies

188.34

Total Supplies

\$188.34

Total 2420 Medical Services

\$2,187.50

\$2,375.84

General Fund (10)

2440 Nursing Services

	<u>Elementary</u>	<u>Secondary</u>	<u>Federal</u>	<u>Total</u>
100 Personnel Services – Salaries				
100 Personnel Services – Salaries				131,859.00
Total Personnel Services – Salaries				\$131,859.00
200 Personnel Services – Employee Benefits				
210 Group Insurance – Contracted Provider				19,044.96
220 Social Security Contributions				10,087.22
230 PSERS Retirement Contributions				46,493.46
260 Workers' Compensation				435.24
292 Health Savings Accounts				1,400.00
Total Personnel Services – Employee Benefits				\$77,460.88
300 Purchased Professional and Technical Services				
330 Other Professional Services				6,500.00
Total Purchased Professional and Technical Services				\$6,500.00
400 Purchased Property Services				
430 Repairs and Maintenance Services				342.00
Total Purchased Property Services				\$342.00
500 Other Purchased Services				
580 Travel				454.18
Total Other Purchased Services				\$454.18
600 Supplies				
610 General Supplies				2,730.12
Total Supplies				\$2,730.12
Total 2440 Nursing Services				\$219,346.18

General Fund (10)

2490 Other Health Services

Elementary

Secondary

Federal

Total

300 Purchased Professional and Technical Services

330 Other Professional Services

1,158.00

114,752.05

Total Purchased Professional and Technical Services

\$1,158.00

\$114,752.05

Total 2490 Other Health Services

\$1,158.00

\$114,752.05

LEA : 108561803 Conemaugh Township Area SD

Printed 11/15/2023 3:08:55 PM

General Fund (10)

	<u>Elementary</u>	<u>Secondary</u>	<u>Federal</u>	<u>Total</u>
2500 Support Services – Business				
100 Personnel Services – Salaries				
100 Personnel Services – Salaries				229,525.92
Total Personnel Services – Salaries				\$229,525.92
200 Personnel Services – Employee Benefits				
210 Group Insurance – Contracted Provider				50,975.33
220 Social Security Contributions				16,757.83
230 PSERS Retirement Contributions				80,926.99
260 Workers' Compensation				757.19
292 Health Savings Accounts				4,200.00
299 All Other Employee Benefits				5,500.00
Total Personnel Services – Employee Benefits				\$159,117.34
300 Purchased Professional and Technical Services				
330 Other Professional Services				28,967.03
Total Purchased Professional and Technical Services				\$28,967.03
400 Purchased Property Services				
440 Rentals				1,792.80
Total Purchased Property Services				\$1,792.80
500 Other Purchased Services				
530 Communications				19,639.76
580 Travel				4,343.86
Total Other Purchased Services				\$23,983.62
600 Supplies				
610 General Supplies				4,399.87
650 Supplies & Fees – Technology Related				13,707.39
Total Supplies				\$18,107.26
800 Other Objects				
810 Dues and Fees				10,025.91
Total Other Objects				\$10,025.91
Total 2500 Support Services – Business				\$471,519.88

General Fund (10)

2510 Fiscal Services

Elementary Secondary Federal Total

100	<u>Personnel Services – Salaries</u>				
	100 Personnel Services – Salaries				229,525.92
Total Personnel Services – Salaries					\$229,525.92
200	<u>Personnel Services – Employee Benefits</u>				
	210 Group Insurance – Contracted Provider				50,975.33
	220 Social Security Contributions				16,757.83
	230 PSERS Retirement Contributions				80,926.99
	260 Workers' Compensation				757.19
	292 Health Savings Accounts				4,200.00
	299 All Other Employee Benefits				5,500.00
Total Personnel Services – Employee Benefits					\$159,117.34
300	<u>Purchased Professional and Technical Services</u>				
	330 Other Professional Services				28,967.03
Total Purchased Professional and Technical Services					\$28,967.03
400	<u>Purchased Property Services</u>				
	440 Rentals				1,792.80
Total Purchased Property Services					\$1,792.80
500	<u>Other Purchased Services</u>				
	530 Communications				2,073.99
	580 Travel				4,253.33
Total Other Purchased Services					\$6,327.32
600	<u>Supplies</u>				
	610 General Supplies				763.51
Total Supplies					\$763.51
800	<u>Other Objects</u>				
	810 Dues and Fees				8,548.07
Total Other Objects					\$8,548.07
Total 2510 Fiscal Services					\$435,041.99

General Fund (10)

	<u>Elementary</u>	<u>Secondary</u>	<u>Federal</u>	<u>Total</u>
2511 Supervision of Fiscal Services - Head of Component				
100 <u>Personnel Services – Salaries</u>				
100 Personnel Services – Salaries				229,525.92
Total Personnel Services – Salaries				\$229,525.92
200 <u>Personnel Services – Employee Benefits</u>				
210 Group Insurance – Contracted Provider				50,975.33
220 Social Security Contributions				16,757.83
230 PSERS Retirement Contributions				80,926.99
260 Workers' Compensation				757.19
292 Health Savings Accounts				4,200.00
299 All Other Employee Benefits				5,500.00
Total Personnel Services – Employee Benefits				\$159,117.34
300 <u>Purchased Professional and Technical Services</u>				
330 Other Professional Services				28,967.03
Total Purchased Professional and Technical Services				\$28,967.03
400 <u>Purchased Property Services</u>				
440 Rentals				1,792.80
Total Purchased Property Services				\$1,792.80
500 <u>Other Purchased Services</u>				
530 Communications				2,073.99
580 Travel				4,253.33
Total Other Purchased Services				\$6,327.32
600 <u>Supplies</u>				
610 General Supplies				763.51
Total Supplies				\$763.51
800 <u>Other Objects</u>				
810 Dues and Fees				8,548.07
Total Other Objects				\$8,548.07
Total 2511 Supervision of Fiscal Services - Head of Component				\$435,041.99

LEA : 108561803 Conemaugh Township Area SD

Printed 11/15/2023 3:08:55 PM

General Fund (10)

2520 Purchasing Services

Elementary

Secondary

Federal

Total

500 Other Purchased Services

530 Communications

17,565.77

580 Travel

90.53

Total Other Purchased Services

\$17,656.30

600 Supplies

610 General Supplies

3,636.36

650 Supplies & Fees – Technology Related

13,707.39

Total Supplies

\$17,343.75

800 Other Objects

810 Dues and Fees

1,477.84

Total Other Objects

\$1,477.84

Total 2520 Purchasing Services

\$36,477.89

General Fund (10)

	<u>Elementary</u>	<u>Secondary</u>	<u>Federal</u>	<u>Total</u>
2600 Operation and Maintenance of Plant Services				
100 Personnel Services – Salaries				
100 Personnel Services – Salaries				428,517.46
Total Personnel Services – Salaries				\$428,517.46
200 Personnel Services – Employee Benefits				
210 Group Insurance – Contracted Provider				79,005.53
220 Social Security Contributions				32,513.96
230 PSERS Retirement Contributions				145,312.63
260 Workers' Compensation				1,412.68
292 Health Savings Accounts				9,394.69
299 All Other Employee Benefits				3,340.00
Total Personnel Services – Employee Benefits				\$270,979.49
300 Purchased Professional and Technical Services				
330 Other Professional Services				19,870.33
390 Other Purchased Professional and Technical Services				540.00
Total Purchased Professional and Technical Services				\$20,410.33
400 Purchased Property Services				
410 Cleaning Services				11,090.00
420 Utility Services				134,357.26
430 Repairs and Maintenance Services				55,858.16
440 Rentals				3,272.65
Total Purchased Property Services				\$204,578.07
500 Other Purchased Services				
523 General Property and Liability Insurance				58,676.00
530 Communications				6,830.60
580 Travel				775.41
Total Other Purchased Services				\$66,282.01
600 Supplies				
610 General Supplies	104,973.17	118,011.43		222,984.60
620 Energy				90,267.82
Total Supplies	\$104,973.17	\$118,011.43		\$313,252.42
800 Other Objects				
810 Dues and Fees				2,754.84
Total Other Objects				\$2,754.84
Total 2600 Operation and Maintenance of Plant Services	\$104,973.17	\$118,011.43		\$1,306,774.62

LEA : 108561803 Conemaugh Township Area SD

Printed 11/15/2023 3:08:55 PM

General Fund (10)

2610 Supervision of Operation and Maintenance of Plant Services	<u>Elementary</u>	<u>Secondary</u>	<u>Federal</u>	<u>Total</u>
100 Personnel Services – Salaries				
100 Personnel Services – Salaries				51,262.19
Total Personnel Services – Salaries				\$51,262.19
200 Personnel Services – Employee Benefits				
210 Group Insurance – Contracted Provider				9,913.82
220 Social Security Contributions				3,908.97
230 PSERS Retirement Contributions				16,761.98
260 Workers' Compensation				169.12
292 Health Savings Accounts				1,400.00
299 All Other Employee Benefits				3,340.00
Total Personnel Services – Employee Benefits				\$35,493.89
500 Other Purchased Services				
530 Communications				600.00
Total Other Purchased Services				\$600.00
Total 2610 Supervision of Operation and Maintenance of Plant Services				\$87,356.08

General Fund (10)

2611 Supervision of Operation and Maintenance of Plant Services – Head of Component

Elementary

Secondary

Federal

Total

100 Personnel Services – Salaries

100 Personnel Services – Salaries

51,262.19

Total Personnel Services – Salaries

\$51,262.19

200 Personnel Services – Employee Benefits

210 Group Insurance – Contracted Provider

9,913.82

220 Social Security Contributions

3,908.97

230 PSERS Retirement Contributions

16,761.98

260 Workers' Compensation

169.12

292 Health Savings Accounts

1,400.00

299 All Other Employee Benefits

3,340.00

Total Personnel Services – Employee Benefits

\$35,493.89

500 Other Purchased Services

530 Communications

600.00

Total Other Purchased Services

\$600.00

Total 2611 Supervision of Operation and Maintenance of Plant Services – Head of Component

\$87,356.08

General Fund (10)

	<u>Elementary</u>	<u>Secondary</u>	<u>Federal</u>	<u>Total</u>
2620 Operation of Buildings Services				
100 Personnel Services – Salaries				
100 Personnel Services – Salaries				327,255.27
Total Personnel Services – Salaries				\$327,255.27
200 Personnel Services – Employee Benefits				
210 Group Insurance – Contracted Provider				69,091.71
220 Social Security Contributions				24,780.11
230 PSERS Retirement Contributions				110,920.61
260 Workers' Compensation				1,078.48
292 Health Savings Accounts				7,994.69
Total Personnel Services – Employee Benefits				\$213,865.60
300 Purchased Professional and Technical Services				
330 Other Professional Services				19,870.33
Total Purchased Professional and Technical Services				\$19,870.33
400 Purchased Property Services				
410 Cleaning Services				11,090.00
420 Utility Services				134,357.26
430 Repairs and Maintenance Services				55,858.16
440 Rentals				3,272.65
Total Purchased Property Services				\$204,578.07
500 Other Purchased Services				
523 General Property and Liability Insurance				58,676.00
530 Communications				6,230.60
580 Travel				775.41
Total Other Purchased Services				\$65,682.01
600 Supplies				
610 General Supplies	55,198.67	73,962.87		129,161.54
620 Energy				90,267.82
Total Supplies	\$55,198.67	\$73,962.87		\$219,429.36
800 Other Objects				
810 Dues and Fees				1,357.60
Total Other Objects				\$1,357.60
Total 2620 Operation of Buildings Services	\$55,198.67	\$73,962.87		\$1,052,038.24

General Fund (10)

2660 Safety and Security Services

<u>Elementary</u>	<u>Secondary</u>	<u>Federal</u>	<u>Total</u>
-------------------	------------------	----------------	--------------

100 Personnel Services – Salaries

100 Personnel Services – Salaries			50,000.00
-----------------------------------	--	--	-----------

Total Personnel Services – Salaries			\$50,000.00
--------------------------------------------	--	--	--------------------

200 Personnel Services – Employee Benefits

220 Social Security Contributions			3,824.88
-----------------------------------	--	--	----------

230 PSERS Retirement Contributions			17,630.04
------------------------------------	--	--	-----------

260 Workers' Compensation			165.08
---------------------------	--	--	--------

Total Personnel Services – Employee Benefits			\$21,620.00
-----------------------------------------------------	--	--	--------------------

300 Purchased Professional and Technical Services

390 Other Purchased Professional and Technical Services			540.00
---------------------------------------------------------	--	--	--------

Total Purchased Professional and Technical Services			\$540.00
------------------------------------------------------------	--	--	-----------------

600 Supplies

610 General Supplies	49,774.50	44,048.56	93,823.06
----------------------	-----------	-----------	-----------

Total Supplies	\$49,774.50	\$44,048.56	\$93,823.06
-----------------------	--------------------	--------------------	--------------------

800 Other Objects

810 Dues and Fees			1,397.24
-------------------	--	--	----------

Total Other Objects			\$1,397.24
----------------------------	--	--	-------------------

Total 2660 Safety and Security Services	\$49,774.50	\$44,048.56	\$167,380.30
------------------------------------------------	--------------------	--------------------	---------------------

General Fund (10)

	<u>Elementary</u>	<u>Secondary</u>	<u>Federal</u>	<u>Total</u>
2700 Student Transportation Services				
300 <u>Purchased Professional and Technical Services</u>				
340 Technical Services				11,940.00
Total Purchased Professional and Technical Services				\$11,940.00
500 <u>Other Purchased Services</u>				
513 Contracted Carriers				799,840.78
516 Student Transportation Services From the IU				508.33
Total Other Purchased Services				\$800,349.11
600 <u>Supplies</u>				
610 General Supplies				460.55
Total Supplies				\$460.55
Total 2700 Student Transportation Services				\$812,749.66

LEA : 108561803 Conemaugh Township Area SD

Printed 11/15/2023 3:08:55 PM

General Fund (10)

	<u>Elementary</u>	<u>Secondary</u>	<u>Federal</u>	<u>Total</u>
2720 Vehicle Operation Services				
300 <u>Purchased Professional and Technical Services</u>				
340 Technical Services				11,940.00
Total Purchased Professional and Technical Services				\$11,940.00
500 <u>Other Purchased Services</u>				
513 Contracted Carriers				767,826.82
516 Student Transportation Services From the IU				508.33
Total Other Purchased Services				\$768,335.15
600 <u>Supplies</u>				
610 General Supplies				460.55
Total Supplies				\$460.55
Total 2720 Vehicle Operation Services				\$780,735.70

General Fund (10)

2750 Nonpublic Transportation

Elementary

Secondary

Federal

Total

500 Other Purchased Services

513 Contracted Carriers

32,013.96

Total Other Purchased Services

\$32,013.96

Total 2750 Nonpublic Transportation

\$32,013.96

LEA : 108561803 Conemaugh Township Area SD

Printed 11/15/2023 3:08:55 PM

General Fund (10)

	<u>Elementary</u>	<u>Secondary</u>	<u>Federal</u>	<u>Total</u>
2810 Planning, Research, Development and Evaluation Services				
300 <u>Purchased Professional and Technical Services</u>				
329 Professional Educational Services – Other				1,653.45
340 Technical Services				92,261.17
Total Purchased Professional and Technical Services				\$93,914.62
600 <u>Supplies</u>				
610 General Supplies				19,493.39
650 Supplies & Fees – Technology Related			4,108.26	37,395.98
Total Supplies			\$4,108.26	\$56,889.37
Total 2810 Planning, Research, Development and Evaluation Services			\$4,108.26	\$150,803.99

LEA : 108561803 Conemaugh Township Area SD

Printed 11/15/2023 3:08:55 PM

General Fund (10)

2850 State and Federal Agency Liaison Services

Elementary

Secondary

Federal

Total

300 Purchased Professional and Technical Services

390 Other Purchased Professional and Technical Services

841.00

841.00

Total Purchased Professional and Technical Services

\$841.00

\$841.00

500 Other Purchased Services

580 Travel

540.00

540.00

Total Other Purchased Services

\$540.00

\$540.00

Total 2850 State and Federal Agency Liaison Services

\$1,381.00

\$1,381.00

LEA : 108561803 Conemaugh Township Area SD

Printed 11/15/2023 3:08:55 PM

General Fund (10)

2900 Other Support Services

Elementary

Secondary

Federal

Total

500 Other Purchased Services

595 IU Payments By Withholding

2,764.91

Total Other Purchased Services

\$2,764.91

Total 2900 Other Support Services

\$2,764.91

General Fund (10)

2910 Support Services Not Listed Elsewhere In the 2000 Series

Elementary

Secondary

Federal

Total

500 Other Purchased Services

595 IU Payments By Withholding

2,764.91

Total Other Purchased Services

\$2,764.91

Total 2910 Support Services Not Listed Elsewhere In the 2000 Series

\$2,764.91

General Fund (10)

3000 Operation of Non-Instructional Services	<u>Total</u>
100 Personnel Services – Salaries	
100 Personnel Services – Salaries	217,391.28
Total Personnel Services – Salaries	\$217,391.28
200 Personnel Services – Employee Benefits	
210 Group Insurance – Contracted Provider	5,972.22
220 Social Security Contributions	16,565.81
230 PSERS Retirement Contributions	53,258.20
260 Workers’ Compensation	717.50
292 Health Savings Accounts	100.01
Total Personnel Services – Employee Benefits	\$76,613.74
300 Purchased Professional and Technical Services	
330 Other Professional Services	44,485.49
390 Other Purchased Professional and Technical Services	550.00
Total Purchased Professional and Technical Services	\$45,035.49
400 Purchased Property Services	
420 Utility Services	851.88
430 Repairs and Maintenance Services	20,278.19
Total Purchased Property Services	\$21,130.07
500 Other Purchased Services	
510 Student Transportation Services	74,688.61
530 Communications	42.85
580 Travel	11,820.68
Total Other Purchased Services	\$86,552.14
600 Supplies	
610 General Supplies	104,891.39
640 Books and Periodicals	695.00
Total Supplies	\$105,586.39
700 Property	
752 Capital Equipment – Original and Additional	3,410.00
Total Property	\$3,410.00
800 Other Objects	
810 Dues and Fees	32,652.30
860 Grants To Municipal and Community Service Organizations	1,400.00
Total Other Objects	\$34,052.30
Total 3000 Operation of Non-Instructional Services	\$589,771.41

LEA : 108561803 Conemaugh Township Area SD

Printed 11/15/2023 3:08:58 PM

General Fund (10)

3200 Student Activities

Elementary Secondary Federal Total

100	<u>Personnel Services – Salaries</u>				
	100 Personnel Services – Salaries				217,391.28
Total Personnel Services – Salaries					\$217,391.28
200	<u>Personnel Services – Employee Benefits</u>				
	210 Group Insurance – Contracted Provider				5,972.22
	220 Social Security Contributions				16,565.81
	230 PSERS Retirement Contributions				53,258.20
	260 Workers' Compensation				717.50
	292 Health Savings Accounts				100.01
Total Personnel Services – Employee Benefits					\$76,613.74
300	<u>Purchased Professional and Technical Services</u>				
	330 Other Professional Services				44,485.49
	390 Other Purchased Professional and Technical Services				550.00
Total Purchased Professional and Technical Services					\$45,035.49
400	<u>Purchased Property Services</u>				
	420 Utility Services				851.88
	430 Repairs and Maintenance Services				20,278.19
Total Purchased Property Services					\$21,130.07
500	<u>Other Purchased Services</u>				
	510 Student Transportation Services				74,688.61
	530 Communications				42.85
	580 Travel				11,820.68
Total Other Purchased Services					\$86,552.14
600	<u>Supplies</u>				
	610 General Supplies				104,891.39
	640 Books and Periodicals				695.00
Total Supplies					\$105,586.39
700	<u>Property</u>				
	752 Capital Equipment – Original and Additional				3,410.00
Total Property					\$3,410.00
800	<u>Other Objects</u>				
	810 Dues and Fees				32,652.30
Total Other Objects					\$32,652.30
Total 3200 Student Activities					\$588,371.41

LEA : 108561803 Conemaugh Township Area SD

Printed 11/15/2023 3:08:58 PM

General Fund (10)

3300 Community Services

Elementary

Secondary

Federal

Total

800 Other Objects

860 Grants To Municipal and Community Service Organizations

1,400.00

Total Other Objects

\$1,400.00

Total 3300 Community Services

\$1,400.00

General Fund (10)

4000 Facilities Acquisition, Construction and Improvement Services

Total

300 Purchased Professional and Technical Services

330 Other Professional Services

1,238,392.22

Total Purchased Professional and Technical Services

\$1,238,392.22

Total 4000 Facilities Acquisition, Construction and Improvement Services

\$1,238,392.22

LEA : 108561803 Conemaugh Township Area SD

Printed 11/15/2023 3:09:01 PM

General Fund (10)

	<u>Elementary</u>	<u>Secondary</u>	<u>Federal</u>	<u>Total</u>
4600 Existing Building Improvement Services				
300 <u>Purchased Professional and Technical Services</u>				
330 Other Professional Services			1,236,382.22	1,238,392.22
Total Purchased Professional and Technical Services			\$1,236,382.22	\$1,238,392.22
Total 4600 Existing Building Improvement Services			\$1,236,382.22	\$1,238,392.22

LEA : 108561803 Conemaugh Township Area SD

Printed 11/15/2023 3:09:06 PM

General Fund (10)

5000 Other Expenditures and Financing Uses

Total

800 Other Objects

830 Interest 263,311.55

Total Other Objects \$263,311.55

900 Other Uses of Funds

910 Redemption of Principal 446,724.26

932 Capital Reserve Fund Transfers Applicable To Fund 32 1,000,000.00

Total Other Uses of Funds \$1,446,724.26

Total 5000 Other Expenditures and Financing Uses \$1,710,035.81

General Fund (10)

5100 Debt Service / Other Expenditures and Financing Uses	<u>Elementary</u>	<u>Secondary</u>	<u>Federal</u>	<u>Total</u>
800 <u>Other Objects</u>				
830 Interest				263,311.55
Total Other Objects				\$263,311.55
900 <u>Other Uses of Funds</u>				
910 Redemption of Principal				446,724.26
Total Other Uses of Funds				\$446,724.26
Total 5100 Debt Service / Other Expenditures and Financing Uses				\$710,035.81

LEA : 108561803 Conemaugh Township Area SD

Printed 11/15/2023 3:09:06 PM

General Fund (10)

	<u>Elementary</u>	<u>Secondary</u>	<u>Federal</u>	<u>Total</u>
5110 Debt Service				
800 Other Objects				
830 Interest				262,646.28
Total Other Objects				\$262,646.28
900 Other Uses of Funds				
910 Redemption of Principal				440,000.00
Total Other Uses of Funds				\$440,000.00
Total 5110 Debt Service				\$702,646.28

LEA : 108561803 Conemaugh Township Area SD

Printed 11/15/2023 3:09:06 PM

General Fund (10)

5140 Leases and Other Right-to-Use Arrangements

Elementary

Secondary

Federal

Total

800 Other Objects

830 Interest 665.27

Total Other Objects

\$665.27

900 Other Uses of Funds

910 Redemption of Principal 6,724.26

Total Other Uses of Funds

\$6,724.26

Total 5140 Leases and Other Right-to-Use Arrangements

\$7,389.53

LEA : 108561803 Conemaugh Township Area SD

Printed 11/15/2023 3:09:06 PM

General Fund (10)

5200 Interfund Transfers – Out

Elementary

Secondary

Federal

Total

900 Other Uses of Funds

932 Capital Reserve Fund Transfers Applicable To Fund 32

1,000,000.00

Total Other Uses of Funds

\$1,000,000.00

Total 5200 Interfund Transfers – Out

\$1,000,000.00

LEA : 108561803 Conemaugh Township Area SD

Printed 11/15/2023 3:09:06 PM

General Fund (10)

5230 Capital Projects Fund Transfers

Elementary

Secondary

Federal

Total

900 Other Uses of Funds

932 Capital Reserve Fund Transfers Applicable To Fund 32

1,000,000.00

Total Other Uses of Funds

\$1,000,000.00

Total 5230 Capital Projects Fund Transfers

\$1,000,000.00

LEA : 108561803 Conemaugh Township Area SD

Printed 11/15/2023 3:09:03 PM

Capital Reserve Fund - § 1431 (32)

4000 Facilities Acquisition, Construction and Improvement Services

Total

300 Purchased Professional and Technical Services

330 Other Professional Services 344,010.43

Total Purchased Professional and Technical Services \$344,010.43

400 Purchased Property Services

430 Repairs and Maintenance Services 9,115.79

490 Other Purchased Property Services 22,719.70

Total Purchased Property Services \$31,835.49

700 Property

752 Capital Equipment – Original and Additional 85,484.75

Total Property \$85,484.75

Total 4000 Facilities Acquisition, Construction and Improvement Services \$461,330.67

LEA : 108561803 Conemaugh Township Area SD

Printed 11/15/2023 3:09:03 PM

Capital Reserve Fund - § 1431 (32)

	<u>Elementary</u>	<u>Secondary</u>	<u>Federal</u>	<u>Total</u>
4600 Existing Building Improvement Services				
300 <u>Purchased Professional and Technical Services</u>				
330 Other Professional Services				344,010.43
Total Purchased Professional and Technical Services				\$344,010.43
400 <u>Purchased Property Services</u>				
430 Repairs and Maintenance Services				9,115.79
490 Other Purchased Property Services				22,719.70
Total Purchased Property Services				\$31,835.49
700 <u>Property</u>				
752 Capital Equipment – Original and Additional				85,484.75
Total Property				\$85,484.75
Total 4600 Existing Building Improvement Services				\$461,330.67

	<u>General Fund(10)</u>	<u>Student Sponsored Activity Fund(21)</u>	<u>Public Purpose Trust(27)</u>	<u>Other Compt Approved (28)</u>	<u>Athletic / Activity(29)</u>
1000 Instruction					
1100 Regular Programs - Elementary / Secondary	6,533,842.28				
1200 Special Programs - Elementary / Secondary	1,665,692.00				
1300 Vocational Education	656,097.94				
1400 Other Instructional Programs - Elementary / Secondary	68,120.08				
1500 Nonpublic School Programs	7,686.94				
Total Instruction	\$8,931,439.24				
2000 Support Services					
2100 Support Services - Students	631,601.21				
2200 Support Services - Instructional Staff	402,966.31				
2300 Support Services - Administration	1,206,967.79				
2400 Support Services - Pupil Health	336,474.07				
2500 Support Services - Business	471,519.88				
2600 Operation and Maintenance of Plant Services	1,306,774.62				
2700 Student Transportation Services	812,749.66				
2800 Support Services - Central	152,184.99				
2900 Other Support Services	2,764.91				
Total Support Services	\$5,324,003.44				
3000 Operation of Non-Instructional Services					
3200 Student Activities	588,371.41				
3300 Community Services	1,400.00				
Total Operation of Non-Instructional Services	\$589,771.41				
4000 Facilities Acquisition, Construction and Improvement Services					
4600 Existing Building Improvement Services	1,238,392.22				
Total Facilities Acquisition, Construction and Improvement Services	\$1,238,392.22				
5000 Other Expenditures and Financing Uses					
5100 Debt Service / Other Expenditures and Financing Uses	710,035.81				
5200 Interfund Transfers - Out	1,000,000.00				
Total Other Expenditures and Financing Uses	\$1,710,035.81				
TOTAL ACTUAL EXPENDITURES & OTHER FINANCING USES	\$17,793,642.12				

	<u>Capital Reserve (690.1850)(31)</u>	<u>Capital Reserve (1431)(32)</u>	<u>Other Capital Projects Fund(39)</u>	<u>Debt Service(40)</u>	<u>Permanent(90)</u>
1000 Instruction					
1100 Regular Programs - Elementary / Secondary					
1200 Special Programs - Elementary / Secondary					
1300 Vocational Education					
1400 Other Instructional Programs - Elementary / Secondary					
1500 Nonpublic School Programs					
Total Instruction					
2000 Support Services					
2100 Support Services - Students					
2200 Support Services - Instructional Staff					
2300 Support Services - Administration					
2400 Support Services - Pupil Health					
2500 Support Services - Business					
2600 Operation and Maintenance of Plant Services					
2700 Student Transportation Services					
2800 Support Services - Central					
2900 Other Support Services					
Total Support Services					
3000 Operation of Non-Instructional Services					
3200 Student Activities					
3300 Community Services					
Total Operation of Non-Instructional Services					
4000 Facilities Acquisition, Construction and Improvement Services					
4600 Existing Building Improvement Services			461,330.67		
Total Facilities Acquisition, Construction and Improvement Services				\$461,330.67	
5000 Other Expenditures and Financing Uses					
5100 Debt Service / Other Expenditures and Financing Uses					
5200 Interfund Transfers - Out					
Total Other Expenditures and Financing Uses					
TOTAL ACTUAL EXPENDITURES & OTHER FINANCING USES				\$461,330.67	

Total

1000 <u>Instruction</u>	
1100 Regular Programs - Elementary / Secondary	6,533,842.28
1200 Special Programs - Elementary / Secondary	1,665,692.00
1300 Vocational Education	656,097.94
1400 Other Instructional Programs - Elementary / Secondary	68,120.08
1500 Nonpublic School Programs	7,686.94
Total Instruction	\$8,931,439.24
2000 <u>Support Services</u>	
2100 Support Services - Students	631,601.21
2200 Support Services - Instructional Staff	402,966.31
2300 Support Services - Administration	1,206,967.79
2400 Support Services - Pupil Health	336,474.07
2500 Support Services - Business	471,519.88
2600 Operation and Maintenance of Plant Services	1,306,774.62
2700 Student Transportation Services	812,749.66
2800 Support Services - Central	152,184.99
2900 Other Support Services	2,764.91
Total Support Services	\$5,324,003.44
3000 <u>Operation of Non-Instructional Services</u>	
3200 Student Activities	588,371.41
3300 Community Services	1,400.00
Total Operation of Non-Instructional Services	\$589,771.41
4000 <u>Facilities Acquisition, Construction and Improvement Services</u>	
4600 Existing Building Improvement Services	1,699,722.89
Total Facilities Acquisition, Construction and Improvement Services	\$1,699,722.89
5000 <u>Other Expenditures and Financing Uses</u>	
5100 Debt Service / Other Expenditures and Financing Uses	710,035.81
5200 Interfund Transfers - Out	1,000,000.00
Total Other Expenditures and Financing Uses	\$1,710,035.81
TOTAL ACTUAL EXPENDITURES & OTHER FINANCING USES	\$18,254,972.79

LEA : 108561803 Conemaugh Township Area SD

Printed 11/15/2023 3:09:18 PM

PSERS Salary Data (Salary Data should relate to the General Fund only)

Amount Description	Amount
Total Salary Base for salaries subject to PSERS withholding	6,291,819.65
Total Federally Funded salaries subject to PSERS withholding	222,157.66
	<hr/>

Title I Expenditure Data

Amount Description	Amount
Expenditures Funded with Current Title I Funds	162,364.81
Expenditures Funded with Carry over Title I Funds	
Total Title I Expenditure Data	<hr/> \$162,364.81 <hr/>

Title IV Revenue Data

Amount Description	Amount
Revenue from Title IV-A-1: Student Support and Academic Enrichment Grants	12,608.70
Revenue from Title IV-B: 21st Century Community Learning Centers	
	<hr/>

Title V Revenue Data

Amount Description	Amount
Revenue from Title V-B-2: Rural and Low-Income School Programs	
Revenue from Title V-B-1: Small Rural School Achievement (Directly from the Federal Govt)	
	<hr/>

1.	<u>Current Special Education Expenditures within Function 1000</u> See list of exclusions in the note below.	1,343,382.46
2.	<u>Current Special Education Expenditures within Function 2000</u> See list of exclusions in the note below.	293,835.83
2A.	<u>Current Special Education Expenditures within Sub-Function 2100</u> This data should also be included in line 2 above. See list of exclusions in the note below.	118,362.07
2B.	<u>Current Special Education Expenditures within Sub-Function 2200</u> This data should also be included in line 2 above. See list of exclusions in the note below.	29,163.89
2C.	<u>Current Special Education Expenditures within Sub-Function 2700</u> This data should also be included in line 2 above. See list of exclusions in the note below.	146,309.87
3.	<u>Current Special Education Expenditures within Sub-Function 3100</u> See list of exclusions in the note below.	
4.	<u>Current Special Education Expenditures within Sub-Function 3200</u> See list of exclusions in the note below.	

Note: The Current Special Education Expenditure amounts for each line should be calculated as follows:

- * Include the total expenditures for special education costs from all governmental funds and the food service fund 51 for the function/sub-function requested
- * Exclude data from sub-functions: 1243,1450,1500,1600,1807,2280,2450,2750,2990
- * Exclude data from objects: 322,511,512,516,561,562,564,566,592,593,594,595,596,597,700,830,899

Benefits for Staff Relative to Collective Bargaining Agreements

	OBJECT	COVERED	NOT COVERED	TOTAL
10 General Fund	No Self Insurance data to report			
	211 Medical Insurance	1,030,098.24	306,772.87	1,336,871.11
	212 Dental Insurance	54,618.96	12,844.93	67,463.89
	215 Eye Care Insurance	11,077.91	3,932.12	15,010.03
	216 Prescription Insurance			
	271 Self-Insurance Medical Benefits			
	272 Self-Insurance Dental Benefits			
	275 Self-Insurance Eye Care Benefits			
	276 Self-Insurance Prescription Benefits			
	FUND TOTAL	\$1,095,795.11	\$323,549.92	\$1,419,345.03
50 Enterprise Fund	No Self Insurance data to report			
	211 Medical Insurance		71,794.21	71,794.21
	212 Dental Insurance		1,905.16	1,905.16
	215 Eye Care Insurance		601.28	601.28
	216 Prescription Insurance			
	271 Self-Insurance Medical Benefits			
	272 Self-Insurance Dental Benefits			
	275 Self-Insurance Eye Care Benefits			
	276 Self-Insurance Prescription Benefits			
	FUND TOTAL		\$74,300.65	\$74,300.65
60 Internal Service Fund	No Self Insurance data to report			
	211 Medical Insurance			
	212 Dental Insurance			
	215 Eye Care Insurance			
	216 Prescription Insurance			
	271 Self-Insurance Medical Benefits			
	272 Self-Insurance Dental Benefits			
	275 Self-Insurance Eye Care Benefits			
	276 Self-Insurance Prescription Benefits			
	FUND TOTAL			
Total of All Funds		\$1,095,795.11	\$397,850.57	\$1,493,645.68

LEA : 108561803 Conemaugh Township Area SD

Printed 11/15/2023 3:09:24 PM

Function	Special Education (Prior Year)	Nonspecial Education (Prior Year)	Total (Prior Year)	Special Education (Current Year)	Nonspecial Education (Current Year)	Total (Current Year)
2120 Guidance Services	72,808.37	315,650.94	388,459.31	67,385.41	292,195.20	359,580.61
2140 Psychological Services	26,943.72	116,810.90	143,754.62	29,634.80	128,501.82	158,136.62
2150 Speech Pathology and Audiology Services						
2160 Social Work Services	15,787.10	68,442.85	84,229.95	21,341.86	92,542.12	113,883.98
2260 Instruction and Curriculum Development Services	28,018.62	121,470.95	149,489.57	29,163.89	126,459.86	155,623.75
2350 Legal and Accounting Services	987.65	4,281.85	5,269.50	1,516.25	6,574.75	8,091.00
2420 Medical Services	71.85	311.50	383.35	445.23	1,930.61	2,375.84
2440 Nursing Services	40,078.65	173,755.63	213,834.28	41,105.47	178,240.71	219,346.18
2700 Student Transportation Services	142,473.46	617,674.59	760,148.05	146,309.87	666,439.79	812,749.66
Total	\$327,169.42	\$1,418,399.21	\$1,745,568.63	\$336,902.78	\$1,492,884.86	\$1,829,787.64

LEA : 108561803 Conemaugh Township Area SD

Printed 11/15/2023 3:09:27 PM

(PRINCIPAL AMOUNTS ONLY)

GOVERNMENTAL FUNDS/ ACTIVITIES

	Short-Term Borrowing	General Obligation Bonds/Notes	Authority Building Obligations	Leases, Other Right to Use Arrangements	Extended Term Financing Agreements	Other Long Term Debt/Liabilities	OPEB, Comp Abs, Net Pension Liab	Total
1. Debt at Beginning of Fiscal Year		9,450,000.00					20,444,017.00	29,894,017.00
2. Additional Debt Incurred During Year				52,331.91			1,419,887.00	1,472,218.91
3. Retirements and Repayments		440,000.00		6,724.26			194,000.00	640,724.26
4. Debt at End of Fiscal Year		9,010,000.00		45,607.65			21,669,904.00	30,725,511.65
5. Accreted Interest at End Of Fiscal Year								
6. Total Debt and Accreted Interest		9,010,000.00		45,607.65			21,669,904.00	30,725,511.65
7. Current Portion P&I - Due within 1 year		736,961.88		15,578.16			26,860.00	779,400.04
8. Interest Paid during current fiscal year		262,646.28		665.27				263,311.55

(PRINCIPAL AMOUNTS ONLY)

PROPRIETARY FUNDS

	Short-Term Borrowing	General Obligation Bonds/Notes	Authority Building Obligations	Leases, Other Right to Use Arrangements	Extended Term Financing Agreements	Other Long Term Debt/Liabilities	OPEB, Comp Abs, Net Pension Liab	Total
1. Debt at Beginning of Fiscal Year							39,276.00	39,276.00
2. Additional Debt Incurred During Year								
3. Retirements and Repayments							1,558.00	1,558.00
4. Debt at End of Fiscal Year							37,718.00	37,718.00
5. Accreted Interest at End Of Fiscal Year								
6. Total Debt and Accreted Interest							37,718.00	37,718.00
7. Current Portion P&I - Due within 1 year							3,555.00	3,555.00
8. Interest Paid during current fiscal year								

LEA : 108561803 Conemaugh Township Area SD

Printed 11/15/2023 3:09:27 PM

Total Principal and Interest Payments Made by Your School - All Funds

Function	Fund		Principal (910)	Principal (920)	Interest (830)	Total (Principal +Interest)	Misc Other Uses (990)
5110	10	General Fund	440,000.00		262,646.28	702,646.28	
5110	20	Special Revenue Funds					
5110	30	Capital Projects Funds					
5110	40	Debt Service Fund					
5110	90	Permanent Fund					
5120	10	General Fund					
5120	20	Special Revenue Funds					
5120	30	Capital Projects Funds					
5120	40	Debt Service Fund					
5140	10	General Fund	6,724.26		665.27	7,389.53	
5140	20	Special Revenue Funds					
5140	30	Capital Projects Funds					
5140	40	Debt Service Fund					
5140	90	Permanent Fund					
Total Debt Payments - Governmental Funds			\$446,724.26		\$263,311.55	\$710,035.81	

Function	Fund		Principal (910)	Principal (920)	Interest (830)	Total (Principal +Interest)
5110	50	Enterprise Fund				
5110	60	Internal Service Fund				
5120	50	Enterprise Fund				
5120	60	Internal Service Fund				
5140	50	Enterprise Fund				
5140	60	Internal Service Fund				
Total Debt Payments - Proprietary Funds						

Debt Details
Governmental Funds/ Activities

Debt Category	Debt Issue Date (MM/YYYY)	Principal Amounts Only			Debt at End of Fiscal Year	Current Portion Due Within One Year (Principal and Interest)	Interest Paid During Fiscal Year
		Debt at Beginning of Fiscal Year	Additions	Reductions / Repayments			
General Obligation Bonds/Notes – CIB	06/2019	9,265,000.00		260,000.00	9,005,000.00	731,902.50	260,502.52
General Obligation Bonds/Notes – CIB	05/2014	185,000.00		180,000.00	5,000.00	5,059.38	2,143.76
Leases and Other Right to Use Arrangements			52,331.91	6,724.26	45,607.65	15,578.16	665.27
Compensated Absences		250,017.00	11,887.00		261,904.00	26,860.00	
Other Post-Employment Benefits (OPEB)		2,663,000.00		194,000.00	2,469,000.00		
Net Pension Liability		17,531,000.00	1,408,000.00		18,939,000.00		
Totals for Debt Entered:		\$29,894,017.00	\$1,472,218.91	\$640,724.26	\$30,725,511.65	\$779,400.04	\$263,311.55

Bond Details
Proprietary Funds

Debt Category	Debt Issue Date (MM/YYYY)	Principal Amounts Only			Debt at End of Fiscal Year	Current Portion Due Within One Year (Principal and Interest)	Interest Paid During Fiscal Year
		Debt at Beginning of Fiscal Year	Additions	Reductions / Repayments			
Compensated Absences		39,276.00		1,558.00	37,718.00	3,555.00	
Totals for Debt Entered:		\$39,276.00		\$1,558.00	\$37,718.00	\$3,555.00	

General Fund (10)

Section 1: Tuition/Purchased Services as Reported within Expenditure Detail

	Amount
Tuition Reported in General Fund Expenditures 1000-560	1,127,476.44
Purchased Services in General Fund Expenditures 1000-594 and 1000-597	
Section 1 Total	\$1,127,476.44

Section 2: Tuition Paid to Institution Types During Fiscal Year

	Tuition Paid For Nonspecial Education	Tuition Paid For Special Education	Total
1 1306 Institutions			
2 Institutionalized Children's Programs			
3 Juveniles Incarcerated in Adult Facilities			
4 Residential Treatment Facilities			
5 Other Local Education Agencies		59,861.44	59,861.44
6 Brick and Mortar Charter Schools			
7 Cyber Charter Schools	262,540.46	149,817.80	412,358.26
8 Career and Technology Centers	655,256.74		655,256.74
9 Approved Private Schools			
10 PA Chartered Schools for the Deaf and Blind			
11 Private Residential Rehabilitative Institutions			
12 Juvenile Detention Centers			
13 Special Program Jointures			
14 Other Tuition Not Included Elsewhere In This Section			
Section 2 Total	\$917,797.20	\$209,679.24	\$1,127,476.44

LEA : 108561803 Conemaugh Township Area SD

Printed 11/15/2023 3:09:31 PM

Food Service / Cafeteria Operations Fund (51)

3000 Operation of Non-Instructional Services

Total

100 Personnel Services – Salaries

100 Personnel Services – Salaries 234,428.00

Total Personnel Services – Salaries \$234,428.00

200 Personnel Services – Employee Benefits

210 Group Insurance – Contracted Provider 58,835.00

220 Social Security Contributions 19,392.00

230 PSERS Retirement Contributions 88,230.00

260 Workers' Compensation 779.00

292 Health Savings Accounts 6,300.00

299 All Other Employee Benefits 27,532.00

Total Personnel Services – Employee Benefits \$201,068.00

400 Purchased Property Services

430 Repairs and Maintenance Services 3,829.00

460 Extermination Services 855.00

Total Purchased Property Services \$4,684.00

600 Supplies

610 General Supplies 14,379.00

630 Food 387,245.00

650 Supplies & Fees – Technology Related 940.00

Total Supplies \$402,564.00

700 Property

740 Depreciation 52,525.00

Total Property \$52,525.00

800 Other Objects

810 Dues and Fees 1,695.00

Total Other Objects \$1,695.00

Total 3000 Operation of Non-Instructional Services \$896,964.00

Food Service / Cafeteria Operations Fund (51)

	<u>Elementary</u>	<u>Secondary</u>	<u>Federal</u>	<u>Total</u>
3100 Food Services				
100 Personnel Services – Salaries				
100 Personnel Services – Salaries				234,428.00
Total Personnel Services – Salaries				\$234,428.00
200 Personnel Services – Employee Benefits				
210 Group Insurance – Contracted Provider				58,835.00
220 Social Security Contributions				19,392.00
230 PSERS Retirement Contributions				88,230.00
260 Workers' Compensation				779.00
292 Health Savings Accounts				6,300.00
299 All Other Employee Benefits				27,532.00
Total Personnel Services – Employee Benefits				\$201,068.00
400 Purchased Property Services				
430 Repairs and Maintenance Services				3,829.00
460 Extermination Services				855.00
Total Purchased Property Services				\$4,684.00
600 Supplies				
610 General Supplies				14,379.00
630 Food				387,245.00
650 Supplies & Fees – Technology Related				940.00
Total Supplies				\$402,564.00
700 Property				
740 Depreciation				52,525.00
Total Property				\$52,525.00
800 Other Objects				
810 Dues and Fees				1,695.00
Total Other Objects				\$1,695.00
Total 3100 Food Services				\$896,964.00

	<u>Food Service(51)</u>	<u>Child Care Operations(52)</u>	<u>Other Enterprise(58)</u>	<u>Internal Service(60)</u>	<u>Total</u>
3000 <u>Operation of Non-Instructional Services</u>					
3100 Food Services	896,964.00				896,964.00
Total Operation of Non-Instructional Services	\$896,964.00				\$896,964.00
TOTAL ACTUAL EXPENDITURES & OTHER FINANCING USES	\$896,964.00				\$896,964.00

LEA : 108561803 Conemaugh Township Area SD

Printed 11/15/2023 3:09:40 PM

Fund	School	School Number	Local Personnel	Local Nonpersonnel	State Personnel	State Nonpersonnel	Federal Personnel	Federal Nonpersonnel	Total	Explanation
10										
	Conemaugh Twp Area El Sch	3977	1,318,961.62	177,960.26	3,104,307.85	488,020.48	272,513.38	123,526.57	5,485,290.16	
	Conemaugh Twp Area MS/SHS	3978	1,631,902.44	583,850.64	3,840,845.30	1,601,093.82	136,177.51	109,662.62	7,903,532.33	
Total			2,950,864.06	761,810.90	6,945,153.15	2,089,114.30	408,690.89	233,189.19	13,388,822.49	