

LEA Name : Conemaugh Township Area SD  
Address : 300 West Campus Avenue  
Davidsville, PA 15928

County : Somerset  
AUN Number : 108561803  
LEA Type : SD

## Annual Financial Report Accuracy Certification Statement

For Fiscal Year Ending  
6/30/2024

Pennsylvania Department of Education  
&

Office of Comptroller Operations

PDE-2056: Intermediate Unit  
PDE-2057: School District, AVTS/CTC, Charter School,  
and Special Program Jointure

**CERTIFICATION:** By signing this page I agree that the electronic data submitted is a complete and accurate statement of the financial operations and status of the local education agency for the fiscal year. It has been prepared in accordance with generally accepted accounting principles and established Commonwealth of PA reporting guidelines.

Chief School Administrator Signature

Date 11/12/2024

Board Secretary Signature

Date 11/12/2024

Brandon Studer

(814)241-7831 Ext :

Contact Person

Contact Person Telephone Number

brandon.studer@ctasd.org

(814)479-2620

Contact Person E-mail Address

Contact Person Fax Number

**Audit Certification**  
**Annual Financial Report:**  
For Fiscal Year Ending **6/30/2024**  
**(Pursuant to PA School Code Section 218(b))**

LEA Name : Conemaugh Township Area SD  
AUN Number : 108561803  
County : Somerset

<b>Audit Certification Due:</b> 12/31/2024
---

**This certification is applicable to the Annual Financial Report data submitted through the Consolidated Financial Reporting System (CFRS).**

CERTIFICATION: By signing this page I agree that the financial statements of the school have been properly audited as noted above pursuant to Article XXIV, and in the auditor's professional opinion, the Annual Financial Report (PDE-2057) submitted through CFRS is materially consistent with the audited financial statements.

**Chief School Administrator**

**Board Secretary**

\_\_\_\_\_  
Signature

\_\_\_\_\_  
Date

\_\_\_\_\_  
Signature

\_\_\_\_\_  
Date

Brandon Studer

\_\_\_\_\_  
Contact Person

brandon.studer@ctasd.org

\_\_\_\_\_  
Contact Person E-mail Address

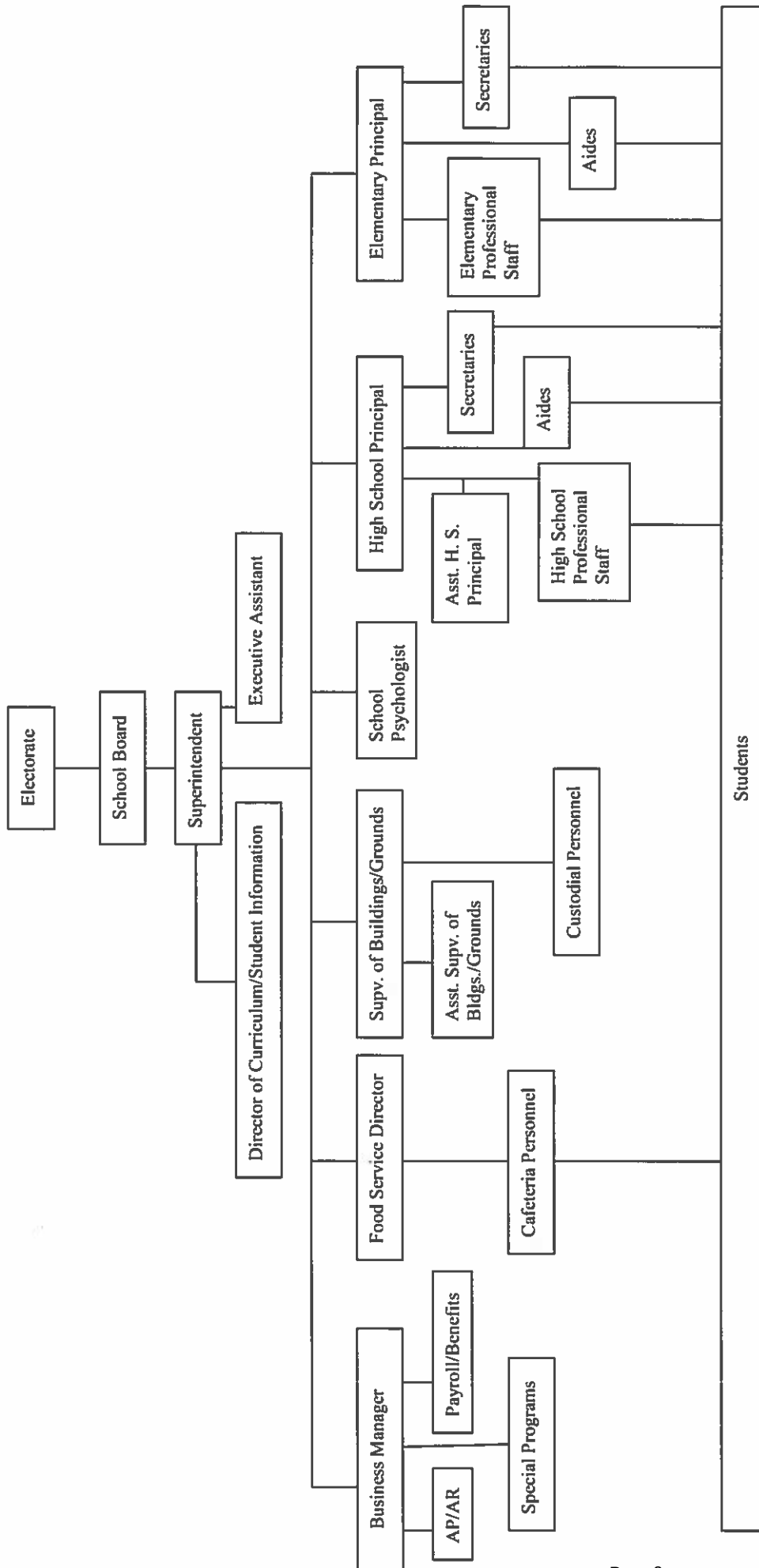
(814)241-7831      Ext :

\_\_\_\_\_  
Contact Person Telephone Number

(814)479-2620

\_\_\_\_\_  
Contact Person Fax Number

# CONEMAUGH TOWNSHIP AREA SCHOOL DISTRICT





Book	Policy Manual
Section	600 Finances
Title	GASB Statement 34
Code	622
Status	Active
Adopted	July 18, 2000
Last Revised	February 20, 2024
Prior Revised Dates	07/17/2001

### **Purpose**

The Board recognizes the need to implement the required accounting and financial reporting standards stipulated by the Pennsylvania Department of Education.

The primary objectives of implementing the Governmental Accounting Standards Board (GASB) Statement 34 are to assure compliance with state requirements, and properly account for both the financial and economic resources of the district.

### **Authority**

Participation of the school district in any such activity shall be in accordance with Board policy.[\[1\]](#)  
[\[2\]](#)

### **Delegation of Responsibility**

The responsibility to coordinate the compilation and preparation of all information necessary to implement this policy is delegated to the Business Manager.

The designated individual shall be responsible for implementing the necessary procedures to establish and maintain a fixed asset inventory, including depreciation schedules. Depreciation shall be computed on a straight-line basis over the useful lives of the assets, using an averaging convention. Normal maintenance and repairs shall be charged to expense as incurred; major renewals and betterments that materially extend the life or increase the value of the asset shall be capitalized. A schedule of accumulated depreciation shall be consistent from year to year. The basis for depreciation, including groups of assets and useful lives, shall be in writing and submitted for review to the independent auditors.

The Business Manager shall prepare the required Management Discussion and Analysis (MD&A). The MD&A shall be in the form required by GASB Statement 34 and shall be submitted to the Board for approval, prior to publication.

Prior to submission of the MD&A for Board approval, the district's independent auditors shall review the MD&A, in accordance with SAS No. 52, "Required Supplementary Information".

### **Guidelines**

In order to associate debt with acquired assets, and to avoid net asset deficits, any asset that has been acquired with debt proceeds shall be capitalized, regardless of the cost of the asset. The asset life of these assets shall be considered relative to the time of the respective debt amortizations.

For all other assets not acquired by debt proceeds, the dollar value of any single item for inclusion in the fixed assets accounts shall be not less than \$5,000.

The capitalization threshold shall be set at a level that will capture at least eighty percent (80%) of all fixed assets.

The assets listed below do not normally individually meet capitalization threshold criteria:

1. Library books.
2. Classroom texts.
3. Computer equipment.
4. Classroom furniture.

These asset category costs shall be capitalized and depreciated as groups when that group's acquisition cost exceeds the capitalization threshold in any given fiscal year.

For group asset depreciation purposes, the estimated useful life of the group may be based on the weighted average or simple average of the useful life of individual items, or on an assessment of the life of the group as a whole. Periodically, the district shall review the estimated life of groups of assets and adjust the remaining depreciation life of the group.

Assets that fall below the capitalization threshold for GASB 34 reporting purposes may still be significant for insurance, warranty service and obsolescence/replacement policy tracking purposes. The district may record and maintain these non-GASB 34 asset inventories in subsidiary ledgers.

Legal

[1. 24 P.S. 218](#)

[2. 24 P.S. 613](#)

Governmental Accounting Standards Board, Statement No. 34

<u>Val Number</u>	<u>Description</u>	<u>Justification</u>
30116	<p>Revenue Detail: A large amount has been reported as Earnings on Investments in Fund 32, account 6500, which should only include interest and/or dividend earnings. Correct or provide a brief explanation of the revenue reported.</p> <p>Revenue Detail 6500, Fund 32: \$80,387.60</p>	<p>The amount recorded to function 6500 represents only earnings on investments in FY 2024.</p>
30149	<p>Revenue Detail: An amount has been reported in revenue code 6839. Any revenue received or passed through from another PA LEA (Intermediate Units, School Districts, Charter Schools, and Career Technology Centers) should be reported in the most applicable account(s) 6831, 6832, 6833, 6834, 6836, and/or 6838. Please confirm within the justification that no pass through funds from other LEAs are included in 6839.</p> <p>Governmental Fund Revenue, Account 6839: \$107,175.09</p>	<p>Revenue reported in function 6839 does NOT include pass through funds from other LEAs.</p>
41140	<p>Expenditure Detail - There is an entry in account 5150-990 which should only include bond discounts. Please verify that only bond discounts are being reported within this code. Note: Underwriter's discounts are not bond discounts and should be recorded as a current expenditure in account 2390-810.</p> <p>Expenditure 5150-990, Fund 39: \$317,634.60</p>	<p>The amount reported in account 5150-990 reflects the Bond Discount on the Series 2024 Bond Issue.</p>
50160	<p>SOIN: All Governmental Fund General Obligation Bonds must include an amount for Interest Paid during Fiscal Year. Correct data or enter a justification.</p>	<p>No payments were made on the Series of 2024 General Obligation Bonds. Interest payments will commence December 2024.</p>
50450	<p>SESS - 2350 Legal and Accounting Services: SESS Schedule amounts for Special Education vary from prior year by 40% or more. Correct the data or enter a justification.</p> <p>SESS Schedule 2350: \$6,398.88 Prior Year SESS Schedule 2350: \$1,516.25</p>	<p>Expense for legal services increased due to special education litigation that opened in FY 2024.</p>

LEA : 108561803      Conemaugh Township Area SD

Printed 11/13/2024 8:24:43 AM

Amounts Expressed in Whole Dollars		<u>General Fund</u> <u>(10)</u>	<u>Student Sponsored</u> <u>Activity Fund</u> <u>(21)</u>	<u>Public Purpose Trust</u> <u>(27)</u>	<u>Other Compt Approved</u> <u>(28)</u>	<u>Athletic / Activity</u> <u>(29)</u>
<b>Assets And Deferred Outflows Of Resources</b>						
<b>Assets</b>						
0100	Cash and Cash Equivalents	5,348,767				
0110	Investments					
0120	Taxes Receivable	1,340,850				
0130	Due From Other Funds					
0141	Due From Other Governments					
0142	State Revenue Receivable	621,888				
0143	Federal Revenue Receivable	198,147				
0145	Other Intergovernmental Revenue Receivable	11,827				
0146	Due from Primary Government					
0147	Due from Component Unit					
0150	Other Receivables	6,175				
0170	Inventories	50,000				
0180	Prepaid Expenses (Expenditures)	5,636				
0190	Other Current Assets					
<b>Total Assets</b>		<b>\$7,583,290</b>				
0910	Deferred Outflows of Resources					
<b>Total Assets And Deferred Outflows Of Resources</b>		<b>\$7,583,290</b>				

LEA : 108561803      Conemaugh Township Area SD

Printed 11/13/2024 8:24:43 AM

Amounts Expressed in Whole Dollars		<u>Capital Reserve (690.</u> <u>1850)</u> <u>(31)</u>	<u>Capital Reserve (1431)</u> <u>(32)</u>	<u>Other Capital Projects</u> <u>Fund</u> <u>(39)</u>	<u>Debt Service</u> <u>(40)</u>	<u>Permanent</u> <u>(90)</u>
<b>Assets And Deferred Outflows Of Resources</b>						
<b>Assets</b>						
0100	Cash and Cash Equivalents		1,471,449	10,675,373		
0110	Investments					
0120	Taxes Receivable					
0130	Due From Other Funds					
0141	Due From Other Governments					
0142	State Revenue Receivable					
0143	Federal Revenue Receivable					
0145	Other Intergovernmental Revenue Receivable					
0146	Due from Primary Government					
0147	Due from Component Unit					
0150	Other Receivables					
0170	Inventories					
0180	Prepaid Expenses (Expenditures)					
0190	Other Current Assets					
<b>Total Assets</b>			<b>\$1,471,449</b>	<b>\$10,675,373</b>		
0910	Deferred Outflows of Resources					
<b>Total Assets And Deferred Outflows Of Resources</b>			<b>\$1,471,449</b>	<b>\$10,675,373</b>		

LEA : 108561803      Conemaugh Township Area SD

Printed 11/13/2024 8:24:43 AM

Amounts Expressed in Whole Dollars		<u>Total Governmental</u> <u>Funds</u>
<b>Assets And Deferred Outflows Of Resources</b>		
<b>Assets</b>		
0100 Cash and Cash Equivalents		17,495,589
0110 Investments		
0120 Taxes Receivable		1,340,850
0130 Due From Other Funds		
0141 Due From Other Governments		
0142 State Revenue Receivable		621,888
0143 Federal Revenue Receivable		198,147
0145 Other Intergovernmental Revenue Receivable		11,827
0146 Due from Primary Government		
0147 Due from Component Unit		
0150 Other Receivables		6,175
0170 Inventories		50,000
0180 Prepaid Expenses (Expenditures)		5,636
0190 Other Current Assets		
<b>Total Assets</b>		<b>\$19,730,112</b>
0910 Deferred Outflows of Resources		
<b>Total Assets And Deferred Outflows Of Resources</b>		<b>\$19,730,112</b>

LEA : 108561803      Conemaugh Township Area SD

Printed 11/13/2024 8:24:43 AM

Amounts Expressed in Whole Dollars		<u>General Fund</u> <u>(10)</u>	<u>Student Sponsored</u> <u>Activity Fund</u> <u>(21)</u>	<u>Public Purpose Trust</u> <u>(27)</u>	<u>Other Compt Approved</u> <u>(28)</u>	<u>Athletic / Activity</u> <u>(29)</u>
<b>Liabilities And Deferred Inflows Of Resources And Fund Balances</b>						
<b>Liabilities</b>						
0400	Due to Other Funds	112,025				
0411	Due to Other Governments	3,639				
0412	Due to Primary Government					
0413	Due to Component Unit					
0420	Accounts Payable	24,370				
0430	Contracts Payable					
0440	Current Portion of Long-Term Debt					
0450	Short-Term Payables					
0461	Accrued Salaries and Benefits	935,670				
0462	Payroll Deductions and Withholding	569,751				
0480	Unearned Revenues	3,448				
0490	Other Current Liabilities					
<b>Total Liabilities</b>		<b>\$1,648,903</b>				
0950	Deferred Inflows of Resources	1,260,282				
<b>Fund Balances</b>						
0810	Nonspendable Fund Balance	55,636				
0820	Restricted Fund Balance					
0830	Committed Fund Balance					
0840	Assigned Fund Balance	2,800,000				
0850	Unassigned Fund Balance	1,818,469				
<b>Total Fund Balances</b>		<b>\$4,674,105</b>				
<b>Total Liabilities, Deferred Inflows Of Resources And Fund Balances</b>		<b>\$7,583,290</b>				

LEA : 108561803      Conemaugh Township Area SD

Amounts Expressed in Whole Dollars			<u>Capital Reserve (690.</u> <u>1850)</u> <u>(31)</u>	<u>Capital Reserve (1431)</u> <u>(32)</u>	<u>Other Capital Projects</u> <u>Fund</u> <u>(39)</u>	<u>Debt Service</u> <u>(40)</u>	<u>Permanent</u> <u>(90)</u>
Liabilities And Deferred Inflows Of Resources And Fund Balances							
Liabilities							
0400	Due to Other Funds						
0411	Due to Other Governments						
0412	Due to Primary Government						
0413	Due to Component Unit						
0420	Accounts Payable			23,757	366,250		
0430	Contracts Payable						
0440	Current Portion of Long-Term Debt						
0450	Short-Term Payables						
0461	Accrued Salaries and Benefits						
0462	Payroll Deductions and Withholding						
0480	Unearned Revenues						
0490	Other Current Liabilities						
Total Liabilities				\$23,757	\$366,250		
0950	Deferred Inflows of Resources						
Fund Balances							
0810	Nonspendable Fund Balance						
0820	Restricted Fund Balance			1,447,692	10,309,123		
0830	Committed Fund Balance						
0840	Assigned Fund Balance						
0850	Unassigned Fund Balance						
Total Fund Balances				\$1,447,692	\$10,309,123		
Total Liabilities, Deferred Inflows Of Resources And Fund Balances				\$1,471,449	\$10,675,373		

LEA : 108561803      Conemaugh Township Area SD

Printed 11/13/2024 8:24:43 AM

Amounts Expressed in Whole Dollars		<u>Total Governmental</u> <u>Funds</u>
<b>Liabilities And Deferred Inflows Of Resources And Fund Balances</b>		
<b>Liabilities</b>		
0400 Due to Other Funds		112,025
0411 Due to Other Governments		3,639
0412 Due to Primary Government		
0413 Due to Component Unit		
0420 Accounts Payable		414,377
0430 Contracts Payable		
0440 Current Portion of Long-Term Debt		
0450 Short-Term Payables		
0461 Accrued Salaries and Benefits		935,670
0462 Payroll Deductions and Withholding		569,751
0480 Unearned Revenues		3,448
0490 Other Current Liabilities		
<b>Total Liabilities</b>		<b>\$2,038,910</b>
0950 Deferred Inflows of Resources		1,260,282
<b>Fund Balances</b>		
0810 Nonspendable Fund Balance		55,636
0820 Restricted Fund Balance		11,756,815
0830 Committed Fund Balance		
0840 Assigned Fund Balance		2,800,000
0850 Unassigned Fund Balance		1,818,469
<b>Total Fund Balances</b>		<b>\$16,430,920</b>
<b>Total Liabilities, Deferred Inflows Of Resources And Fund Balances</b>		<b>\$19,730,112</b>

LEA : 108561803      Conemaugh Township Area SD

Printed 11/13/2024 8:24:52 AM

Amounts Expressed in Whole Dollars		<u>General Fund</u> <u>(10)</u>	<u>Student Sponsored</u> <u>Activity Fund</u> <u>(21)</u>	<u>Public Purpose Trust</u> <u>(27)</u>	<u>Other Compt Approved</u> <u>(28)</u>	<u>Athletic / Activity</u> <u>(29)</u>
<b>Revenues</b>						
6000	Revenue from Local Sources	4,789,538				
7000	Revenue from State Sources	10,824,137				
8000	Revenue from Federal Sources	335,195				
<b>Total Revenues</b>		<b>\$15,948,870</b>				
<b>Expenditures</b>						
1000	Instruction	9,226,930				
2000	Support Services	5,558,302				
3000	Operation of Non-Instructional Services	587,664				
4000	Facilities Acquisition, Construction and Improvement Services	110,700				
5110	Debt Service	736,962				
5130	Refund of Prior Year Revenues / Receipts					
5140	Leases and Other Right-to-Use Arrangements	18,241				
<b>Total Expenditures</b>		<b>\$16,238,799</b>				
<b>Excess (Deficiency) Of Revenues Over Expenditures</b>		<b>(\$289,929)</b>				
<b>Other Financing Sources (Uses)</b>						
9110	Face Value of Bonds Issued					
9120	Proceeds from Refunding of Bonds					
9130	Bond Premiums					
9200	Proceeds from Extended Term Financing, Leases, and Other Right-to-Use Arrangements	10,407				
9300	Interfund Transfers - IN					
9400	Sale of or Compensation for Loss of Fixed Assets	57,000				
9710	Transfers from Component Units					
9720	Transfers from Primary Governments					
9910	Other Financing Sources Not Listed in the 9000 Series					
9990	Insurance Recoveries	11,632				
5120	Debt Service – Refunded Bonds					
5150	Bond Discounts					
5200	Interfund Transfers – Out	57,000				
5300	Transfers Out to Component Units/Primary Governments					
<b>Total Other Financing Sources (Uses)</b>		<b>\$22,039</b>				

LEA : 108561803      Conemaugh Township Area SD

Printed 11/13/2024 8:24:52 AM

Amounts Expressed in Whole Dollars		<u>Capital Reserve (690.1850)</u> <u>(31)</u>	<u>Capital Reserve (1431)</u> <u>(32)</u>	<u>Other Capital Projects</u> <u>Fund</u> <u>(39)</u>	<u>Debt Service</u> <u>(40)</u>	<u>Permanent</u> <u>(90)</u>
<b>Revenues</b>						
6000	Revenue from Local Sources		80,388	702		
7000	Revenue from State Sources					
8000	Revenue from Federal Sources					
<b>Total Revenues</b>			<b>\$80,388</b>	<b>\$702</b>		
<b>Expenditures</b>						
1000	Instruction					
2000	Support Services		63,800	222,694		
3000	Operation of Non-Instructional Services					
4000	Facilities Acquisition, Construction and Improvement Services		441,421	366,250		
5110	Debt Service					
5130	Refund of Prior Year Revenues / Receipts					
5140	Leases and Other Right-to-Use Arrangements					
<b>Total Expenditures</b>			<b>\$505,221</b>	<b>\$588,944</b>		
<b>Excess (Deficiency) Of Revenues Over Expenditures</b>			<b>(\$424,833)</b>	<b>(\$588,242)</b>		
<b>Other Financing Sources (Uses)</b>						
9110	Face Value of Bonds Issued			11,215,000		
9120	Proceeds from Refunding of Bonds					
9130	Bond Premiums					
9200	Proceeds from Extended Term Financing, Leases, and Other Right-to-Use Arrangements					
9300	Interfund Transfers - IN		57,000			
9400	Sale of or Compensation for Loss of Fixed Assets					
9710	Transfers from Component Units					
9720	Transfers from Primary Governments					
9910	Other Financing Sources Not Listed in the 9000 Series					
9990	Insurance Recoveries					
5120	Debt Service – Refunded Bonds					
5150	Bond Discounts			317,635		
5200	Interfund Transfers – Out					
5300	Transfers Out to Component Units/Primary Governments					
<b>Total Other Financing Sources (Uses)</b>			<b>\$57,000</b>	<b>\$10,897,365</b>		

Amounts Expressed in Whole Dollars		<u>Total Governmental Funds</u>
<b>Revenues</b>		
6000	Revenue from Local Sources	4,870,628
7000	Revenue from State Sources	10,824,137
8000	Revenue from Federal Sources	335,195
<b>Total Revenues</b>		<b>\$16,029,960</b>
<b>Expenditures</b>		
1000	Instruction	9,226,930
2000	Support Services	5,844,796
3000	Operation of Non-Instructional Services	587,664
4000	Facilities Acquisition, Construction and Improvement Services	918,371
5110	Debt Service	736,962
5130	Refund of Prior Year Revenues / Receipts	
5140	Leases and Other Right-to-Use Arrangements	18,241
<b>Total Expenditures</b>		<b>\$17,332,964</b>
<b>Excess (Deficiency) Of Revenues Over Expenditures</b>		<b>(\$1,303,004)</b>
<b>Other Financing Sources (Uses)</b>		
9110	Face Value of Bonds Issued	11,215,000
9120	Proceeds from Refunding of Bonds	
9130	Bond Premiums	
9200	Proceeds from Extended Term Financing, Leases, and Other Right-to-Use Arrangements	10,407
9300	Interfund Transfers - IN	57,000
9400	Sale of or Compensation for Loss of Fixed Assets	57,000
9710	Transfers from Component Units	
9720	Transfers from Primary Governments	
9910	Other Financing Sources Not Listed in the 9000 Series	
9990	Insurance Recoveries	11,632
5120	Debt Service – Refunded Bonds	
5150	Bond Discounts	317,635
5200	Interfund Transfers – Out	57,000
5300	Transfers Out to Component Units/Primary Governments	
<b>Total Other Financing Sources (Uses)</b>		<b>\$10,976,404</b>

Amounts Expressed in Whole Dollars		<u>General Fund</u> <u>(10)</u>	<u>Student Sponsored</u> <u>Activity Fund</u> <u>(21)</u>	<u>Public Purpose Trust</u> <u>(27)</u>	<u>Other Compt Approved</u> <u>(28)</u>	<u>Athletic / Activity</u> <u>(29)</u>
<b>Special And Extraordinary Items</b>						
9920	Special Items – Gains					
9930	Extraordinary Items – Gains					
5520	Special Items – Losses					
5530	Extraordinary Items – Losses					
<b>Net Change In Fund Balances</b>		<b>(\$267,890)</b>				
<b>Fund Balance</b>						
0001	Fund Balance - Beginning of Fiscal Year	4,941,995				
<b>Fund Balance - End Of Year</b>		<b>\$4,674,105</b>				

Amounts Expressed in Whole Dollars		<u>Capital Reserve (690.</u> <u>1850)</u> <u>(31)</u>	<u>Capital Reserve (1431)</u> <u>(32)</u>	<u>Other Capital Projects</u> <u>Fund</u> <u>(39)</u>	<u>Debt Service</u> <u>(40)</u>	<u>Permanent</u> <u>(90)</u>
<b>Special And Extraordinary Items</b>						
9920	Special Items – Gains					
9930	Extraordinary Items – Gains					
5520	Special Items – Losses					
5530	Extraordinary Items – Losses					
<b>Net Change In Fund Balances</b>			<b>(\$367,833)</b>	<b>\$10,309,123</b>		
<b>Fund Balance</b>						
0001	Fund Balance - Beginning of Fiscal Year		1,815,525			
<b>Fund Balance - End Of Year</b>			<b>\$1,447,692</b>	<b>\$10,309,123</b>		

Amounts Expressed in Whole Dollars		<u>Total Governmental Funds</u>
<b>Special And Extraordinary Items</b>		
9920	Special Items – Gains	
9930	Extraordinary Items – Gains	
5520	Special Items – Losses	
5530	Extraordinary Items – Losses	
<b>Net Change In Fund Balances</b>		<b>\$9,673,400</b>
<b>Fund Balance</b>		
0001	Fund Balance - Beginning of Fiscal Year	6,757,520
<b>Fund Balance - End Of Year</b>		<b>\$16,430,920</b>

LEA : 108561803      Conemaugh Township Area SD

Printed 11/13/2024 8:24:53 AM

Amounts Expressed in Whole Dollars	<u>Food Service</u> <u>(51)</u>	<u>Child Care</u> <u>Operations</u> <u>(52)</u>	<u>Other Enterprise</u> <u>(58)</u>	<u>TOTAL</u>	<u>Internal Service</u> <u>(60)</u>
<b>Assets And Deferred Outflows Of Resources</b>					
<b>Current Assets</b>					
0100 Cash and Cash Equivalents	270,646			270,646	
0110 Investments					
0130 Due From Other Funds	112,025			112,025	
0141 Due From Other Governments					
0142 State Revenue Receivable					
0143 Federal Revenue Receivable					
0146 Due from Primary Government					
0147 Due from Component Unit					
0150 Other Receivables					
0170 Inventories	38,554			38,554	
0180 Prepaid Expenses (Expenditures)					
0190 Other Current Assets					
<b>Total Current Assets</b>	<b>\$421,225</b>			<b>\$421,225</b>	
<b>Noncurrent Assets</b>					
0211 Land					
0212 Site Improvements (Net)					
0220 Buildings and Building Improvements (Net)					
0230 Tangible Property and Intangible Right-To-Use Assets (Net)	916,125			916,125	
0250 Construction in Progress					
0260 Long Term Prepayments					
0290 Other Noncurrent Assets					
<b>Total Noncurrent Assets</b>	<b>\$916,125</b>			<b>\$916,125</b>	
0910 Deferred Outflows of Resources					
<b>Total Assets And Deferred Outflows Of Resources</b>	<b>\$1,337,350</b>			<b>\$1,337,350</b>	

Amounts Expressed in Whole Dollars	<u>Food Service</u> <u>(51)</u>	<u>Child Care</u> <u>Operations</u> <u>(52)</u>	<u>Other Enterprise</u> <u>(58)</u>	<u>TOTAL</u>	<u>Internal Service</u> <u>(60)</u>
<b>Liabilities And Deferred Inflows Of Resources And Net Position</b>					
<b>Current Liabilities</b>					
0400 Due to Other Funds					
0411 Due to Other Governments					
0413 Due to Component Unit					
0420 Accounts Payable	2,885			2,885	
0430 Contracts Payable					
0440 Current Portion of Long-Term Debt	165			165	
0450 Short-Term Payables					
0461 Accrued Salaries and Benefits					
0462 Payroll Deductions and Withholding					
0480 Unearned Revenues	37,771			37,771	
0490 Other Current Liabilities					
<b>Total Current Liabilities</b>	<b>\$40,821</b>			<b>\$40,821</b>	
<b>Noncurrent Liabilities</b>					
0510 Bonds Payable					
0520 Extended-Term Financing Agreements Payable					
0530 Lease and Other Right-To-Use Obligations					
0540 Accumulated Compensated Absences	19,009			19,009	
0550 Authority Lease Obligations					
0560 Other Post-Employment Benefits (OPEB)					
0570 Net Pension Liability					
0599 Other Noncurrent Liabilities					
<b>Total Noncurrent Liabilities</b>	<b>\$19,009</b>			<b>\$19,009</b>	
<b>Total Liabilities</b>	<b>\$59,830</b>			<b>\$59,830</b>	
0950 Deferred Inflows of Resources					
<b>Net Position</b>					
0791 Net Investment in Capital Assets	916,125			916,125	
0008 Restricted Net Position (0792 – 0798)					
0799 Unrestricted Net Position	361,395			361,395	
<b>Total Net Position</b>	<b>\$1,277,520</b>			<b>\$1,277,520</b>	
<b>Total Liabilities And Deferred Inflows Of Resources And Net Position</b>	<b>\$1,337,350</b>			<b>\$1,337,350</b>	

Amounts Expressed in Whole Dollars		<u>Food Service</u> <u>(51)</u>	<u>Child Care Operations</u> <u>(52)</u>	<u>Other Enterprise</u> <u>(58)</u>	<u>TOTAL</u>	<u>Internal Service</u> <u>(60)</u>
<b>Operating Revenues</b>						
6600	Food Service Revenue	234,890			234,890	
0071	Charges for Services					
0072	Other Operating Revenue					
<b>Total Operating Revenues</b>		<b>\$234,890</b>			<b>\$234,890</b>	
<b>Operating Expenses</b>						
100	Personnel Services – Salaries	206,481			206,481	
200	Personnel Services – Employee Benefits	179,670			179,670	
300	Purchased Professional and Technical Services					
400	Purchased Property Services	2,053			2,053	
500	Other Purchased Services					
600	Supplies	451,470			451,470	
740	Depreciation	53,247			53,247	
770	Amortization Expense					
810	Dues and Fees	500			500	
880	Refunds of Prior Years' Receipts					
890	Miscellaneous Expenditures					
<b>Total Operating Expenses</b>		<b>\$893,421</b>			<b>\$893,421</b>	
<b>Operating Income (Loss)</b>		<b>(\$658,531)</b>			<b>(\$658,531)</b>	
<b>Non Operating Revenues (Expenses)</b>						
6500	Earnings on Investments	13,666			13,666	
6830	Federal Revenue from Intermediary Sources					
6920	Contributions and Donations from Private Sources					
6930	Gains or Losses on Sale of Fixed Assets					
6991	Refunds of a Prior Year Expenditure					
7000	Revenue from State Sources	145,217			145,217	
8000	Revenue from Federal Sources	466,450			466,450	
9990	Insurance Recoveries					
820	Claims and Judgments Against the LEA					
830	Interest					
<b>TOTAL Non Operating Revenues (Expenses)</b>		<b>\$625,333</b>			<b>\$625,333</b>	
<b>Income (Loss) Before Contributions And Transfers</b>		<b>(\$33,198)</b>			<b>(\$33,198)</b>	

Amounts Expressed in Whole Dollars	<u>Food Service</u> <u>(51)</u>	<u>Child Care Operations</u> <u>(52)</u>	<u>Other Enterprise</u> <u>(58)</u>	<u>TOTAL</u>	<u>Internal Service</u> <u>(60)</u>
<b>Contributions, Transfers, and Special and Extraordinary Items</b>					
5200 Interfund Transfers – Out					
5300 Transfers Out to Component Units/Primary Governments					
5520 Special Items – Losses					
5530 Extraordinary Items – Losses					
9300 Interfund Transfers - IN					
9500 Capital Contributions	445,995			445,995	
9700 Transfers IN From Component Units/Primary Governments					
9920 Special Items – Gains					
9930 Extraordinary Items – Gains					
<b>Change In Net Position</b>	<b>\$412,797</b>			<b>\$412,797</b>	
0002 Net Position - Beginning of Fiscal Year	864,723			864,723	
0003 Accounting Changes / Residual Equity Transfers					
<b>Net Position - End Of Year</b>	<b>\$1,277,520</b>			<b>\$1,277,520</b>	

LEA : 108561803      Conemaugh Township Area SD

Printed 11/13/2024 8:25:02 AM

Amounts Expressed in Whole Dollars	<u>Food Service</u> <u>(51)</u>	<u>Child Care Operations</u> <u>(52)</u>	<u>Other Enterprise</u> <u>(58)</u>	<u>TOTAL</u>	<u>Internal Service(60)</u>
<b>Cash Flows From Operating Activities</b>					
0011 Cash Receipts From Users	238,686			238,686	
0012 Cash Receipts From Assessments Made to Other Funds					
0013 Cash Receipts From Earnings on Investments					
0014 Cash Receipts From Other Operating Revenue					
0015 Cash Payments To Employees For Services	225,025			225,025	
0016 Cash Payments For Insurance Claims					
0017 Cash Payments To Suppliers For Goods and Services	620,261			620,261	
0018 Cash Payments For Other Operating Expenses					
<b>Net Cash Provided By (Used For) Operating Activities</b>	<b>(\$606,600)</b>			<b>(\$606,600)</b>	
<b>Cash Flows From Non-Capital Financing Activities</b>					
0021 Receipts From Local Sources - 6000					
0022 Receipts From State Sources - 7000	91,926			91,926	
0023 Receipts From Federal Sources -8000	455,885			455,885	
0024 Notes and Loans Received (Repaid)					
0025 Interest Paid on Notes/Loans - 5100-830					
0026 Operating Transfers In (Out)/Residual Equity Trans					
0027 Operating Transfers In (Out) Primary Government / Comp Unit					
0028 Receipts From Refund of Prior Year Expenditures - 6991					
0029 Special and Extraordinary Gains (losses)					
0030 Receipts from Insurance Recoveries -9990					
<b>Net Cash Prov By (Used for) Non-Capital Financing Activities</b>	<b>\$547,811</b>			<b>\$547,811</b>	
<b>Cash Flows From Capital and Related Financing Activities</b>					
0031 Payments For Fac Acq, Const, and Imp - 4000	(24,295)			(24,295)	
0032 Proceeds from Disposal of Capital Assets					
0033 Proceeds From Extended Term Financing - 9200					
0034 Principal Paid on Financing Agreements					
0035 Interest Paid on Financing Agreements - 5100-830					
0036 (Inc) Dec in Contributed Capital					
<b>Net Cash Prov By (Used for) Capital and Related Financing Activities</b>	<b>(\$24,295)</b>			<b>(\$24,295)</b>	
<b>Cash Flows From Investing Activities</b>					
0041 Earnings on Investments - 6500	13,666			13,666	
0042 Purchase of Inv Securities / Deposits to Inv Pools					
0043 Receipts From Investment Pool Withdrawals					
0044 Proceeds from Sale and Maturity of Inv Securities					

LEA : 108561803      Conemaugh Township Area SD

Printed 11/13/2024 8:25:02 AM

0045   Loans Received (Paid)

Net Cash Prov By (Used for) Investing Activities	\$13,666	\$13,666
--	----------	----------

LEA : 108561803      Conemaugh Township Area SD

Printed 11/13/2024 8:25:02 AM

	<u>Food Service</u> <u>(51)</u>	<u>Child Care Operations</u> <u>(52)</u>	<u>Other Enterprise</u> <u>(58)</u>	<u>TOTAL</u>	<u>Internal Service</u> <u>(60)</u>
<b>Net Increase (Decrease) in Cash Flows</b>	<b>(69,418)</b>			<b>(69,418)</b>	
0004 Cash and Cash Equivalents Beginning of Year	340,064			340,064	
<b>Cash and Cash Equivalents at Year End</b>	<b>\$270,646</b>			<b>\$270,646</b>	
<hr/>					
<b>Reconciliation of Operating Income (Loss) To Net Cash Provided by (Used For) Operating Activities</b>					
0005 Operating Income (Loss) per REP	(658,531)			(658,531)	
<b>Adjustments</b>					
0051 Depreciation and Net Amortization	53,247			53,247	
0052 Provision for Uncollectible Accounts					
0053 Other Adjustments					
<b>Effect of Changes in Assets, Liabilities, Deferred Outflows and Deferred Inflows</b>					
0054 (Inc) Dec In Accounts Receivable (0120-0150)					
0055 Advances to Other Funds					
0056 (Inc) Dec in Inventories (0170)	10,847			10,847	
0057 (Inc) Dec in Prepaid Expenses (0180)					
0058 (Inc) Dec in Other Current or Noncurrent Assets					
0064 Deferred Outflows (0910)					
0059 Inc (Dec) in Accounts Payable (0400-0450)	2,585			2,585	
0060 Inc (Dec) in Accrued Salaries/Benefits (0461)	(18,544)			(18,544)	
0065 Inc (Dec) in Net Pension Liabilities (0570)					
0066 Inc (Dec) in Other Postemp Benefit Oblig (0560)					
0061 Inc (Dec) in Payroll Deductions/Withholding (0462)					
0062 Inc (Dec) in Unearned Revenue (0480)	3,796			3,796	
0063 Inc (Dec) in Other Current or Noncurrent Liabilities					
0067 Deferred Inflows (0950)					
<b>Total Adjustments</b>	<b>\$51,931</b>			<b>\$51,931</b>	
<b>Cash Provided By (Used for) Total</b>	<b>(\$606,600)</b>			<b>(\$606,600)</b>	
<hr/>					

COMBINED STATEMENT OF CASH FLOWS  
SCHEDULE OF NONCASH INVESTING, CAPITAL, AND FINANCING ACTIVITIES

Explanation of Transaction and Balance Sheet Effect	Amount
Capital assets financed by capital projects fund.	445,995
Total	\$445,995

LEA : 108561803     Conemaugh Township Area SD

Printed 11/13/2024 8:25:04 AM

Amounts Expressed in Whole Dollars		<u>Private Purpose Trust</u> <u>(71)</u>	<u>Investment Trust</u> <u>(72)</u>	<u>Pension Trust</u> <u>(73)</u>	<u>Student Activity Custodial</u> <u>(81)</u>
<b>Assets And Deferred Outflows Of Resources</b>					
<b>Assets</b>					
0100	Cash and Cash Equivalents				87,290
0110	Investments				
0130	Due From Other Funds				
0140	Due from Other Governments, Primary Government and Component Units				
0150	Other Receivables				
0170	Inventories				
0180	Prepaid Expenses (Expenditures)				
0190	Other Current Assets				
0220	Buildings and Building Improvements (Net)				
0230	Tangible Property and Intangible Right-To-Use Assets (Net)				
<b>Total Assets</b>					<b>\$87,290</b>
0910	Deferred Outflows of Resources				
<b>Total Assets And Deferred Outflows Of Resources</b>					<b>\$87,290</b>

LEA : 108561803     Conemaugh Township Area SD

Printed 11/13/2024 8:25:04 AM

Amounts Expressed in Whole Dollars		<u>Other Custodial</u> <u>(89)</u>	<u>Fiduciary Component Units</u> <u>(98)</u>	<u>Total Fiduciary Funds</u>
<b>Assets And Deferred Outflows Of Resources</b>				
<b>Assets</b>				
0100	Cash and Cash Equivalents			87,290
0110	Investments			
0130	Due From Other Funds			
0140	Due from Other Governments, Primary Government and Component Units			
0150	Other Receivables			
0170	Inventories			
0180	Prepaid Expenses (Expenditures)			
0190	Other Current Assets			
0220	Buildings and Building Improvements (Net)			
0230	Tangible Property and Intangible Right-To-Use Assets (Net)			
<b>Total Assets</b>				<b>\$87,290</b>
0910	Deferred Outflows of Resources			
<b>Total Assets And Deferred Outflows Of Resources</b>				<b>\$87,290</b>

LEA : 108561803     Conemaugh Township Area SD

Printed 11/13/2024 8:25:04 AM

Amounts Expressed in Whole Dollars		<u>Private Purpose Trust</u> <u>(71)</u>	<u>Investment Trust</u> <u>(72)</u>	<u>Pension Trust</u> <u>(73)</u>	<u>Student Activity Custodial</u> <u>(81)</u>
<b>Liabilities, Deferred Inflows Of Resources And Net Position</b>					
<b>Liabilities</b>					
0400	Due to Other Funds				
0410	Due to Other Governments, Primary Government and Component Units				
0420	Accounts Payable				
0430	Contracts Payable				
0450	Short-Term Payables				
0460	Payroll Accruals and Withholdings				
0480	Unearned Revenues				
0490	Other Current Liabilities				
<b>Total Liabilities</b>					
0950	Deferred Inflows of Resources				
<b>Net Position</b>					
0791	Net Investment in Capital Assets				
0009	Restricted Net Position (0792 – 0798)				87,290
0799	Unrestricted Net Position				
<b>Total Net Position</b>					<b>\$87,290</b>
<b>Total Liabilities, Deferred Inflows Of Resources And Net Position</b>					<b>\$87,290</b>

LEA : 108561803      Conemaugh Township Area SD

Printed 11/13/2024 8:25:04 AM

Amounts Expressed in Whole Dollars		<u>Other Custodial</u> <u>(89)</u>	<u>Fiduciary Component Units</u> <u>(98)</u>	<u>Total Fiduciary Funds</u>
<b>Liabilities, Deferred Inflows Of Resources And Net Position</b>				
<b>Liabilities</b>				
0400	Due to Other Funds			
0410	Due to Other Governments, Primary Government and Component Units			
0420	Accounts Payable			
0430	Contracts Payable			
0450	Short-Term Payables			
0460	Payroll Accruals and Withholdings			
0480	Unearned Revenues			
0490	Other Current Liabilities			
<b>Total Liabilities</b>				
0950	Deferred Inflows of Resources			
<b>Net Position</b>				
0791	Net Investment in Capital Assets			
0009	Restricted Net Position (0792 – 0798)			87,290
0799	Unrestricted Net Position			
<b>Total Net Position</b>				<b>\$87,290</b>
<b>Total Liabilities, Deferred Inflows Of Resources And Net Position</b>				<b>\$87,290</b>

LEA : 108561803      Conemaugh Township Area SD

Printed 11/13/2024 8:25:05 AM

Amounts Expressed in Whole Dollars	<u>Private Purpose Trust</u> <u>(71)</u>	<u>Investment Trust</u> <u>(72)</u>	<u>Pension Trust</u> <u>(73)</u>	<u>Student Activity</u> <u>Custodial</u> <u>(81)</u>	<u>Other Custodial</u> <u>(89)</u>	<u>Fiduciary Component</u> <u>Units</u> <u>(98)</u>
<b>Additions</b>						
0091 Gifts and Contributions				10,315		
0095 Net Investment Earnings				4,052		
0092 Other Additions				111,942		
<b>Deductions</b>						
0093 Scholarships Awarded						
0094 Other Deductions				121,939		
<b>Change In Net Position</b>				<b>\$4,370</b>		
0006 Net Position – Beginning of Fiscal Year				82,920		
0007 Net Position Held in Trust for Pension Benefits						
<b>Net Position - End of Fiscal Year</b>				<b>\$87,290</b>		

LEA : 108561803     Conemaugh Township Area SD

Printed 11/13/2024 8:25:05 AM

Amounts Expressed in Whole Dollars		<u>Total Fiduciary</u>
		<u>Funds</u>
<b>Additions</b>		
0091	Gifts and Contributions	10,315
0095	Net Investment Earnings	4,052
0092	Other Additions	111,942
<b>Deductions</b>		
0093	Scholarships Awarded	
0094	Other Deductions	121,939
<b>Change In Net Position</b>		<b>\$4,370</b>
0006	Net Position – Beginning of Fiscal Year	82,920
0007	Net Position Held in Trust for Pension Benefits	
<b>Net Position - End of Fiscal Year</b>		<b>\$87,290</b>

	Revenue Reported In Current Year	Current Year Tax Accrual	Prior Year Tax Accrual	Taxes Collected In Current Year
<b>Revenue from Local Sources</b>				
6111 Current Real Estate Taxes	2,628,586.51			2,628,586.51
6112 Interim Real Estate Taxes	11,776.62			11,776.62
6113 Public Utility Realty Taxes	3,553.23			3,553.23
6114 Payments in Lieu of Current Taxes - State / Local	109.56			109.56
6120 Current Per Capita Taxes, Section 679	13,718.85			13,718.85
6141 Current Act 511 Per Capita Taxes	13,424.60			13,424.60
6143 Current Act 511 Local Services Taxes	6,684.54	61.30	149.07	6,772.31
6151 Current Act 511 Earned Income Taxes	864,529.85	7,918.66	9,700.72	866,311.91
6152 Current Act 511 Occupation Taxes	45,882.75			45,882.75
6153 Current Act 511 Real Estate Transfer Taxes	76,980.51	4,971.00	4,242.75	76,252.26
6411 Delinquent Real Estate Taxes	302,867.57	67,039.65	148,238.74	384,066.66
6420 Delinquent Per Capita Taxes, Section 679	1,985.50	85.25	89.75	1,990.00
6440 Delinquent Local Enabling Taxes - Flat Rate Assessments	1,985.50	82.50	88.00	1,991.00
6451 Delinquent Act 511 Earned Income Taxes	19,705.97	409.26	412.50	19,709.21
6500 Earnings on Investments	262,769.43			
6700 Revenues from LEA Activities	34,117.00			
6832 Federal IDEA Revenue Received as Pass Through	219,813.69			
6839 Federal Revenue Received from Other Sources	107,175.09			
6910 Rentals	2,079.00			
6920 Contributions and Donations from Private Sources	21,027.99			
6961 Transportation Services Provided Other Pennsylvania LEAs	11,827.50			
6991 Refunds of a Prior Year Expenditure	137,105.57			
6999 Other Revenues Not Specified Above	1,831.03			
<b>TOTAL Revenue from Local Sources</b>	<b>\$4,789,537.86</b>	<b>\$80,567.62</b>	<b>\$162,921.53</b>	<b>\$4,074,145.47</b>

	Revenue Reported In Current Year			
<b><u>Revenue from State Sources</u></b>				
7111 Basic Education Funding-Formula	7,123,700.60			
7160 Tuition for Orphans Subsidy	843.81			
7271 Special Education funds for School-Aged Pupils	789,082.58			
7311 Pupil Transportation Subsidy	464,113.75			
7312 Nonpublic and Charter School Pupil Transportation Subsidy	5,775.00			
7320 Rental and Sinking Fund Payments / Building Reimbursement Subsidy	96,332.76			
7330 Health Services (Medical, Dental, Nurse, Act 25)	18,965.44			
7340 State Property Tax Reduction Allocation	341,705.17			
7362 School Mental Health & Safety and Security Grants	139,645.37			
7505 Ready to Learn Block Grant	171,816.00			
7599 Other State Revenue Not Listed Elsewhere in the 7000 Series	12,702.50			
7810 State Share of Social Security and Medicare Taxes	294,212.68			
7820 State Share of Retirement Contributions	1,365,241.32			
<b>TOTAL Revenue from State Sources</b>	<b>\$10,824,136.98</b>			

	Revenue Reported In Current Year			
<b><u>Revenue from Federal Sources</u></b>				
8514 Title I - Improving the Academic Achievement of the Disadvantaged	174,604.00			
8515 Title II - Preparing, Training, and Recruiting High Quality Teachers and Principals	26,006.25			
8517 Title IV - 21st Century Schools	11,335.00			
8744 ARP ESSER - Elementary and Secondary School Emergency Relief Fund	121,068.19			
8820 Medical Assistance Reimbursement for Administrative Claiming (Quarterly) Program	2,181.60			
<b>TOTAL Revenue from Federal Sources</b>	<b>\$335,195.04</b>			

					Revenue Reported In Current Year
<b><u>Other Financing Sources</u></b>					
9220	Leases and Other Right-to-Use Arrangements				10,407.49
9400	Sale of or Compensation for Loss of Fixed Assets				57,000.00
9990	Insurance Recoveries				11,632.00
<b>TOTAL Other Financing Sources</b>					<b>\$79,039.49</b>
<b>TOTAL FROM ALL SOURCES</b>					<b>\$16,027,909.37</b>
			<b>\$80,567.62</b>	<b>\$162,921.53</b>	<b>\$4,074,145.47</b>

LEA : 108561803      Conemaugh Township Area SD

Printed 11/13/2024 8:25:09 AM

	<u>General Fund (10)</u>	<u>Student Sponsored Activity Fund (21)</u>	<u>Public Purpose Trust (27)</u>	<u>Other Compt Approved (28)</u>	<u>Athletic / Activity (29)</u>	<u>Capital Reserve (690, 1850) (31)</u>
<b>6000 Revenue from Local Sources</b>						
6111 Current Real Estate Taxes	2,628,586.51					
6112 Interim Real Estate Taxes	11,776.62					
6113 Public Utility Realty Taxes	3,553.23					
6114 Payments in Lieu of Current Taxes - State / Local	109.56					
6120 Current Per Capita Taxes, Section 679	13,718.85					
6141 Current Act 511 Per Capita Taxes	13,424.60					
6143 Current Act 511 Local Services Taxes	6,684.54					
6151 Current Act 511 Earned Income Taxes	864,529.85					
6152 Current Act 511 Occupation Taxes	45,882.75					
6153 Current Act 511 Real Estate Transfer Taxes	76,980.51					
6411 Delinquent Real Estate Taxes	302,867.57					
6420 Delinquent Per Capita Taxes, Section 679	1,985.50					
6440 Delinquent Local Enabling Taxes - Flat Rate Assessments	1,985.50					
6451 Delinquent Act 511 Earned Income Taxes	19,705.97					
6500 Earnings on Investments	262,769.43					
6700 Revenues from LEA Activities	34,117.00					
6832 Federal IDEA Revenue Received as Pass Through	219,813.69					
6839 Federal Revenue Received from Other Sources	107,175.09					
6910 Rentals	2,079.00					
6920 Contributions and Donations from Private Sources	21,027.99					
6961 Transportation Services Provided Other Pennsylvania LEAs	11,827.50					
6991 Refunds of a Prior Year Expenditure	137,105.57					
6999 Other Revenues Not Specified Above	1,831.03					
<b>6000 Total Revenue from Local Sources</b>	<b>\$4,789,537.86</b>					
<b>7000 Revenue from State Sources</b>						
7111 Basic Education Funding-Formula	7,123,700.60					
7160 Tuition for Orphans Subsidy	843.81					
7271 Special Education funds for School-Aged Pupils	789,082.58					
7311 Pupil Transportation Subsidy	464,113.75					
7312 Nonpublic and Charter School Pupil Transportation Subsidy	5,775.00					
7320 Rental and Sinking Fund Payments / Building Reimbursement Subsidy	96,332.76					
7330 Health Services (Medical, Dental, Nurse, Act 25)	18,965.44					
7340 State Property Tax Reduction Allocation	341,705.17					
7362 School Mental Health & Safety and Security Grants	139,645.37					
7505 Ready to Learn Block Grant	171,816.00					

LEA : 108561803      Conemaugh Township Area SD

Printed 11/13/2024 8:25:09 AM

	<u>Capital Reserve</u> <u>(1431) (32)</u>	<u>Other Capital</u> <u>Projects Fund (39)</u>	<u>Debt Service (40)</u>	<u>Permanent (90)</u>	<u>Total</u>
<b>6000 Revenue from Local Sources</b>					
6111 Current Real Estate Taxes					2,628,586.51
6112 Interim Real Estate Taxes					11,776.62
6113 Public Utility Realty Taxes					3,553.23
6114 Payments in Lieu of Current Taxes - State / Local					109.56
6120 Current Per Capita Taxes, Section 679					13,718.85
6141 Current Act 511 Per Capita Taxes					13,424.60
6143 Current Act 511 Local Services Taxes					6,684.54
6151 Current Act 511 Earned Income Taxes					864,529.85
6152 Current Act 511 Occupation Taxes					45,882.75
6153 Current Act 511 Real Estate Transfer Taxes					76,980.51
6411 Delinquent Real Estate Taxes					302,867.57
6420 Delinquent Per Capita Taxes, Section 679					1,985.50
6440 Delinquent Local Enabling Taxes - Flat Rate Assessments					1,985.50
6451 Delinquent Act 511 Earned Income Taxes					19,705.97
6500 Earnings on Investments	80,387.60	701.91			343,858.94
6700 Revenues from LEA Activities					34,117.00
6832 Federal IDEA Revenue Received as Pass Through					219,813.69
6839 Federal Revenue Received from Other Sources					107,175.09
6910 Rentals					2,079.00
6920 Contributions and Donations from Private Sources					21,027.99
6961 Transportation Services Provided Other Pennsylvania LEAs					11,827.50
6991 Refunds of a Prior Year Expenditure					137,105.57
6999 Other Revenues Not Specified Above					1,831.03
<b>6000 Total Revenue from Local Sources</b>	<b>\$80,387.60</b>	<b>\$701.91</b>			<b>\$4,870,627.37</b>
<b>7000 Revenue from State Sources</b>					
7111 Basic Education Funding-Formula					7,123,700.60
7160 Tuition for Orphans Subsidy					843.81
7271 Special Education funds for School-Aged Pupils					789,082.58
7311 Pupil Transportation Subsidy					464,113.75
7312 Nonpublic and Charter School Pupil Transportation Subsidy					5,775.00
7320 Rental and Sinking Fund Payments / Building Reimbursement Subsidy					96,332.76
7330 Health Services (Medical, Dental, Nurse, Act 25)					18,965.44
7340 State Property Tax Reduction Allocation					341,705.17
7362 School Mental Health & Safety and Security Grants					139,645.37
7505 Ready to Learn Block Grant					171,816.00

LEA : 108561803      Conemaugh Township Area SD

Printed 11/13/2024 8:25:09 AM

	<u>General Fund (10)</u>	<u>Student Sponsored Activity Fund (21)</u>	<u>Public Purpose Trust (27)</u>	<u>Other Compt Approved (28)</u>	<u>Athletic / Activity (29)</u>	<u>Capital Reserve (690, 1850) (31)</u>
<b>7000 Revenue from State Sources</b>						
7599 Other State Revenue Not Listed Elsewhere in the 7000 Series	12,702.50					
7810 State Share of Social Security and Medicare Taxes	294,212.68					
7820 State Share of Retirement Contributions	1,365,241.32					
<b>7000 Total Revenue from State Sources</b>	<b>\$10,824,136.98</b>					
<b>8000 Revenue from Federal Sources</b>						
8514 Title I - Improving the Academic Achievement of the Disadvantaged	174,604.00					
8515 Title II - Preparing, Training, and Recruiting High Quality Teachers and Principals	26,006.25					
8517 Title IV - 21st Century Schools	11,335.00					
8744 ARP ESSER - Elementary and Secondary School Emergency Relief Fund	121,068.19					
8820 Medical Assistance Reimbursement for Administrative Claiming (Quarterly) Program	2,181.60					
<b>8000 Total Revenue from Federal Sources</b>	<b>\$335,195.04</b>					
<b>9000 Other Financing Sources</b>						
9110 Face Value of Bonds Issued						
9220 Leases and Other Right-to-Use Arrangements	10,407.49					
9310 General Fund Transfers						
9400 Sale of or Compensation for Loss of Fixed Assets	57,000.00					
9990 Insurance Recoveries	11,632.00					
<b>9000 Total Other Financing Sources</b>	<b>\$79,039.49</b>					
<b>Total From All Sources</b>	<b>\$16,027,909.37</b>					

LEA : 108561803      Conemaugh Township Area SD

Printed 11/13/2024 8:25:09 AM

	<u>Capital Reserve</u> <u>(1431) (32)</u>	<u>Other Capital</u> <u>Projects Fund (39)</u>	<u>Debt Service (40)</u>	<u>Permanent (90)</u>	<u>Total</u>
<b>7000 Revenue from State Sources</b>					
7599 Other State Revenue Not Listed Elsewhere in the 7000 Series					12,702.50
7810 State Share of Social Security and Medicare Taxes					294,212.68
7820 State Share of Retirement Contributions					1,365,241.32
<b>7000 Total Revenue from State Sources</b>					<b>\$10,824,136.98</b>
<b>8000 Revenue from Federal Sources</b>					
8514 Title I - Improving the Academic Achievement of the Disadvantaged					174,604.00
8515 Title II - Preparing, Training, and Recruiting High Quality Teachers and Principals					26,006.25
8517 Title IV - 21st Century Schools					11,335.00
8744 ARP ESSER - Elementary and Secondary School Emergency Relief Fund					121,068.19
8820 Medical Assistance Reimbursement for Administrative Claiming (Quarterly) Program					2,181.60
<b>8000 Total Revenue from Federal Sources</b>					<b>\$335,195.04</b>
<b>9000 Other Financing Sources</b>					
9110 Face Value of Bonds Issued		11,215,000.00			11,215,000.00
9220 Leases and Other Right-to-Use Arrangements					10,407.49
9310 General Fund Transfers	57,000.00				57,000.00
9400 Sale of or Compensation for Loss of Fixed Assets					57,000.00
9990 Insurance Recoveries					11,632.00
<b>9000 Total Other Financing Sources</b>	<b>\$57,000.00</b>	<b>\$11,215,000.00</b>			<b>\$11,351,039.49</b>
<b>Total From All Sources</b>	<b>\$137,387.60</b>	<b>\$11,215,701.91</b>			<b>\$27,380,998.88</b>

LEA : 108561803     Conemaugh Township Area SD

Printed 11/13/2024 8:25:10 AM

	<u>General Fund (10)</u>	<u>Student Sponsored Activity Fund (21)</u>	<u>Public Purpose Trust (27)</u>	<u>Other Compt Approved (28)</u>	<u>Athletic / Activity (29)</u>	<u>Capital Reserve (690. 1850) (31)</u>
Revenue from Local Sources	4,789,537.86					
Revenue from State Sources	10,824,136.98					
Revenue from Federal Sources	335,195.04					
Other Financing Sources	79,039.49					
Total From All Sources	\$16,027,909.37					

LEA : 108561803     Conemaugh Township Area SD

Printed 11/13/2024 8:25:10 AM

	<u>Capital Reserve (1431)</u> <u>(32)</u>	<u>Other Capital Projects</u> <u>Fund (39)</u>	<u>Debt Service (40)</u>	<u>Permanent (90)</u>	<u>Total</u>
Revenue from Local Sources	80,387.60	701.91			4,870,627.37
Revenue from State Sources					10,824,136.98
Revenue from Federal Sources					335,195.04
Other Financing Sources	57,000.00	11,215,000.00			11,351,039.49
Total From All Sources	\$137,387.60	\$11,215,701.91			\$27,380,998.88

LEA : 108561803      Conemaugh Township Area SD

Printed 11/13/2024 8:25:13 AM

General Fund (10)

1000 Instruction	Total
100 <u>Personnel Services – Salaries</u>	
100 Personnel Services – Salaries	4,152,875.64
<b>Total Personnel Services – Salaries</b>	<b>\$4,152,875.64</b>
200 <u>Personnel Services – Employee Benefits</u>	
210 Group Insurance – Contracted Provider	776,693.71
220 Social Security Contributions	309,613.13
230 PSERS Retirement Contributions	1,363,440.25
260 Workers' Compensation	42,171.30
292 Health Savings Accounts	77,280.00
<b>Total Personnel Services – Employee Benefits</b>	<b>\$2,569,198.39</b>
300 <u>Purchased Professional and Technical Services</u>	
322 Professional Educational Services – Ius	58,733.31
323 Professional Educational Services – Other Educational Agencies	236,676.40
329 Professional Educational Services – Other	378,327.43
330 Other Professional Services	25,090.57
390 Other Purchased Professional and Technical Services	4,137.89
<b>Total Purchased Professional and Technical Services</b>	<b>\$702,965.60</b>
400 <u>Purchased Property Services</u>	
430 Repairs and Maintenance Services	1,493.49
440 Rentals	2,914.41
<b>Total Purchased Property Services</b>	<b>\$4,407.90</b>
500 <u>Other Purchased Services</u>	
510 Student Transportation Services	21,821.98
561 Tuition To Other School Districts Within the State	39,514.93
562 Tuition To Pennsylvania Charter Schools	563,965.07
564 Tuition To Career and Technology Centers	828,580.18
567 Tuition To Approved Private Schools (APS) and PA Chartered Schools for the Deaf and Blind	22,267.73
580 Travel	8,760.85
<b>Total Other Purchased Services</b>	<b>\$1,484,910.74</b>
600 <u>Supplies</u>	
610 General Supplies	153,174.01
640 Books and Periodicals	36,155.21
650 Supplies & Fees – Technology Related	29,991.08
<b>Total Supplies</b>	<b>\$219,320.30</b>
700 <u>Property</u>	
736 Technology Equipment Lease	10,407.49
752 Capital Equipment – Original and Additional	3,047.41
758 Capitalized Technology Software - Original	47,741.98
762 Capitalized Equipment - Replacement	29,550.00
<b>Total Property</b>	<b>\$90,746.88</b>
800 <u>Other Objects</u>	

LEA : 108561803     Conemaugh Township Area SD

Printed 11/13/2024 8:25:13 AM

General Fund (10)		
1000 Instruction		<u>Total</u>
800 <u>Other Objects</u>		
810 Dues and Fees		2,504.45
Total Other Objects		\$2,504.45
Total 1000 Instruction		\$9,226,929.90

LEA : 108561803      Conemaugh Township Area SD

Printed 11/13/2024 8:25:13 AM

General Fund (10)

1100 Regular Programs – Elementary / Secondary	Elementary	Secondary	Federal	Total
<b>100 Personnel Services – Salaries</b>				
100 Personnel Services – Salaries	1,468,859.02	1,822,440.64	135,373.99	3,426,673.65
<b>Total Personnel Services – Salaries</b>	<b>\$1,468,859.02</b>	<b>\$1,822,440.64</b>	<b>\$135,373.99</b>	<b>\$3,426,673.65</b>
<b>200 Personnel Services – Employee Benefits</b>				
210 Group Insurance – Contracted Provider	293,312.59	311,174.61	30,262.31	634,749.51
220 Social Security Contributions	109,519.39	136,219.78	9,351.20	255,090.37
230 PSERS Retirement Contributions	503,209.53	590,153.11	20,949.51	1,114,312.15
260 Workers' Compensation	19,106.53	20,245.29	423.09	39,774.91
292 Health Savings Accounts	32,467.50	31,500.00		63,967.50
<b>Total Personnel Services – Employee Benefits</b>	<b>\$957,615.54</b>	<b>\$1,089,292.79</b>	<b>\$60,986.11</b>	<b>\$2,107,894.44</b>
<b>300 Purchased Professional and Technical Services</b>				
322 Professional Educational Services – lus	7,877.59	7,877.60		15,755.19
323 Professional Educational Services – Other Educational Agencies		53,345.00		53,345.00
329 Professional Educational Services – Other	106,542.39	78,352.35		184,894.74
<b>Total Purchased Professional and Technical Services</b>	<b>\$114,419.98</b>	<b>\$139,574.95</b>		<b>\$253,994.93</b>
<b>400 Purchased Property Services</b>				
430 Repairs and Maintenance Services	317.49	1,176.00		1,493.49
440 Rentals	2,914.41			2,914.41
<b>Total Purchased Property Services</b>	<b>\$3,231.90</b>	<b>\$1,176.00</b>		<b>\$4,407.90</b>
<b>500 Other Purchased Services</b>				
510 Student Transportation Services	5,146.78	4,572.51		9,719.29
562 Tuition To Pennsylvania Charter Schools	130,273.17	218,936.25		349,209.42
580 Travel	1,107.65	5,108.47		6,216.12
<b>Total Other Purchased Services</b>	<b>\$136,527.60</b>	<b>\$228,617.23</b>		<b>\$365,144.83</b>
<b>600 Supplies</b>				
610 General Supplies	54,533.86	73,408.21		127,942.07
640 Books and Periodicals	16,681.08	16,518.14		33,199.22
650 Supplies & Fees – Technology Related	1,155.46	1,182.39	27,630.08	29,967.93
<b>Total Supplies</b>	<b>\$72,370.40</b>	<b>\$91,108.74</b>	<b>\$27,630.08</b>	<b>\$191,109.22</b>
<b>700 Property</b>				
736 Technology Equipment Lease	10,407.49			10,407.49
752 Capital Equipment – Original and Additional		3,047.41		3,047.41
758 Capitalized Technology Software - Original		47,741.98		47,741.98
762 Capitalized Equipment - Replacement		29,550.00		29,550.00
<b>Total Property</b>	<b>\$10,407.49</b>	<b>\$80,339.39</b>		<b>\$90,746.88</b>
<b>800 Other Objects</b>				
810 Dues and Fees	400.00	364.00		764.00
<b>Total Other Objects</b>	<b>\$400.00</b>	<b>\$364.00</b>		<b>\$764.00</b>
<b>Total 1100 Regular Programs – Elementary / Secondary</b>	<b>\$2,763,831.93</b>	<b>\$3,452,913.74</b>	<b>\$223,990.18</b>	<b>\$6,440,735.85</b>

LEA : 108561803     Conemaugh Township Area SD

Printed 11/13/2024 8:25:13 AM

General Fund (10)

1110 Regular Programs

	Elementary	Secondary	Federal	Total
<b>100 <u>Personnel Services – Salaries</u></b>				
100 Personnel Services – Salaries	1,468,859.02	1,822,440.64		3,291,299.66
<b>Total Personnel Services – Salaries</b>	<b>\$1,468,859.02</b>	<b>\$1,822,440.64</b>		<b>\$3,291,299.66</b>
<b>200 <u>Personnel Services – Employee Benefits</u></b>				
210 Group Insurance – Contracted Provider	293,312.59	311,174.61		604,487.20
220 Social Security Contributions	109,519.39	136,219.78		245,739.17
230 PSERS Retirement Contributions	503,209.53	590,153.11		1,093,362.64
260 Workers' Compensation	19,106.53	20,245.29		39,351.82
292 Health Savings Accounts	32,467.50	31,500.00		63,967.50
<b>Total Personnel Services – Employee Benefits</b>	<b>\$957,615.54</b>	<b>\$1,089,292.79</b>		<b>\$2,046,908.33</b>
<b>300 <u>Purchased Professional and Technical Services</u></b>				
322 Professional Educational Services – lus	7,877.59	7,877.60		15,755.19
323 Professional Educational Services – Other Educational Agencies		53,345.00		53,345.00
329 Professional Educational Services – Other	106,542.39	78,352.35		184,894.74
<b>Total Purchased Professional and Technical Services</b>	<b>\$114,419.98</b>	<b>\$139,574.95</b>		<b>\$253,994.93</b>
<b>400 <u>Purchased Property Services</u></b>				
430 Repairs and Maintenance Services	317.49	1,176.00		1,493.49
440 Rentals	2,914.41			2,914.41
<b>Total Purchased Property Services</b>	<b>\$3,231.90</b>	<b>\$1,176.00</b>		<b>\$4,407.90</b>
<b>500 <u>Other Purchased Services</u></b>				
510 Student Transportation Services	5,146.78	4,572.51		9,719.29
562 Tuition To Pennsylvania Charter Schools	130,273.17	218,936.25		349,209.42
580 Travel	1,107.65	5,108.47		6,216.12
<b>Total Other Purchased Services</b>	<b>\$136,527.60</b>	<b>\$228,617.23</b>		<b>\$365,144.83</b>
<b>600 <u>Supplies</u></b>				
610 General Supplies	54,533.86	73,408.21		127,942.07
640 Books and Periodicals	16,681.08	16,518.14		33,199.22
650 Supplies & Fees – Technology Related	1,155.46	1,182.39	27,630.08	29,967.93
<b>Total Supplies</b>	<b>\$72,370.40</b>	<b>\$91,108.74</b>	<b>\$27,630.08</b>	<b>\$191,109.22</b>
<b>700 <u>Property</u></b>				
736 Technology Equipment Lease	10,407.49			10,407.49
752 Capital Equipment – Original and Additional		3,047.41		3,047.41
758 Capitalized Technology Software - Original		47,741.98		47,741.98
762 Capitalized Equipment - Replacement		29,550.00		29,550.00
<b>Total Property</b>	<b>\$10,407.49</b>	<b>\$80,339.39</b>		<b>\$90,746.88</b>
<b>800 <u>Other Objects</u></b>				
810 Dues and Fees	400.00	364.00		764.00
<b>Total Other Objects</b>	<b>\$400.00</b>	<b>\$364.00</b>		<b>\$764.00</b>
<b>Total 1110 Regular Programs</b>	<b>\$2,763,831.93</b>	<b>\$3,452,913.74</b>	<b>\$27,630.08</b>	<b>\$6,244,375.75</b>

LEA : 108561803      Conemaugh Township Area SD

Printed 11/13/2024 8:25:13 AM

General Fund (10)

1190 Federally-Funded Regular Programs	<u>Elementary</u>	<u>Secondary</u>	<u>Federal</u>	<u>Total</u>
100 <u>Personnel Services – Salaries</u>				
100 Personnel Services – Salaries			135,373.99	135,373.99
Total Personnel Services – Salaries			\$135,373.99	\$135,373.99
200 <u>Personnel Services – Employee Benefits</u>				
210 Group Insurance – Contracted Provider			30,262.31	30,262.31
220 Social Security Contributions			9,351.20	9,351.20
230 PSERS Retirement Contributions			20,949.51	20,949.51
260 Workers' Compensation			423.09	423.09
Total Personnel Services – Employee Benefits			\$60,986.11	\$60,986.11
Total 1190 Federally-Funded Regular Programs			\$196,360.10	\$196,360.10

LEA : 108561803      Conemaugh Township Area SD

Printed 11/13/2024 8:25:13 AM

General Fund (10)

1200 Special Programs – Elementary / Secondary	Elementary	Secondary	Federal	Total
<b>100 Personnel Services – Salaries</b>				
100 Personnel Services – Salaries	312,909.60	245,523.37	132,358.17	690,791.14
<b>Total Personnel Services – Salaries</b>	<b>\$312,909.60</b>	<b>\$245,523.37</b>	<b>\$132,358.17</b>	<b>\$690,791.14</b>
<b>200 Personnel Services – Employee Benefits</b>				
210 Group Insurance – Contracted Provider	60,821.15	41,533.45	39,354.42	141,709.02
220 Social Security Contributions	26,232.41	20,749.33	4,871.32	51,853.06
230 PSERS Retirement Contributions	119,660.11	94,927.22	22,500.98	237,088.31
260 Workers' Compensation	1,032.88	810.44	436.29	2,279.61
292 Health Savings Accounts	7,530.00	5,782.50		13,312.50
<b>Total Personnel Services – Employee Benefits</b>	<b>\$215,276.55</b>	<b>\$163,802.94</b>	<b>\$67,163.01</b>	<b>\$446,242.50</b>
<b>300 Purchased Professional and Technical Services</b>				
322 Professional Educational Services – lus	22,125.03	20,853.09		42,978.12
323 Professional Educational Services – Other Educational Agencies	84,750.00	98,581.40		183,331.40
329 Professional Educational Services – Other	89,165.20	77,284.11		166,449.31
330 Other Professional Services	3,826.23	4,388.73	16,875.61	25,090.57
<b>Total Purchased Professional and Technical Services</b>	<b>\$199,866.46</b>	<b>\$201,107.33</b>	<b>\$16,875.61</b>	<b>\$417,849.40</b>
<b>500 Other Purchased Services</b>				
510 Student Transportation Services	8,558.00	3,544.69		12,102.69
561 Tuition To Other School Districts Within the State		29,025.00		29,025.00
562 Tuition To Pennsylvania Charter Schools	61,430.49	153,325.16		214,755.65
567 Tuition To Approved Private Schools (APS) and PA Chartered Schools for the Deaf and Blind		22,267.73		22,267.73
580 Travel	543.36	601.37		1,144.73
<b>Total Other Purchased Services</b>	<b>\$70,531.85</b>	<b>\$208,763.95</b>		<b>\$279,295.80</b>
<b>600 Supplies</b>				
610 General Supplies	9,562.92	10,492.88	3,284.04	23,339.84
640 Books and Periodicals	1,674.39	241.35		1,915.74
650 Supplies & Fees – Technology Related		23.15		23.15
<b>Total Supplies</b>	<b>\$11,237.31</b>	<b>\$10,757.38</b>	<b>\$3,284.04</b>	<b>\$25,278.73</b>
<b>800 Other Objects</b>				
810 Dues and Fees	897.75	842.70		1,740.45
<b>Total Other Objects</b>	<b>\$897.75</b>	<b>\$842.70</b>		<b>\$1,740.45</b>
<b>Total 1200 Special Programs – Elementary / Secondary</b>	<b>\$810,719.52</b>	<b>\$830,797.67</b>	<b>\$219,680.83</b>	<b>\$1,861,198.02</b>

LEA : 108561803      Conemaugh Township Area SD

Printed 11/13/2024 8:25:13 AM

General Fund (10)

1210 Life Skills Support

	<u>Elementary</u>	<u>Secondary</u>	<u>Federal</u>	<u>Total</u>
<b>100 <u>Personnel Services – Salaries</u></b>				
100 Personnel Services – Salaries	26,916.06		46,139.52	73,055.58
<b>Total Personnel Services – Salaries</b>	<b>\$26,916.06</b>		<b>\$46,139.52</b>	<b>\$73,055.58</b>
<b>200 <u>Personnel Services – Employee Benefits</u></b>				
210 Group Insurance – Contracted Provider	2,982.02		11,197.13	14,179.15
220 Social Security Contributions	3,101.64		2,395.89	5,497.53
230 PSERS Retirement Contributions	14,147.12		11,021.95	25,169.07
260 Workers' Compensation	91.87		149.14	241.01
292 Health Savings Accounts	1,717.50			1,717.50
<b>Total Personnel Services – Employee Benefits</b>	<b>\$22,040.15</b>		<b>\$24,764.11</b>	<b>\$46,804.26</b>
<b>300 <u>Purchased Professional and Technical Services</u></b>				
329 Professional Educational Services – Other	19,657.39	41,516.81		61,174.20
<b>Total Purchased Professional and Technical Services</b>	<b>\$19,657.39</b>	<b>\$41,516.81</b>		<b>\$61,174.20</b>
<b>600 <u>Supplies</u></b>				
610 General Supplies	99.98	2,186.52		2,286.50
640 Books and Periodicals		241.35		241.35
<b>Total Supplies</b>	<b>\$99.98</b>	<b>\$2,427.87</b>		<b>\$2,527.85</b>
<b>800 <u>Other Objects</u></b>				
810 Dues and Fees		25.00		25.00
<b>Total Other Objects</b>		<b>\$25.00</b>		<b>\$25.00</b>
<b>Total 1210 Life Skills Support</b>	<b>\$68,713.58</b>	<b>\$43,969.68</b>	<b>\$70,903.63</b>	<b>\$183,586.89</b>

LEA : 108561803     Conemaugh Township Area SD

Printed 11/13/2024 8:25:13 AM

General Fund (10)

1220 Sensory Support	Elementary	Secondary	Federal	Total
100 <u>Personnel Services – Salaries</u>				
100 Personnel Services – Salaries	43,006.58	8,933.65		51,940.23
Total Personnel Services – Salaries	\$43,006.58	\$8,933.65		\$51,940.23
200 <u>Personnel Services – Employee Benefits</u>				
210 Group Insurance – Contracted Provider	12,015.74	3,953.69		15,969.43
220 Social Security Contributions	3,215.90	658.83		3,874.73
230 PSERS Retirement Contributions	14,372.88	2,955.17		17,328.05
260 Workers' Compensation	141.96	29.51		171.47
292 Health Savings Accounts	1,125.00	375.00		1,500.00
Total Personnel Services – Employee Benefits	\$30,871.48	\$7,972.20		\$38,843.68
300 <u>Purchased Professional and Technical Services</u>				
322 Professional Educational Services – lus	21,918.50	20,790.59		42,709.09
Total Purchased Professional and Technical Services	\$21,918.50	\$20,790.59		\$42,709.09
500 <u>Other Purchased Services</u>				
580 Travel	359.36	359.35		718.71
Total Other Purchased Services	\$359.36	\$359.35		\$718.71
600 <u>Supplies</u>				
610 General Supplies	1,106.42	72.00		1,178.42
Total Supplies	\$1,106.42	\$72.00		\$1,178.42
Total 1220 Sensory Support	\$97,262.34	\$38,127.79		\$135,390.13

LEA : 108561803     Conemaugh Township Area SD

Printed 11/13/2024 8:25:13 AM

General Fund (10)

1230 Emotional Support

	<u>Elementary</u>	<u>Secondary</u>	<u>Federal</u>	<u>Total</u>
<b>100 <u>Personnel Services – Salaries</u></b>				
100 Personnel Services – Salaries	85,803.42	62,889.16	30,688.98	179,381.56
<b>Total Personnel Services – Salaries</b>	<b>\$85,803.42</b>	<b>\$62,889.16</b>	<b>\$30,688.98</b>	<b>\$179,381.56</b>
<b>200 <u>Personnel Services – Employee Benefits</u></b>				
210 Group Insurance – Contracted Provider	17,771.40	11,849.82	8,637.22	38,258.44
220 Social Security Contributions	6,921.95	5,720.37	860.40	13,502.72
230 PSERS Retirement Contributions	31,364.31	25,646.82	3,975.04	60,986.17
260 Workers' Compensation	283.00	207.40	101.01	591.41
292 Health Savings Accounts	1,695.00	1,777.50		3,472.50
<b>Total Personnel Services – Employee Benefits</b>	<b>\$58,035.66</b>	<b>\$45,201.91</b>	<b>\$13,573.67</b>	<b>\$116,811.24</b>
<b>300 <u>Purchased Professional and Technical Services</u></b>				
323 Professional Educational Services – Other Educational Agencies	84,750.00	98,581.40		183,331.40
329 Professional Educational Services – Other	11,798.96			11,798.96
<b>Total Purchased Professional and Technical Services</b>	<b>\$96,548.96</b>	<b>\$98,581.40</b>		<b>\$195,130.36</b>
<b>500 <u>Other Purchased Services</u></b>				
561 Tuition To Other School Districts Within the State		29,025.00		29,025.00
<b>Total Other Purchased Services</b>		<b>\$29,025.00</b>		<b>\$29,025.00</b>
<b>800 <u>Other Objects</u></b>				
810 Dues and Fees	222.75	222.75		445.50
<b>Total Other Objects</b>	<b>\$222.75</b>	<b>\$222.75</b>		<b>\$445.50</b>
<b>Total 1230 Emotional Support</b>	<b>\$240,610.79</b>	<b>\$235,920.22</b>	<b>\$44,262.65</b>	<b>\$520,793.66</b>

LEA : 108561803      Conemaugh Township Area SD

Printed 11/13/2024 8:25:13 AM

General Fund (10)

1240 Academic Support

	Elementary	Secondary	Federal	Total
<b>100 <u>Personnel Services – Salaries</u></b>				
100 Personnel Services – Salaries	145,581.71	173,700.56	28,173.60	347,455.87
<b>Total Personnel Services – Salaries</b>	<b>\$145,581.71</b>	<b>\$173,700.56</b>	<b>\$28,173.60</b>	<b>\$347,455.87</b>
<b>200 <u>Personnel Services – Employee Benefits</u></b>				
210 Group Insurance – Contracted Provider	27,315.98	24,480.18	11,222.03	63,018.19
220 Social Security Contributions	12,105.48	13,115.62	837.79	26,058.89
230 PSERS Retirement Contributions	55,688.78	60,567.39	3,960.72	120,216.89
260 Workers' Compensation	477.95	573.53	96.05	1,147.53
292 Health Savings Accounts	2,617.50	2,880.00		5,497.50
<b>Total Personnel Services – Employee Benefits</b>	<b>\$98,205.69</b>	<b>\$101,616.72</b>	<b>\$16,116.59</b>	<b>\$215,939.00</b>
<b>300 <u>Purchased Professional and Technical Services</u></b>				
322 Professional Educational Services – lus	62.50	62.50		125.00
329 Professional Educational Services – Other	57,708.85	35,767.30		93,476.15
330 Other Professional Services	3,826.23	4,388.73	16,875.61	25,090.57
<b>Total Purchased Professional and Technical Services</b>	<b>\$61,597.58</b>	<b>\$40,218.53</b>	<b>\$16,875.61</b>	<b>\$118,691.72</b>
<b>500 <u>Other Purchased Services</u></b>				
510 Student Transportation Services	8,558.00	3,544.69		12,102.69
562 Tuition To Pennsylvania Charter Schools	61,430.49	153,325.16		214,755.65
580 Travel	184.00	242.02		426.02
<b>Total Other Purchased Services</b>	<b>\$70,172.49</b>	<b>\$157,111.87</b>		<b>\$227,284.36</b>
<b>600 <u>Supplies</u></b>				
610 General Supplies	8,356.52	8,234.36	3,284.04	19,874.92
640 Books and Periodicals	1,674.39			1,674.39
650 Supplies & Fees – Technology Related		23.15		23.15
<b>Total Supplies</b>	<b>\$10,030.91</b>	<b>\$8,257.51</b>	<b>\$3,284.04</b>	<b>\$21,572.46</b>
<b>800 <u>Other Objects</u></b>				
810 Dues and Fees	675.00	594.95		1,269.95
<b>Total Other Objects</b>	<b>\$675.00</b>	<b>\$594.95</b>		<b>\$1,269.95</b>
<b>Total 1240 Academic Support</b>	<b>\$386,263.38</b>	<b>\$481,500.14</b>	<b>\$64,449.84</b>	<b>\$932,213.36</b>

LEA : 108561803      Conemaugh Township Area SD

Printed 11/13/2024 8:25:13 AM

General Fund (10)

1241 Learning Support – Public	Elementary	Secondary	Federal	Total
<b>100 Personnel Services – Salaries</b>				
100 Personnel Services – Salaries	139,870.03	159,208.42	28,173.60	327,252.05
<b>Total Personnel Services – Salaries</b>	<b>\$139,870.03</b>	<b>\$159,208.42</b>	<b>\$28,173.60</b>	<b>\$327,252.05</b>
<b>200 Personnel Services – Employee Benefits</b>				
210 Group Insurance – Contracted Provider	25,407.29	20,309.90	11,222.03	56,939.22
220 Social Security Contributions	11,683.18	12,062.09	837.79	24,583.06
230 PSERS Retirement Contributions	53,746.84	55,640.70	3,960.72	113,348.26
260 Workers' Compensation	459.01	525.69	96.05	1,080.75
292 Health Savings Accounts	2,430.00	2,505.00		4,935.00
<b>Total Personnel Services – Employee Benefits</b>	<b>\$93,726.32</b>	<b>\$91,043.38</b>	<b>\$16,116.59</b>	<b>\$200,886.29</b>
<b>300 Purchased Professional and Technical Services</b>				
322 Professional Educational Services – lus	62.50	62.50		125.00
329 Professional Educational Services – Other	57,708.85	35,767.30		93,476.15
330 Other Professional Services	3,826.23	4,388.73	16,875.61	25,090.57
<b>Total Purchased Professional and Technical Services</b>	<b>\$61,597.58</b>	<b>\$40,218.53</b>	<b>\$16,875.61</b>	<b>\$118,691.72</b>
<b>500 Other Purchased Services</b>				
510 Student Transportation Services	8,558.00	3,544.69		12,102.69
562 Tuition To Pennsylvania Charter Schools	61,430.49	153,325.16		214,755.65
580 Travel	184.00	114.02		298.02
<b>Total Other Purchased Services</b>	<b>\$70,172.49</b>	<b>\$156,983.87</b>		<b>\$227,156.36</b>
<b>600 Supplies</b>				
610 General Supplies	8,118.52	8,234.36	3,284.04	19,636.92
640 Books and Periodicals	1,674.39			1,674.39
650 Supplies & Fees – Technology Related		23.15		23.15
<b>Total Supplies</b>	<b>\$9,792.91</b>	<b>\$8,257.51</b>	<b>\$3,284.04</b>	<b>\$21,334.46</b>
<b>800 Other Objects</b>				
810 Dues and Fees	275.00	194.95		469.95
<b>Total Other Objects</b>	<b>\$275.00</b>	<b>\$194.95</b>		<b>\$469.95</b>
<b>Total 1241 Learning Support – Public</b>	<b>\$375,434.33</b>	<b>\$455,906.66</b>	<b>\$64,449.84</b>	<b>\$895,790.83</b>

LEA : 108561803     Conemaugh Township Area SD

Printed 11/13/2024 8:25:13 AM

General Fund (10)

1243 Gifted Support

	<u>Elementary</u>	<u>Secondary</u>	<u>Federal</u>	<u>Total</u>
<b>100 <u>Personnel Services – Salaries</u></b>				
100 Personnel Services – Salaries	5,711.68	14,492.14		20,203.82
<b>Total Personnel Services – Salaries</b>	<b>\$5,711.68</b>	<b>\$14,492.14</b>		<b>\$20,203.82</b>
<b>200 <u>Personnel Services – Employee Benefits</u></b>				
210 Group Insurance – Contracted Provider	1,908.69	4,170.28		6,078.97
220 Social Security Contributions	422.30	1,053.53		1,475.83
230 PSERS Retirement Contributions	1,941.94	4,926.69		6,868.63
260 Workers' Compensation	18.94	47.84		66.78
292 Health Savings Accounts	187.50	375.00		562.50
<b>Total Personnel Services – Employee Benefits</b>	<b>\$4,479.37</b>	<b>\$10,573.34</b>		<b>\$15,052.71</b>
<b>500 <u>Other Purchased Services</u></b>				
580 Travel		128.00		128.00
<b>Total Other Purchased Services</b>		<b>\$128.00</b>		<b>\$128.00</b>
<b>600 <u>Supplies</u></b>				
610 General Supplies	238.00			238.00
<b>Total Supplies</b>	<b>\$238.00</b>			<b>\$238.00</b>
<b>800 <u>Other Objects</u></b>				
810 Dues and Fees	400.00	400.00		800.00
<b>Total Other Objects</b>	<b>\$400.00</b>	<b>\$400.00</b>		<b>\$800.00</b>
<b>Total 1243 Gifted Support</b>	<b>\$10,829.05</b>	<b>\$25,593.48</b>		<b>\$36,422.53</b>

LEA : 108561803      Conemaugh Township Area SD

Printed 11/13/2024 8:25:13 AM

General Fund (10)

1270 Multi-Handicapped Support	<u>Elementary</u>	<u>Secondary</u>	<u>Federal</u>	<u>Total</u>
100 <u>Personnel Services – Salaries</u>				
100 Personnel Services – Salaries	11,601.83		27,356.07	38,957.90
Total Personnel Services – Salaries	\$11,601.83		\$27,356.07	\$38,957.90
200 <u>Personnel Services – Employee Benefits</u>				
210 Group Insurance – Contracted Provider	736.01	1,249.76	8,298.04	10,283.81
220 Social Security Contributions	887.44	1,254.51	777.24	2,919.19
230 PSERS Retirement Contributions	4,087.02	5,757.84	3,543.27	13,388.13
260 Workers' Compensation	38.10		90.09	128.19
292 Health Savings Accounts	375.00	750.00		1,125.00
Total Personnel Services – Employee Benefits	\$6,123.57	\$9,012.11	\$12,708.64	\$27,844.32
Total 1270 Multi-Handicapped Support	\$17,725.40	\$9,012.11	\$40,064.71	\$66,802.22

LEA : 108561803      Conemaugh Township Area SD

Printed 11/13/2024 8:25:13 AM

General Fund (10)

1280 Early Intervention Support	<u>Elementary</u>	<u>Secondary</u>	<u>Federal</u>	<u>Total</u>
300 <u>Purchased Professional and Technical Services</u>				
322 Professional Educational Services – lus	144.03			144.03
Total Purchased Professional and Technical Services	\$144.03			\$144.03
Total 1280 Early Intervention Support	\$144.03			\$144.03

LEA : 108561803     Conemaugh Township Area SD

Printed 11/13/2024 8:25:13 AM

General Fund (10)

1290 Special Programs - Other Support	<u>Elementary</u>	<u>Secondary</u>	<u>Federal</u>	<u>Total</u>
500 <u>Other Purchased Services</u>				
567 Tuition To Approved Private Schools (APS) and PA Chartered Schools for the Deaf and Blind		22,267.73		22,267.73
Total Other Purchased Services		\$22,267.73		\$22,267.73
Total 1290 Special Programs - Other Support		\$22,267.73		\$22,267.73

LEA : 108561803      Conemaugh Township Area SD

Printed 11/13/2024 8:25:13 AM

General Fund (10)

1300 Vocational Education

<u>Elementary</u>	<u>Secondary</u>	<u>Federal</u>	<u>Total</u>
-------------------	------------------	----------------	--------------

500 Other Purchased Services

564 Tuition To Career and Technology Centers	828,580.18		828,580.18
--	------------	--	------------

<b>Total Other Purchased Services</b>	<b>\$828,580.18</b>		<b>\$828,580.18</b>
---------------------------------------	---------------------	--	---------------------

600 Supplies

640 Books and Periodicals	1,040.25		1,040.25
---------------------------	----------	--	----------

<b>Total Supplies</b>	<b>\$1,040.25</b>		<b>\$1,040.25</b>
-----------------------	-------------------	--	-------------------

<b>Total 1300 Vocational Education</b>	<b>\$829,620.43</b>		<b>\$829,620.43</b>
--	---------------------	--	---------------------

LEA : 108561803      Conemaugh Township Area SD

Printed 11/13/2024 8:25:13 AM

General Fund (10)

1400 Other Instructional Programs – Elementary / Secondary	<u>Elementary</u>	<u>Secondary</u>	<u>Federal</u>	<u>Total</u>
100 <u>Personnel Services – Salaries</u>				
100 Personnel Services – Salaries	7,834.45	27,576.40		35,410.85
Total Personnel Services – Salaries	\$7,834.45	\$27,576.40		\$35,410.85
200 <u>Personnel Services – Employee Benefits</u>				
210 Group Insurance – Contracted Provider	113.55	121.63		235.18
220 Social Security Contributions	585.26	2,084.44		2,669.70
230 PSERS Retirement Contributions	2,663.77	9,376.02		12,039.79
260 Workers' Compensation	25.87	90.91		116.78
Total Personnel Services – Employee Benefits	\$3,388.45	\$11,673.00		\$15,061.45
300 <u>Purchased Professional and Technical Services</u>				
329 Professional Educational Services – Other		26,223.38		26,223.38
Total Purchased Professional and Technical Services		\$26,223.38		\$26,223.38
500 <u>Other Purchased Services</u>				
561 Tuition To Other School Districts Within the State		10,489.93		10,489.93
Total Other Purchased Services		\$10,489.93		\$10,489.93
600 <u>Supplies</u>				
610 General Supplies	28.74			28.74
Total Supplies	\$28.74			\$28.74
Total 1400 Other Instructional Programs – Elementary / Secondary	\$11,251.64	\$75,962.71		\$87,214.35

LEA : 108561803      Conemaugh Township Area SD

Printed 11/13/2024 8:25:13 AM

General Fund (10)

1420 Summer School	<u>Elementary</u>	<u>Secondary</u>	<u>Federal</u>	<u>Total</u>
<b>100 <u>Personnel Services – Salaries</u></b>				
100 Personnel Services – Salaries	2,736.53			2,736.53
<b>Total Personnel Services – Salaries</b>	<b>\$2,736.53</b>			<b>\$2,736.53</b>
<b>200 <u>Personnel Services – Employee Benefits</u></b>				
210 Group Insurance – Contracted Provider	0.14			0.14
220 Social Security Contributions	208.33			208.33
230 PSERS Retirement Contributions	930.42			930.42
260 Workers' Compensation	9.03			9.03
<b>Total Personnel Services – Employee Benefits</b>	<b>\$1,147.92</b>			<b>\$1,147.92</b>
<b>Total 1420 Summer School</b>	<b>\$3,884.45</b>			<b>\$3,884.45</b>

LEA : 108561803      Conemaugh Township Area SD

Printed 11/13/2024 8:25:13 AM

General Fund (10)

1430 Homebound Instruction	<u>Elementary</u>	<u>Secondary</u>	<u>Federal</u>	<u>Total</u>
<b>100 <u>Personnel Services – Salaries</u></b>				
100 Personnel Services – Salaries	515.52	601.44		1,116.96
<b>Total Personnel Services – Salaries</b>	<b>\$515.52</b>	<b>\$601.44</b>		<b>\$1,116.96</b>
<b>200 <u>Personnel Services – Employee Benefits</u></b>				
210 Group Insurance – Contracted Provider	113.41	121.63		235.04
220 Social Security Contributions	38.92	45.60		84.52
230 PSERS Retirement Contributions	175.28	204.48		379.76
260 Workers' Compensation	1.70	1.99		3.69
<b>Total Personnel Services – Employee Benefits</b>	<b>\$329.31</b>	<b>\$373.70</b>		<b>\$703.01</b>
<b>Total 1430 Homebound Instruction</b>	<b>\$844.83</b>	<b>\$975.14</b>		<b>\$1,819.97</b>

LEA : 108561803      Conemaugh Township Area SD

Printed 11/13/2024 8:25:13 AM

General Fund (10)

1440 Alternative Regular Education Programs	<u>Elementary</u>	<u>Secondary</u>	<u>Federal</u>	<u>Total</u>
300 <u>Purchased Professional and Technical Services</u>				
329 Professional Educational Services – Other		26,223.38		26,223.38
Total Purchased Professional and Technical Services		\$26,223.38		\$26,223.38
500 <u>Other Purchased Services</u>				
561 Tuition To Other School Districts Within the State		10,489.93		10,489.93
Total Other Purchased Services		\$10,489.93		\$10,489.93
Total 1440 Alternative Regular Education Programs		\$36,713.31		\$36,713.31

LEA : 108561803     Conemaugh Township Area SD

Printed 11/13/2024 8:25:13 AM

General Fund (10)

1441 Adjudicated / Court-Placed Programs

<u>Elementary</u>	<u>Secondary</u>	<u>Federal</u>	<u>Total</u>
-------------------	------------------	----------------	--------------

500 Other Purchased Services

561 Tuition To Other School Districts Within the State	10,489.93		10,489.93
--	-----------	--	-----------

<b>Total Other Purchased Services</b>	<b>\$10,489.93</b>		<b>\$10,489.93</b>
---------------------------------------	--------------------	--	--------------------

<b>Total 1441 Adjudicated / Court-Placed Programs</b>	<b>\$10,489.93</b>		<b>\$10,489.93</b>
---	--------------------	--	--------------------

LEA : 108561803     Conemaugh Township Area SD

Printed 11/13/2024 8:25:13 AM

General Fund (10)

1442 Alternative Education Programs	<u>Elementary</u>	<u>Secondary</u>	<u>Federal</u>	<u>Total</u>
300 <u>Purchased Professional and Technical Services</u>				
329 Professional Educational Services – Other		26,223.38		26,223.38
Total Purchased Professional and Technical Services		\$26,223.38		\$26,223.38
Total 1442 Alternative Education Programs		\$26,223.38		\$26,223.38

LEA : 108561803      Conemaugh Township Area SD

Printed 11/13/2024 8:25:13 AM

General Fund (10)

1450 Instructional Programs Outside the Established School Day	<u>Elementary</u>	<u>Secondary</u>	<u>Federal</u>	<u>Total</u>
100 <u>Personnel Services – Salaries</u>				
100 Personnel Services – Salaries	4,582.40	3,264.96		7,847.36
Total Personnel Services – Salaries	\$4,582.40	\$3,264.96		\$7,847.36
200 <u>Personnel Services – Employee Benefits</u>				
220 Social Security Contributions	338.01	244.08		582.09
230 PSERS Retirement Contributions	1,558.07	1,110.13		2,668.20
260 Workers’ Compensation	15.14	10.69		25.83
Total Personnel Services – Employee Benefits	\$1,911.22	\$1,364.90		\$3,276.12
Total 1450 Instructional Programs Outside the Established School Day	\$6,493.62	\$4,629.86		\$11,123.48

LEA : 108561803      Conemaugh Township Area SD

Printed 11/13/2024 8:25:13 AM

General Fund (10)

1490 Additional Other Instructional Programs	<u>Elementary</u>	<u>Secondary</u>	<u>Federal</u>	<u>Total</u>
100 <u>Personnel Services – Salaries</u>				
100 Personnel Services – Salaries		23,710.00		23,710.00
Total Personnel Services – Salaries		\$23,710.00		\$23,710.00
200 <u>Personnel Services – Employee Benefits</u>				
220 Social Security Contributions		1,794.76		1,794.76
230 PSERS Retirement Contributions		8,061.41		8,061.41
260 Workers’ Compensation		78.23		78.23
Total Personnel Services – Employee Benefits		\$9,934.40		\$9,934.40
600 <u>Supplies</u>				
610 General Supplies	28.74			28.74
Total Supplies	\$28.74			\$28.74
Total 1490 Additional Other Instructional Programs	\$28.74	\$33,644.40		\$33,673.14

LEA : 108561803     Conemaugh Township Area SD

Printed 11/13/2024 8:25:13 AM

General Fund (10)

1500 Nonpublic School Programs

	<u>Elementary</u>	<u>Secondary</u>	<u>Federal</u>	<u>Total</u>
<b>300 <u>Purchased Professional and Technical Services</u></b>				
329 Professional Educational Services – Other			760.00	760.00
390 Other Purchased Professional and Technical Services			4,137.89	4,137.89
<b>Total Purchased Professional and Technical Services</b>			<b>\$4,897.89</b>	<b>\$4,897.89</b>
<b>500 <u>Other Purchased Services</u></b>				
580 Travel			1,400.00	1,400.00
<b>Total Other Purchased Services</b>			<b>\$1,400.00</b>	<b>\$1,400.00</b>
<b>600 <u>Supplies</u></b>				
610 General Supplies			1,863.36	1,863.36
<b>Total Supplies</b>			<b>\$1,863.36</b>	<b>\$1,863.36</b>
<b>Total 1500 Nonpublic School Programs</b>			<b>\$8,161.25</b>	<b>\$8,161.25</b>

LEA : 108561803      Conemaugh Township Area SD

Printed 11/13/2024 8:25:18 AM

General Fund (10)

2000 Support Services

Total

100	<u>Personnel Services – Salaries</u>	
100	Personnel Services – Salaries	1,997,973.42
Total Personnel Services – Salaries		\$1,997,973.42
200	<u>Personnel Services – Employee Benefits</u>	
210	Group Insurance – Contracted Provider	412,129.42
220	Social Security Contributions	151,603.36
230	PSERS Retirement Contributions	668,086.30
260	Workers' Compensation	6,630.79
292	Health Savings Accounts	41,044.06
299	All Other Employee Benefits	26,751.26
Total Personnel Services – Employee Benefits		\$1,306,245.19
300	<u>Purchased Professional and Technical Services</u>	
329	Professional Educational Services – Other	22,786.93
330	Other Professional Services	376,609.38
340	Technical Services	35,211.24
360	Employee Training and Development Services	2,825.00
390	Other Purchased Professional and Technical Services	11,760.79
Total Purchased Professional and Technical Services		\$449,193.34
400	<u>Purchased Property Services</u>	
410	Cleaning Services	44,165.35
420	Utility Services	162,536.10
430	Repairs and Maintenance Services	97,404.58
440	Rentals	3,361.11
Total Purchased Property Services		\$307,467.14
500	<u>Other Purchased Services</u>	
513	Contracted Carriers	879,360.34
520	Insurance – General	35,683.00
523	General Property and Liability Insurance	52,120.00
530	Communications	31,439.06
549	Other Advertising/Public Relations	5,912.88
550	Printing and Binding	2,229.40
580	Travel	9,907.49
595	IU Payments By Withholding	2,743.12
Total Other Purchased Services		\$1,019,395.29
600	<u>Supplies</u>	
610	General Supplies	157,014.80
620	Energy	106,482.36
630	Food	2,904.61
640	Books and Periodicals	17,584.98
650	Supplies & Fees – Technology Related	153,583.40
Total Supplies		\$437,570.15
700	<u>Property</u>	
752	Capital Equipment – Original and Additional	848.00

LEA : 108561803     Conemaugh Township Area SD

Printed 11/13/2024 8:25:18 AM

General Fund (10)

2000 Support Services

	<u>Total</u>
Total Property	\$848.00
800 <u>Other Objects</u>	
810 Dues and Fees	39,609.26
Total Other Objects	\$39,609.26
Total 2000 Support Services	\$5,558,301.79

LEA : 108561803      Conemaugh Township Area SD

Printed 11/13/2024 8:25:18 AM

General Fund (10)

2100 Support Services – Students	Elementary	Secondary	Federal	Total
100 <u>Personnel Services – Salaries</u>				
100 Personnel Services – Salaries	112,007.75	197,106.06		309,113.81
Total Personnel Services – Salaries	\$112,007.75	\$197,106.06		\$309,113.81
200 <u>Personnel Services – Employee Benefits</u>				
210 Group Insurance – Contracted Provider	26,353.86	59,776.50		86,130.36
220 Social Security Contributions	8,256.41	14,638.80		22,895.21
230 PSERS Retirement Contributions	38,080.29	67,011.84		105,092.13
260 Workers' Compensation	369.77	650.43		1,020.20
292 Health Savings Accounts	2,250.00	5,250.00		7,500.00
Total Personnel Services – Employee Benefits	\$75,310.33	\$147,327.57		\$222,637.90
300 <u>Purchased Professional and Technical Services</u>				
329 Professional Educational Services – Other	2,504.23	1,144.00	9,500.00	13,148.23
330 Other Professional Services				112,500.00
Total Purchased Professional and Technical Services	\$2,504.23	\$1,144.00	\$9,500.00	\$125,648.23
500 <u>Other Purchased Services</u>				
530 Communications	524.07	524.06		1,048.13
550 Printing and Binding	278.98	278.98		557.96
Total Other Purchased Services	\$803.05	\$803.04		\$1,606.09
600 <u>Supplies</u>				
610 General Supplies	700.68	5,795.15		6,495.83
650 Supplies & Fees – Technology Related	2,000.00	224.00		2,224.00
Total Supplies	\$2,700.68	\$6,019.15		\$8,719.83
800 <u>Other Objects</u>				
810 Dues and Fees	230.00	230.00		460.00
Total Other Objects	\$230.00	\$230.00		\$460.00
Total 2100 Support Services – Students	\$193,556.04	\$352,629.82	\$9,500.00	\$668,185.86

LEA : 108561803      Conemaugh Township Area SD

Printed 11/13/2024 8:25:18 AM

General Fund (10)

2120 Guidance Services	Elementary	Secondary	Federal	Total
100 <u>Personnel Services – Salaries</u>				
100 Personnel Services – Salaries	64,865.25	149,963.56		214,828.81
Total Personnel Services – Salaries	\$64,865.25	\$149,963.56		\$214,828.81
200 <u>Personnel Services – Employee Benefits</u>				
210 Group Insurance – Contracted Provider	18,450.24	51,872.88		70,323.12
220 Social Security Contributions	4,763.54	11,145.93		15,909.47
230 PSERS Retirement Contributions	22,051.82	50,983.38		73,035.20
260 Workers' Compensation	214.16	494.82		708.98
292 Health Savings Accounts	1,500.00	4,500.00		6,000.00
Total Personnel Services – Employee Benefits	\$46,979.76	\$118,997.01		\$165,976.77
300 <u>Purchased Professional and Technical Services</u>				
329 Professional Educational Services – Other	2,399.73	1,039.50		3,439.23
Total Purchased Professional and Technical Services	\$2,399.73	\$1,039.50		\$3,439.23
600 <u>Supplies</u>				
610 General Supplies	700.68	5,795.15		6,495.83
650 Supplies & Fees – Technology Related	2,000.00	224.00		2,224.00
Total Supplies	\$2,700.68	\$6,019.15		\$8,719.83
Total 2120 Guidance Services	\$116,945.42	\$276,019.22		\$392,964.64

LEA : 108561803     Conemaugh Township Area SD

Printed 11/13/2024 8:25:18 AM

General Fund (10)

2140 Psychological Services	Elementary	Secondary	Federal	Total
100 <u>Personnel Services – Salaries</u>				
100 Personnel Services – Salaries	47,142.50	47,142.50		94,285.00
Total Personnel Services – Salaries	\$47,142.50	\$47,142.50		\$94,285.00
200 <u>Personnel Services – Employee Benefits</u>				
210 Group Insurance – Contracted Provider	7,903.62	7,903.62		15,807.24
220 Social Security Contributions	3,492.87	3,492.87		6,985.74
230 PSERS Retirement Contributions	16,028.47	16,028.46		32,056.93
260 Workers' Compensation	155.61	155.61		311.22
292 Health Savings Accounts	750.00	750.00		1,500.00
Total Personnel Services – Employee Benefits	\$28,330.57	\$28,330.56		\$56,661.13
300 <u>Purchased Professional and Technical Services</u>				
329 Professional Educational Services – Other	104.50	104.50		209.00
Total Purchased Professional and Technical Services	\$104.50	\$104.50		\$209.00
500 <u>Other Purchased Services</u>				
530 Communications	524.07	524.06		1,048.13
550 Printing and Binding	278.98	278.98		557.96
Total Other Purchased Services	\$803.05	\$803.04		\$1,606.09
800 <u>Other Objects</u>				
810 Dues and Fees	230.00	230.00		460.00
Total Other Objects	\$230.00	\$230.00		\$460.00
Total 2140 Psychological Services	\$76,610.62	\$76,610.60		\$153,221.22

LEA : 108561803     Conemaugh Township Area SD

Printed 11/13/2024 8:25:18 AM

General Fund (10)

2160 Social Work Services

	<u>Elementary</u>	<u>Secondary</u>	<u>Federal</u>	<u>Total</u>
300 <u>Purchased Professional and Technical Services</u>				
329 Professional Educational Services – Other			9,500.00	9,500.00
330 Other Professional Services				112,500.00
<b>Total Purchased Professional and Technical Services</b>			<b>\$9,500.00</b>	<b>\$122,000.00</b>
<b>Total 2160 Social Work Services</b>			<b>\$9,500.00</b>	<b>\$122,000.00</b>

LEA : 108561803      Conemaugh Township Area SD

Printed 11/13/2024 8:25:18 AM

General Fund (10)

2200 Support Services – Instructional Staff	<u>Elementary</u>	<u>Secondary</u>	<u>Federal</u>	<u>Total</u>
100 <u>Personnel Services – Salaries</u>				
100 Personnel Services – Salaries	112,710.62	117,348.50		230,059.12
Total Personnel Services – Salaries	\$112,710.62	\$117,348.50		\$230,059.12
200 <u>Personnel Services – Employee Benefits</u>				
210 Group Insurance – Contracted Provider	27,786.09	27,945.78		55,731.87
220 Social Security Contributions	8,472.94	8,883.76		17,356.70
230 PSERS Retirement Contributions	38,319.30	39,895.79		78,215.09
260 Workers' Compensation	372.05	387.30		759.35
292 Health Savings Accounts	2,250.00	2,250.00		4,500.00
Total Personnel Services – Employee Benefits	\$77,200.38	\$79,362.63		\$156,563.01
300 <u>Purchased Professional and Technical Services</u>				
329 Professional Educational Services – Other	30.00			30.00
360 Employee Training and Development Services	1,050.00	1,775.00		2,825.00
390 Other Purchased Professional and Technical Services	2,394.50	2,394.50		4,789.00
Total Purchased Professional and Technical Services	\$3,474.50	\$4,169.50		\$7,644.00
500 <u>Other Purchased Services</u>				
530 Communications	300.00	300.00		600.00
580 Travel	258.58	499.18		757.76
Total Other Purchased Services	\$558.58	\$799.18		\$1,357.76
600 <u>Supplies</u>				
610 General Supplies	610.68	2,658.47		3,269.15
630 Food		410.04		410.04
640 Books and Periodicals	4,984.73	5,925.30		10,910.03
650 Supplies & Fees – Technology Related		7,507.30		7,507.30
Total Supplies	\$5,595.41	\$16,501.11		\$22,096.52
800 <u>Other Objects</u>				
810 Dues and Fees	771.85	846.85		1,618.70
Total Other Objects	\$771.85	\$846.85		\$1,618.70
Total 2200 Support Services – Instructional Staff	\$200,311.34	\$219,027.77		\$419,339.11

LEA : 108561803      Conemaugh Township Area SD

Printed 11/13/2024 8:25:18 AM

General Fund (10)

2250 School Library Services	Elementary	Secondary	Federal	Total
100 Personnel Services – Salaries				
100 Personnel Services – Salaries	60,336.00	68,783.00		129,119.00
Total Personnel Services – Salaries	\$60,336.00	\$68,783.00		\$129,119.00
200 Personnel Services – Employee Benefits				
210 Group Insurance – Contracted Provider	18,290.55	18,450.24		36,740.79
220 Social Security Contributions	4,566.52	5,261.88		9,828.40
230 PSERS Retirement Contributions	20,511.97	23,383.57		43,895.54
260 Workers' Compensation	199.14	226.98		426.12
292 Health Savings Accounts	1,500.00	1,500.00		3,000.00
Total Personnel Services – Employee Benefits	\$45,068.18	\$48,822.67		\$93,890.85
600 Supplies				
610 General Supplies	421.87	98.32		520.19
640 Books and Periodicals	4,947.05	5,887.63		10,834.68
650 Supplies & Fees – Technology Related		7,507.30		7,507.30
Total Supplies	\$5,368.92	\$13,493.25		\$18,862.17
800 Other Objects				
810 Dues and Fees	457.50	532.50		990.00
Total Other Objects	\$457.50	\$532.50		\$990.00
Total 2250 School Library Services	\$111,230.60	\$131,631.42		\$242,862.02

LEA : 108561803      Conemaugh Township Area SD

Printed 11/13/2024 8:25:18 AM

General Fund (10)

2260 Instruction and Curriculum Development Services	<u>Elementary</u>	<u>Secondary</u>	<u>Federal</u>	<u>Total</u>
100 <u>Personnel Services – Salaries</u>				
100 Personnel Services – Salaries	47,965.50	47,965.50		95,931.00
Total Personnel Services – Salaries	\$47,965.50	\$47,965.50		\$95,931.00
200 <u>Personnel Services – Employee Benefits</u>				
210 Group Insurance – Contracted Provider	9,495.54	9,495.54		18,991.08
220 Social Security Contributions	3,576.48	3,576.47		7,152.95
230 PSERS Retirement Contributions	16,308.23	16,308.22		32,616.45
260 Workers' Compensation	158.34	158.34		316.68
292 Health Savings Accounts	750.00	750.00		1,500.00
Total Personnel Services – Employee Benefits	\$30,288.59	\$30,288.57		\$60,577.16
300 <u>Purchased Professional and Technical Services</u>				
390 Other Purchased Professional and Technical Services	2,394.50	2,394.50		4,789.00
Total Purchased Professional and Technical Services	\$2,394.50	\$2,394.50		\$4,789.00
500 <u>Other Purchased Services</u>				
530 Communications	300.00	300.00		600.00
580 Travel	136.68	136.68		273.36
Total Other Purchased Services	\$436.68	\$436.68		\$873.36
600 <u>Supplies</u>				
610 General Supplies	188.81	2,560.15		2,748.96
Total Supplies	\$188.81	\$2,560.15		\$2,748.96
800 <u>Other Objects</u>				
810 Dues and Fees	45.00	45.00		90.00
Total Other Objects	\$45.00	\$45.00		\$90.00
Total 2260 Instruction and Curriculum Development Services	\$81,319.08	\$83,690.40		\$165,009.48

LEA : 108561803     Conemaugh Township Area SD

Printed 11/13/2024 8:25:18 AM

General Fund (10)

2270 Instructional Staff Professional Development Services	Elementary	Secondary	Federal	Total
<b>100 <u>Personnel Services – Salaries</u></b>				
100 Personnel Services – Salaries	3,809.12			3,809.12
<b>Total Personnel Services – Salaries</b>	<b>\$3,809.12</b>			<b>\$3,809.12</b>
<b>200 <u>Personnel Services – Employee Benefits</u></b>				
220 Social Security Contributions	284.53			284.53
230 PSERS Retirement Contributions	1,295.10			1,295.10
260 Workers’ Compensation	12.59			12.59
<b>Total Personnel Services – Employee Benefits</b>	<b>\$1,592.22</b>			<b>\$1,592.22</b>
<b>300 <u>Purchased Professional and Technical Services</u></b>				
329 Professional Educational Services – Other	30.00			30.00
360 Employee Training and Development Services	1,050.00	1,775.00		2,825.00
<b>Total Purchased Professional and Technical Services</b>	<b>\$1,080.00</b>	<b>\$1,775.00</b>		<b>\$2,855.00</b>
<b>500 <u>Other Purchased Services</u></b>				
580 Travel	121.90	362.50		484.40
<b>Total Other Purchased Services</b>	<b>\$121.90</b>	<b>\$362.50</b>		<b>\$484.40</b>
<b>600 <u>Supplies</u></b>				
630 Food		410.04		410.04
640 Books and Periodicals	37.68	37.67		75.35
<b>Total Supplies</b>	<b>\$37.68</b>	<b>\$447.71</b>		<b>\$485.39</b>
<b>800 <u>Other Objects</u></b>				
810 Dues and Fees	269.35	269.35		538.70
<b>Total Other Objects</b>	<b>\$269.35</b>	<b>\$269.35</b>		<b>\$538.70</b>
<b>Total 2270 Instructional Staff Professional Development Services</b>	<b>\$6,910.27</b>	<b>\$2,854.56</b>		<b>\$9,764.83</b>

LEA : 108561803      Conemaugh Township Area SD

Printed 11/13/2024 8:25:18 AM

General Fund (10)

2290 Other Instructional Staff Services	<u>Elementary</u>	<u>Secondary</u>	<u>Federal</u>	<u>Total</u>
100 <u>Personnel Services – Salaries</u>				
100 Personnel Services – Salaries	600.00	600.00		1,200.00
Total Personnel Services – Salaries	\$600.00	\$600.00		\$1,200.00
200 <u>Personnel Services – Employee Benefits</u>				
220 Social Security Contributions	45.41	45.41		90.82
230 PSERS Retirement Contributions	204.00	204.00		408.00
260 Workers’ Compensation	1.98	1.98		3.96
Total Personnel Services – Employee Benefits	\$251.39	\$251.39		\$502.78
Total 2290 Other Instructional Staff Services	\$851.39	\$851.39		\$1,702.78

LEA : 108561803      Conemaugh Township Area SD

Printed 11/13/2024 8:25:18 AM

General Fund (10)

2300 Support Services – Administration	Elementary	Secondary	Federal	Total
<b>100 <u>Personnel Services – Salaries</u></b>				
100 Personnel Services – Salaries	152,123.27	253,780.67		619,744.14
<b>Total Personnel Services – Salaries</b>	<b>\$152,123.27</b>	<b>\$253,780.67</b>		<b>\$619,744.14</b>
<b>200 <u>Personnel Services – Employee Benefits</u></b>				
210 Group Insurance – Contracted Provider	37,002.51	55,302.04		129,175.47
220 Social Security Contributions	11,580.36	19,067.05		46,866.44
230 PSERS Retirement Contributions	51,829.58	85,166.15		201,070.18
260 Workers' Compensation	502.00	837.46		2,045.04
292 Health Savings Accounts	3,000.00	5,900.03		11,900.03
<b>Total Personnel Services – Employee Benefits</b>	<b>\$103,914.45</b>	<b>\$166,272.73</b>		<b>\$391,057.16</b>
<b>300 <u>Purchased Professional and Technical Services</u></b>				
329 Professional Educational Services – Other				975.00
330 Other Professional Services				63,418.93
<b>Total Purchased Professional and Technical Services</b>				<b>\$64,393.93</b>
<b>500 <u>Other Purchased Services</u></b>				
520 Insurance – General		100.00		35,683.00
530 Communications	900.00	1,460.03		7,509.58
549 Other Advertising/Public Relations				5,912.88
550 Printing and Binding				1,671.44
580 Travel		952.94		4,300.88
<b>Total Other Purchased Services</b>	<b>\$900.00</b>	<b>\$2,512.97</b>		<b>\$55,077.78</b>
<b>600 <u>Supplies</u></b>				
610 General Supplies	10,362.62	2,719.39		23,897.72
630 Food				2,494.57
640 Books and Periodicals	5,604.05	669.65		6,674.95
650 Supplies & Fees – Technology Related	355.00			4,392.00
<b>Total Supplies</b>	<b>\$16,321.67</b>	<b>\$3,389.04</b>		<b>\$37,459.24</b>
<b>800 <u>Other Objects</u></b>				
810 Dues and Fees	161.00	745.00		20,447.34
<b>Total Other Objects</b>	<b>\$161.00</b>	<b>\$745.00</b>		<b>\$20,447.34</b>
<b>Total 2300 Support Services – Administration</b>	<b>\$273,420.39</b>	<b>\$426,700.41</b>		<b>\$1,188,179.59</b>

LEA : 108561803      Conemaugh Township Area SD

Printed 11/13/2024 8:25:18 AM

General Fund (10)

2310 Board Services

	<u>Elementary</u>	<u>Secondary</u>	<u>Federal</u>	<u>Total</u>
<b>100 <u>Personnel Services – Salaries</u></b>				
100 Personnel Services – Salaries				3,391.00
<b>Total Personnel Services – Salaries</b>				<b>\$3,391.00</b>
<b>200 <u>Personnel Services – Employee Benefits</u></b>				
220 Social Security Contributions				256.88
230 PSERS Retirement Contributions				1,152.87
260 Workers’ Compensation				11.18
<b>Total Personnel Services – Employee Benefits</b>				<b>\$1,420.93</b>
<b>500 <u>Other Purchased Services</u></b>				
520 Insurance – General				35,583.00
549 Other Advertising/Public Relations				5,912.88
<b>Total Other Purchased Services</b>				<b>\$41,495.88</b>
<b>600 <u>Supplies</u></b>				
630 Food				77.94
640 Books and Periodicals				28.00
<b>Total Supplies</b>				<b>\$105.94</b>
<b>800 <u>Other Objects</u></b>				
810 Dues and Fees				16,983.39
<b>Total Other Objects</b>				<b>\$16,983.39</b>
<b>Total 2310 Board Services</b>				<b>\$63,397.14</b>

LEA : 108561803      Conemaugh Township Area SD

Printed 11/13/2024 8:25:18 AM

General Fund (10)

2320 Board Treasurer Services	<u>Elementary</u>	<u>Secondary</u>	<u>Federal</u>	<u>Total</u>
100 <u>Personnel Services – Salaries</u>				
100 Personnel Services – Salaries				2,025.00
Total Personnel Services – Salaries				\$2,025.00
200 <u>Personnel Services – Employee Benefits</u>				
220 Social Security Contributions				154.92
260 Workers’ Compensation				6.69
Total Personnel Services – Employee Benefits				\$161.61
Total 2320 Board Treasurer Services				\$2,186.61

LEA : 108561803      Conemaugh Township Area SD

Printed 11/13/2024 8:25:18 AM

General Fund (10)

2330 Tax Assessment and Collection Services	<u>Elementary</u>	<u>Secondary</u>	<u>Federal</u>	<u>Total</u>
100 <u>Personnel Services – Salaries</u>				
100 Personnel Services – Salaries				23,361.00
Total Personnel Services – Salaries				\$23,361.00
200 <u>Personnel Services – Employee Benefits</u>				
220 Social Security Contributions				1,787.23
260 Workers’ Compensation				76.97
Total Personnel Services – Employee Benefits				\$1,864.20
300 <u>Purchased Professional and Technical Services</u>				
330 Other Professional Services				32,948.08
Total Purchased Professional and Technical Services				\$32,948.08
500 <u>Other Purchased Services</u>				
530 Communications				5,149.55
550 Printing and Binding				1,671.44
Total Other Purchased Services				\$6,820.99
Total 2330 Tax Assessment and Collection Services				\$64,994.27

LEA : 108561803     Conemaugh Township Area SD

Printed 11/13/2024 8:25:18 AM

General Fund (10)

2350 Legal and Accounting Services	<u>Elementary</u>	<u>Secondary</u>	<u>Federal</u>	<u>Total</u>
300 <u>Purchased Professional and Technical Services</u>				
330 Other Professional Services				30,470.85
Total Purchased Professional and Technical Services				\$30,470.85
Total 2350 Legal and Accounting Services				\$30,470.85

LEA : 108561803      Conemaugh Township Area SD

Printed 11/13/2024 8:25:18 AM

General Fund (10)

2360 Office of the Superintendent / Executive Director Services	Elementary	Secondary	Federal	Total
100 <u>Personnel Services – Salaries</u>				
100 Personnel Services – Salaries				185,063.20
Total Personnel Services – Salaries				\$185,063.20
200 <u>Personnel Services – Employee Benefits</u>				
210 Group Insurance – Contracted Provider				36,870.92
220 Social Security Contributions				14,020.00
230 PSERS Retirement Contributions				62,921.58
260 Workers' Compensation				610.74
292 Health Savings Accounts				3,000.00
Total Personnel Services – Employee Benefits				\$117,423.24
300 <u>Purchased Professional and Technical Services</u>				
329 Professional Educational Services – Other				975.00
Total Purchased Professional and Technical Services				\$975.00
500 <u>Other Purchased Services</u>				
530 Communications	300.00	300.00		600.00
580 Travel				3,347.94
Total Other Purchased Services	\$300.00	\$300.00		\$3,947.94
600 <u>Supplies</u>				
610 General Supplies				10,815.71
630 Food				2,416.63
640 Books and Periodicals				373.25
650 Supplies & Fees – Technology Related				4,037.00
Total Supplies				\$17,642.59
800 <u>Other Objects</u>				
810 Dues and Fees				2,557.95
Total Other Objects				\$2,557.95
Total 2360 Office of the Superintendent / Executive Director Services	\$300.00	\$300.00		\$327,609.92

LEA : 108561803     Conemaugh Township Area SD

Printed 11/13/2024 8:25:18 AM

General Fund (10)

2380 Office of the Principal Services	Elementary	Secondary	Federal	Total
100 <u>Personnel Services – Salaries</u>				
100 Personnel Services – Salaries	152,123.27	253,780.67		405,903.94
Total Personnel Services – Salaries	\$152,123.27	\$253,780.67		\$405,903.94
200 <u>Personnel Services – Employee Benefits</u>				
210 Group Insurance – Contracted Provider	37,002.51	55,302.04		92,304.55
220 Social Security Contributions	11,580.36	19,067.05		30,647.41
230 PSERS Retirement Contributions	51,829.58	85,166.15		136,995.73
260 Workers' Compensation	502.00	837.46		1,339.46
292 Health Savings Accounts	3,000.00	5,900.03		8,900.03
Total Personnel Services – Employee Benefits	\$103,914.45	\$166,272.73		\$270,187.18
500 <u>Other Purchased Services</u>				
520 Insurance – General		100.00		100.00
530 Communications	600.00	1,160.03		1,760.03
580 Travel		952.94		952.94
Total Other Purchased Services	\$600.00	\$2,212.97		\$2,812.97
600 <u>Supplies</u>				
610 General Supplies	10,362.62	2,719.39		13,082.01
640 Books and Periodicals	5,604.05	669.65		6,273.70
650 Supplies & Fees – Technology Related	355.00			355.00
Total Supplies	\$16,321.67	\$3,389.04		\$19,710.71
800 <u>Other Objects</u>				
810 Dues and Fees	161.00	745.00		906.00
Total Other Objects	\$161.00	\$745.00		\$906.00
Total 2380 Office of the Principal Services	\$273,120.39	\$426,400.41		\$699,520.80

LEA : 108561803      Conemaugh Township Area SD

Printed 11/13/2024 8:25:18 AM

General Fund (10)

2400 Support Services – Pupil Health	<u>Elementary</u>	<u>Secondary</u>	<u>Federal</u>	<u>Total</u>
100 <u>Personnel Services – Salaries</u>				
100 Personnel Services – Salaries				134,854.00
Total Personnel Services – Salaries				\$134,854.00
200 <u>Personnel Services – Employee Benefits</u>				
210 Group Insurance – Contracted Provider				19,659.48
220 Social Security Contributions				10,316.06
230 PSERS Retirement Contributions				45,845.07
260 Workers' Compensation				444.86
292 Health Savings Accounts				1,500.00
Total Personnel Services – Employee Benefits				\$77,765.47
300 <u>Purchased Professional and Technical Services</u>				
330 Other Professional Services			5,586.50	136,528.22
Total Purchased Professional and Technical Services			\$5,586.50	\$136,528.22
400 <u>Purchased Property Services</u>				
430 Repairs and Maintenance Services				390.00
Total Purchased Property Services				\$390.00
500 <u>Other Purchased Services</u>				
580 Travel				513.84
Total Other Purchased Services				\$513.84
600 <u>Supplies</u>				
610 General Supplies				3,411.92
Total Supplies				\$3,411.92
Total 2400 Support Services – Pupil Health			\$5,586.50	\$353,463.45

LEA : 108561803     Conemaugh Township Area SD

Printed 11/13/2024 8:25:18 AM

General Fund (10)

2420 Medical Services

<u>Elementary</u>	<u>Secondary</u>	<u>Federal</u>	<u>Total</u>
-------------------	------------------	----------------	--------------

300 Purchased Professional and Technical Services

330 Other Professional Services		2,187.50	2,187.50
---------------------------------	--	----------	----------

<b>Total Purchased Professional and Technical Services</b>		<b>\$2,187.50</b>	<b>\$2,187.50</b>
--	--	-------------------	-------------------

600 Supplies

610 General Supplies			654.83
----------------------	--	--	--------

<b>Total Supplies</b>			<b>\$654.83</b>
-----------------------	--	--	-----------------

<b>Total 2420 Medical Services</b>		<b>\$2,187.50</b>	<b>\$2,842.33</b>
------------------------------------	--	-------------------	-------------------

LEA : 108561803      Conemaugh Township Area SD

Printed 11/13/2024 8:25:18 AM

General Fund (10)

2440 Nursing Services

	<u>Elementary</u>	<u>Secondary</u>	<u>Federal</u>	<u>Total</u>
100 <u>Personnel Services – Salaries</u>				
100 Personnel Services – Salaries				134,854.00
Total Personnel Services – Salaries				\$134,854.00
200 <u>Personnel Services – Employee Benefits</u>				
210 Group Insurance – Contracted Provider				19,659.48
220 Social Security Contributions				10,316.06
230 PSERS Retirement Contributions				45,845.07
260 Workers' Compensation				444.86
292 Health Savings Accounts				1,500.00
Total Personnel Services – Employee Benefits				\$77,765.47
300 <u>Purchased Professional and Technical Services</u>				
330 Other Professional Services				6,500.00
Total Purchased Professional and Technical Services				\$6,500.00
400 <u>Purchased Property Services</u>				
430 Repairs and Maintenance Services				390.00
Total Purchased Property Services				\$390.00
500 <u>Other Purchased Services</u>				
580 Travel				513.84
Total Other Purchased Services				\$513.84
600 <u>Supplies</u>				
610 General Supplies				2,757.09
Total Supplies				\$2,757.09
Total 2440 Nursing Services				\$222,780.40

LEA : 108561803     Conemaugh Township Area SD

Printed 11/13/2024 8:25:18 AM

General Fund (10)

2490 Other Health Services

<u>Elementary</u>	<u>Secondary</u>	<u>Federal</u>	<u>Total</u>
-------------------	------------------	----------------	--------------

300 Purchased Professional and Technical Services

330 Other Professional Services		3,399.00	127,840.72
---------------------------------	--	----------	------------

<b>Total Purchased Professional and Technical Services</b>		<b>\$3,399.00</b>	<b>\$127,840.72</b>
--	--	-------------------	---------------------

<b>Total 2490 Other Health Services</b>		<b>\$3,399.00</b>	<b>\$127,840.72</b>
---	--	-------------------	---------------------

LEA : 108561803      Conemaugh Township Area SD

Printed 11/13/2024 8:25:18 AM

<b>General Fund (10)</b>				
<b>2500 Support Services – Business</b>	<b><u>Elementary</u></b>	<b><u>Secondary</u></b>	<b><u>Federal</u></b>	<b><u>Total</u></b>
<b>100 <u>Personnel Services – Salaries</u></b>				
100 Personnel Services – Salaries				242,047.82
<b>Total Personnel Services – Salaries</b>				<b>\$242,047.82</b>
<b>200 <u>Personnel Services – Employee Benefits</u></b>				
210 Group Insurance – Contracted Provider				28,821.81
220 Social Security Contributions				19,110.20
230 PSERS Retirement Contributions				82,296.42
260 Workers' Compensation				836.38
292 Health Savings Accounts				4,500.00
299 All Other Employee Benefits				26,751.26
<b>Total Personnel Services – Employee Benefits</b>				<b>\$162,316.07</b>
<b>300 <u>Purchased Professional and Technical Services</u></b>				
330 Other Professional Services				40,409.45
340 Technical Services				4,730.00
390 Other Purchased Professional and Technical Services				497.50
<b>Total Purchased Professional and Technical Services</b>				<b>\$45,636.95</b>
<b>500 <u>Other Purchased Services</u></b>				
530 Communications				14,975.28
580 Travel				2,196.58
<b>Total Other Purchased Services</b>				<b>\$17,171.86</b>
<b>600 <u>Supplies</u></b>				
610 General Supplies				6,022.32
650 Supplies & Fees – Technology Related				14,392.75
<b>Total Supplies</b>				<b>\$20,415.07</b>
<b>800 <u>Other Objects</u></b>				
810 Dues and Fees				14,880.22
<b>Total Other Objects</b>				<b>\$14,880.22</b>
<b>Total 2500 Support Services – Business</b>				<b>\$502,467.99</b>

LEA : 108561803      Conemaugh Township Area SD

Printed 11/13/2024 8:25:18 AM

General Fund (10)

2510 Fiscal Services

	<u>Elementary</u>	<u>Secondary</u>	<u>Federal</u>	<u>Total</u>
<b>100 <u>Personnel Services – Salaries</u></b>				
100 Personnel Services – Salaries				242,047.82
<b>Total Personnel Services – Salaries</b>				<b>\$242,047.82</b>
<b>200 <u>Personnel Services – Employee Benefits</u></b>				
210 Group Insurance – Contracted Provider				28,821.81
220 Social Security Contributions				19,110.20
230 PSERS Retirement Contributions				82,296.42
260 Workers' Compensation				836.38
292 Health Savings Accounts				4,500.00
299 All Other Employee Benefits				26,751.26
<b>Total Personnel Services – Employee Benefits</b>				<b>\$162,316.07</b>
<b>300 <u>Purchased Professional and Technical Services</u></b>				
330 Other Professional Services				27,543.02
390 Other Purchased Professional and Technical Services				349.00
<b>Total Purchased Professional and Technical Services</b>				<b>\$27,892.02</b>
<b>500 <u>Other Purchased Services</u></b>				
530 Communications				1,904.96
580 Travel				2,196.58
<b>Total Other Purchased Services</b>				<b>\$4,101.54</b>
<b>600 <u>Supplies</u></b>				
610 General Supplies				1,245.98
<b>Total Supplies</b>				<b>\$1,245.98</b>
<b>800 <u>Other Objects</u></b>				
810 Dues and Fees				3,765.79
<b>Total Other Objects</b>				<b>\$3,765.79</b>
<b>Total 2510 Fiscal Services</b>				<b>\$441,369.22</b>

LEA : 108561803      Conemaugh Township Area SD

Printed 11/13/2024 8:25:18 AM

General Fund (10)

2511 Supervision of Fiscal Services - Head of Component	<u>Elementary</u>	<u>Secondary</u>	<u>Federal</u>	<u>Total</u>
100 <u>Personnel Services – Salaries</u>				
100 Personnel Services – Salaries				242,047.82
Total Personnel Services – Salaries				\$242,047.82
200 <u>Personnel Services – Employee Benefits</u>				
210 Group Insurance – Contracted Provider				28,821.81
220 Social Security Contributions				19,110.20
230 PSERS Retirement Contributions				82,296.42
260 Workers' Compensation				836.38
292 Health Savings Accounts				4,500.00
299 All Other Employee Benefits				26,751.26
Total Personnel Services – Employee Benefits				\$162,316.07
300 <u>Purchased Professional and Technical Services</u>				
330 Other Professional Services				19,568.02
390 Other Purchased Professional and Technical Services				349.00
Total Purchased Professional and Technical Services				\$19,917.02
500 <u>Other Purchased Services</u>				
530 Communications				1,904.96
580 Travel				2,196.58
Total Other Purchased Services				\$4,101.54
600 <u>Supplies</u>				
610 General Supplies				1,245.98
Total Supplies				\$1,245.98
800 <u>Other Objects</u>				
810 Dues and Fees				3,765.79
Total Other Objects				\$3,765.79
Total 2511 Supervision of Fiscal Services - Head of Component				\$433,394.22

LEA : 108561803     Conemaugh Township Area SD

Printed 11/13/2024 8:25:18 AM

General Fund (10)

2517 Property Accounting Services	<u>Elementary</u>	<u>Secondary</u>	<u>Federal</u>	<u>Total</u>
300 <u>Purchased Professional and Technical Services</u>				
330 Other Professional Services				7,975.00
Total Purchased Professional and Technical Services				\$7,975.00
Total 2517 Property Accounting Services				\$7,975.00

<u>Elementary</u>	<u>Secondary</u>	<u>Federal</u>	<u>Total</u>
-------------------	------------------	----------------	--------------

<u>Elementary</u>	<u>Secondary</u>	<u>Federal</u>	<u>Total</u>
-------------------	------------------	----------------	--------------

	12,866.43
	4,730.00
	148.50

**\$17,744.93**

13,070.32

**\$13,070.32**

	4,776.34
	14,392.75

**\$19,169.09**

11,114.43

**\$11,114.43**

**\$61,098.77**

LEA : 108561803      Conemaugh Township Area SD

Printed 11/13/2024 8:25:18 AM

General Fund (10)

2600 Operation and Maintenance of Plant Services	<u>Elementary</u>	<u>Secondary</u>	<u>Federal</u>	<u>Total</u>
<b>100 <u>Personnel Services – Salaries</u></b>				
100 Personnel Services – Salaries				462,154.53
<b>Total Personnel Services – Salaries</b>				<b>\$462,154.53</b>
<b>200 <u>Personnel Services – Employee Benefits</u></b>				
210 Group Insurance – Contracted Provider				92,610.43
220 Social Security Contributions				35,058.75
230 PSERS Retirement Contributions				155,567.41
260 Workers' Compensation				1,524.96
292 Health Savings Accounts				11,144.03
<b>Total Personnel Services – Employee Benefits</b>				<b>\$295,905.58</b>
<b>300 <u>Purchased Professional and Technical Services</u></b>				
330 Other Professional Services				23,752.78
390 Other Purchased Professional and Technical Services				5,549.29
<b>Total Purchased Professional and Technical Services</b>				<b>\$29,302.07</b>
<b>400 <u>Purchased Property Services</u></b>				
410 Cleaning Services				44,165.35
420 Utility Services				162,536.10
430 Repairs and Maintenance Services				97,014.58
440 Rentals				3,361.11
<b>Total Purchased Property Services</b>				<b>\$307,077.14</b>
<b>500 <u>Other Purchased Services</u></b>				
523 General Property and Liability Insurance				52,120.00
530 Communications				7,306.07
580 Travel				1,795.71
<b>Total Other Purchased Services</b>				<b>\$61,221.78</b>
<b>600 <u>Supplies</u></b>				
610 General Supplies	38,765.19	51,641.47		90,406.66
620 Energy				106,482.36
<b>Total Supplies</b>	<b>\$38,765.19</b>	<b>\$51,641.47</b>		<b>\$196,889.02</b>
<b>700 <u>Property</u></b>				
752 Capital Equipment – Original and Additional				848.00
<b>Total Property</b>				<b>\$848.00</b>
<b>800 <u>Other Objects</u></b>				
810 Dues and Fees				2,203.00
<b>Total Other Objects</b>				<b>\$2,203.00</b>
<b>Total 2600 Operation and Maintenance of Plant Services</b>	<b>\$38,765.19</b>	<b>\$51,641.47</b>		<b>\$1,355,601.12</b>

LEA : 108561803     Conemaugh Township Area SD

Printed 11/13/2024 8:25:18 AM

General Fund (10)

2610 Supervision of Operation and Maintenance of Plant Services	<u>Elementary</u>	<u>Secondary</u>	<u>Federal</u>	<u>Total</u>
100 <u>Personnel Services – Salaries</u>				
100 Personnel Services – Salaries				53,500.00
Total Personnel Services – Salaries				\$53,500.00
200 <u>Personnel Services – Employee Benefits</u>				
210 Group Insurance – Contracted Provider				14,980.35
220 Social Security Contributions				4,017.64
230 PSERS Retirement Contributions				18,189.89
260 Workers' Compensation				176.54
292 Health Savings Accounts				1,500.00
Total Personnel Services – Employee Benefits				\$38,864.42
500 <u>Other Purchased Services</u>				
530 Communications				600.00
580 Travel				579.23
Total Other Purchased Services				\$1,179.23
600 <u>Supplies</u>				
610 General Supplies	21,669.82	21,669.82		43,339.64
Total Supplies	\$21,669.82	\$21,669.82		\$43,339.64
Total 2610 Supervision of Operation and Maintenance of Plant Services	\$21,669.82	\$21,669.82		\$136,883.29

LEA : 108561803      Conemaugh Township Area SD

Printed 11/13/2024 8:25:18 AM

General Fund (10)

2611 Supervision of Operation and Maintenance of Plant Services – Head of Component	<u>Elementary</u>	<u>Secondary</u>	<u>Federal</u>	<u>Total</u>
100 <u>Personnel Services – Salaries</u>				
100 Personnel Services – Salaries				53,500.00
Total Personnel Services – Salaries				\$53,500.00
200 <u>Personnel Services – Employee Benefits</u>				
210 Group Insurance – Contracted Provider				14,980.35
220 Social Security Contributions				4,017.64
230 PSERS Retirement Contributions				18,189.89
260 Workers' Compensation				176.54
292 Health Savings Accounts				1,500.00
Total Personnel Services – Employee Benefits				\$38,864.42
500 <u>Other Purchased Services</u>				
530 Communications				600.00
580 Travel				579.23
Total Other Purchased Services				\$1,179.23
600 <u>Supplies</u>				
610 General Supplies	21,669.82	21,669.82		43,339.64
Total Supplies	\$21,669.82	\$21,669.82		\$43,339.64
Total 2611 Supervision of Operation and Maintenance of Plant Services – Head of Component	\$21,669.82	\$21,669.82		\$136,883.29

LEA : 108561803      Conemaugh Township Area SD

Printed 11/13/2024 8:25:18 AM

General Fund (10)

2620 Operation of Buildings Services	Elementary	Secondary	Federal	Total
100 <u>Personnel Services – Salaries</u>				
100 Personnel Services – Salaries				344,792.03
Total Personnel Services – Salaries				\$344,792.03
200 <u>Personnel Services – Employee Benefits</u>				
210 Group Insurance – Contracted Provider				77,572.62
220 Social Security Contributions				26,155.62
230 PSERS Retirement Contributions				115,664.35
260 Workers' Compensation				1,137.61
292 Health Savings Accounts				9,644.03
Total Personnel Services – Employee Benefits				\$230,174.23
300 <u>Purchased Professional and Technical Services</u>				
330 Other Professional Services				23,752.78
Total Purchased Professional and Technical Services				\$23,752.78
400 <u>Purchased Property Services</u>				
410 Cleaning Services				44,165.35
420 Utility Services				162,536.10
430 Repairs and Maintenance Services				97,014.58
440 Rentals				3,361.11
Total Purchased Property Services				\$307,077.14
500 <u>Other Purchased Services</u>				
523 General Property and Liability Insurance				52,120.00
530 Communications				6,706.07
580 Travel				414.22
Total Other Purchased Services				\$59,240.29
600 <u>Supplies</u>				
610 General Supplies	13,081.45	29,351.65		42,433.10
620 Energy				106,482.36
Total Supplies	\$13,081.45	\$29,351.65		\$148,915.46
700 <u>Property</u>				
752 Capital Equipment – Original and Additional				848.00
Total Property				\$848.00
800 <u>Other Objects</u>				
810 Dues and Fees				1,558.00
Total Other Objects				\$1,558.00
Total 2620 Operation of Buildings Services	\$13,081.45	\$29,351.65		\$1,116,357.93

LEA : 108561803      Conemaugh Township Area SD

Printed 11/13/2024 8:25:18 AM

General Fund (10)

2660 Safety and Security Services	Elementary	Secondary	Federal	Total
100 <u>Personnel Services – Salaries</u>				
100 Personnel Services – Salaries				63,862.50
Total Personnel Services – Salaries				\$63,862.50
200 <u>Personnel Services – Employee Benefits</u>				
210 Group Insurance – Contracted Provider				57.46
220 Social Security Contributions				4,885.49
230 PSERS Retirement Contributions				21,713.17
260 Workers' Compensation				210.81
Total Personnel Services – Employee Benefits				\$26,866.93
300 <u>Purchased Professional and Technical Services</u>				
390 Other Purchased Professional and Technical Services				5,549.29
Total Purchased Professional and Technical Services				\$5,549.29
500 <u>Other Purchased Services</u>				
580 Travel				802.26
Total Other Purchased Services				\$802.26
600 <u>Supplies</u>				
610 General Supplies	4,013.92	620.00		4,633.92
Total Supplies	\$4,013.92	\$620.00		\$4,633.92
800 <u>Other Objects</u>				
810 Dues and Fees				645.00
Total Other Objects				\$645.00
Total 2660 Safety and Security Services	\$4,013.92	\$620.00		\$102,359.90

LEA : 108561803      Conemaugh Township Area SD

Printed 11/13/2024 8:25:18 AM

General Fund (10)

2700 Student Transportation Services	<u>Elementary</u>	<u>Secondary</u>	<u>Federal</u>	<u>Total</u>
300 <u>Purchased Professional and Technical Services</u>				
340 Technical Services				30,481.24
Total Purchased Professional and Technical Services				\$30,481.24
500 <u>Other Purchased Services</u>				
513 Contracted Carriers				879,360.34
Total Other Purchased Services				\$879,360.34
600 <u>Supplies</u>				
610 General Supplies				556.00
650 Supplies & Fees – Technology Related				11,053.58
Total Supplies				\$11,609.58
Total 2700 Student Transportation Services				\$921,451.16

LEA : 108561803     Conemaugh Township Area SD

Printed 11/13/2024 8:25:18 AM

General Fund (10)

2710 Supervision of Student Transportation Services	<u>Elementary</u>	<u>Secondary</u>	<u>Federal</u>	<u>Total</u>
600 <u>Supplies</u>				
610 General Supplies				556.00
Total Supplies				\$556.00
Total 2710 Supervision of Student Transportation Services				\$556.00

LEA : 108561803     Conemaugh Township Area SD

Printed 11/13/2024 8:25:18 AM

General Fund (10)

2711 Supervision of Student Transportation Services – Head of Component	<u>Elementary</u>	<u>Secondary</u>	<u>Federal</u>	<u>Total</u>
600 <u>Supplies</u>				
610 General Supplies				556.00
Total Supplies				\$556.00
Total 2711 Supervision of Student Transportation Services – Head of Component				\$556.00

LEA : 108561803     Conemaugh Township Area SD

Printed 11/13/2024 8:25:18 AM

General Fund (10)

2720 Vehicle Operation Services	<u>Elementary</u>	<u>Secondary</u>	<u>Federal</u>	<u>Total</u>
300 <u>Purchased Professional and Technical Services</u>				
340 Technical Services				30,481.24
Total Purchased Professional and Technical Services				\$30,481.24
500 <u>Other Purchased Services</u>				
513 Contracted Carriers				873,694.52
Total Other Purchased Services				\$873,694.52
600 <u>Supplies</u>				
650 Supplies & Fees – Technology Related				11,053.58
Total Supplies				\$11,053.58
Total 2720 Vehicle Operation Services				\$915,229.34

LEA : 108561803     Conemaugh Township Area SD

Printed 11/13/2024 8:25:18 AM

General Fund (10)

2750 Nonpublic Transportation	<u>Elementary</u>	<u>Secondary</u>	<u>Federal</u>	<u>Total</u>
500 <u>Other Purchased Services</u>				
513 Contracted Carriers				5,665.82
Total Other Purchased Services				\$5,665.82
Total 2750 Nonpublic Transportation				\$5,665.82

LEA : 108561803      Conemaugh Township Area SD

Printed 11/13/2024 8:25:18 AM

General Fund (10)

2800 Support Services – Central	<u>Elementary</u>	<u>Secondary</u>	<u>Federal</u>	<u>Total</u>
300 <u>Purchased Professional and Technical Services</u>				
329 Professional Educational Services – Other			100.00	8,633.70
390 Other Purchased Professional and Technical Services			925.00	925.00
<b>Total Purchased Professional and Technical Services</b>			<b>\$1,025.00</b>	<b>\$9,558.70</b>
500 <u>Other Purchased Services</u>				
580 Travel			342.72	342.72
<b>Total Other Purchased Services</b>			<b>\$342.72</b>	<b>\$342.72</b>
600 <u>Supplies</u>				
610 General Supplies				22,955.20
650 Supplies & Fees – Technology Related			19,792.15	114,013.77
<b>Total Supplies</b>			<b>\$19,792.15</b>	<b>\$136,968.97</b>
<b>Total 2800 Support Services – Central</b>			<b>\$21,159.87</b>	<b>\$146,870.39</b>

LEA : 108561803     Conemaugh Township Area SD

Printed 11/13/2024 8:25:18 AM

General Fund (10)

2810 Planning, Research, Development and Evaluation Services	<u>Elementary</u>	<u>Secondary</u>	<u>Federal</u>	<u>Total</u>
300 <u>Purchased Professional and Technical Services</u>				
329 Professional Educational Services – Other				8,533.70
Total Purchased Professional and Technical Services				\$8,533.70
600 <u>Supplies</u>				
610 General Supplies				22,955.20
650 Supplies & Fees – Technology Related			19,792.15	114,013.77
Total Supplies			\$19,792.15	\$136,968.97
Total 2810 Planning, Research, Development and Evaluation Services			\$19,792.15	\$145,502.67

LEA : 108561803     Conemaugh Township Area SD

Printed 11/13/2024 8:25:18 AM

General Fund (10)

2850 State and Federal Agency Liaison Services	<u>Elementary</u>	<u>Secondary</u>	<u>Federal</u>	<u>Total</u>
300 <u>Purchased Professional and Technical Services</u>				
329 Professional Educational Services – Other			100.00	100.00
390 Other Purchased Professional and Technical Services			925.00	925.00
Total Purchased Professional and Technical Services			\$1,025.00	\$1,025.00
500 <u>Other Purchased Services</u>				
580 Travel			342.72	342.72
Total Other Purchased Services			\$342.72	\$342.72
Total 2850 State and Federal Agency Liaison Services			\$1,367.72	\$1,367.72

LEA : 108561803      Conemaugh Township Area SD

Printed 11/13/2024 8:25:18 AM

General Fund (10)

2900 Other Support Services	<u>Elementary</u>	<u>Secondary</u>	<u>Federal</u>	<u>Total</u>
500 <u>Other Purchased Services</u>				
595 IU Payments By Withholding				2,743.12
Total Other Purchased Services				\$2,743.12
Total 2900 Other Support Services				\$2,743.12

LEA : 108561803     Conemaugh Township Area SD

Printed 11/13/2024 8:25:18 AM

General Fund (10)

2910 Support Services Not Listed Elsewhere In the 2000 Series

<u>Elementary</u>	<u>Secondary</u>	<u>Federal</u>	<u>Total</u>
-------------------	------------------	----------------	--------------

500 Other Purchased Services

595 IU Payments By Withholding			2,743.12
--------------------------------	--	--	----------

<b>Total Other Purchased Services</b>			<b>\$2,743.12</b>
---------------------------------------	--	--	-------------------

<b>Total 2910 Support Services Not Listed Elsewhere In the 2000 Series</b>			<b>\$2,743.12</b>
--	--	--	-------------------

LEA : 108561803     Conemaugh Township Area SD

Printed 11/13/2024 8:25:27 AM

General Fund (10)

3000 Operation of Non-Instructional Services		Total
100	<u>Personnel Services – Salaries</u>	
100	Personnel Services – Salaries	218,694.38
Total Personnel Services – Salaries		\$218,694.38
200	<u>Personnel Services – Employee Benefits</u>	
210	Group Insurance – Contracted Provider	3,858.19
220	Social Security Contributions	16,862.07
230	PSERS Retirement Contributions	46,571.98
260	Workers' Compensation	730.04
292	Health Savings Accounts	99.97
Total Personnel Services – Employee Benefits		\$68,122.25
300	<u>Purchased Professional and Technical Services</u>	
330	Other Professional Services	36,582.66
390	Other Purchased Professional and Technical Services	950.00
Total Purchased Professional and Technical Services		\$37,532.66
400	<u>Purchased Property Services</u>	
420	Utility Services	992.54
430	Repairs and Maintenance Services	19,260.83
Total Purchased Property Services		\$20,253.37
500	<u>Other Purchased Services</u>	
510	Student Transportation Services	76,678.34
530	Communications	639.97
580	Travel	8,025.12
Total Other Purchased Services		\$85,343.43
600	<u>Supplies</u>	
610	General Supplies	97,210.71
640	Books and Periodicals	730.00
Total Supplies		\$97,940.71
700	<u>Property</u>	
752	Capital Equipment – Original and Additional	23,123.24
Total Property		\$23,123.24
800	<u>Other Objects</u>	
810	Dues and Fees	35,254.41
860	Grants To Municipal and Community Service Organizations	1,400.00
Total Other Objects		\$36,654.41
Total 3000 Operation of Non-Instructional Services		\$587,664.45

LEA : 108561803      Conemaugh Township Area SD

Printed 11/13/2024 8:25:27 AM

General Fund (10)

3200 Student Activities

	<u>Elementary</u>	<u>Secondary</u>	<u>Federal</u>	<u>Total</u>
<b>100 <u>Personnel Services – Salaries</u></b>				
100 Personnel Services – Salaries				218,694.38
<b>Total Personnel Services – Salaries</b>				<b>\$218,694.38</b>
<b>200 <u>Personnel Services – Employee Benefits</u></b>				
210 Group Insurance – Contracted Provider				3,858.19
220 Social Security Contributions				16,862.07
230 PSERS Retirement Contributions				46,571.98
260 Workers' Compensation				730.04
292 Health Savings Accounts				99.97
<b>Total Personnel Services – Employee Benefits</b>				<b>\$68,122.25</b>
<b>300 <u>Purchased Professional and Technical Services</u></b>				
330 Other Professional Services				36,582.66
390 Other Purchased Professional and Technical Services				950.00
<b>Total Purchased Professional and Technical Services</b>				<b>\$37,532.66</b>
<b>400 <u>Purchased Property Services</u></b>				
420 Utility Services				992.54
430 Repairs and Maintenance Services				19,260.83
<b>Total Purchased Property Services</b>				<b>\$20,253.37</b>
<b>500 <u>Other Purchased Services</u></b>				
510 Student Transportation Services				76,678.34
530 Communications				639.97
580 Travel				8,025.12
<b>Total Other Purchased Services</b>				<b>\$85,343.43</b>
<b>600 <u>Supplies</u></b>				
610 General Supplies				97,210.71
640 Books and Periodicals				730.00
<b>Total Supplies</b>				<b>\$97,940.71</b>
<b>700 <u>Property</u></b>				
752 Capital Equipment – Original and Additional				23,123.24
<b>Total Property</b>				<b>\$23,123.24</b>
<b>800 <u>Other Objects</u></b>				
810 Dues and Fees				35,254.41
<b>Total Other Objects</b>				<b>\$35,254.41</b>
<b>Total 3200 Student Activities</b>				<b>\$586,264.45</b>

LEA : 108561803     Conemaugh Township Area SD

Printed 11/13/2024 8:25:27 AM

General Fund (10)

3300 Community Services

<u>Elementary</u>	<u>Secondary</u>	<u>Federal</u>	<u>Total</u>
-------------------	------------------	----------------	--------------

800 Other Objects

860 Grants To Municipal and Community Service Organizations			1,400.00
---	--	--	----------

Total Other Objects				\$1,400.00
Total 3300 Community Services				\$1,400.00

LEA : 108561803      Conemaugh Township Area SD

Printed 11/13/2024 8:25:29 AM

General Fund (10)

4000 Facilities Acquisition, Construction and Improvement Services	<u>Total</u>
300 <u>Purchased Professional and Technical Services</u>	
330 Other Professional Services	110,700.31
Total Purchased Professional and Technical Services	\$110,700.31
Total 4000 Facilities Acquisition, Construction and Improvement Services	\$110,700.31

LEA : 108561803     Conemaugh Township Area SD

Printed 11/13/2024 8:25:29 AM

General Fund (10)

4600 Existing Building Improvement Services	<u>Elementary</u>	<u>Secondary</u>	<u>Federal</u>	<u>Total</u>
300 <u>Purchased Professional and Technical Services</u>				
330 Other Professional Services			73,604.40	110,700.31
Total Purchased Professional and Technical Services			\$73,604.40	\$110,700.31
Total 4600 Existing Building Improvement Services			\$73,604.40	\$110,700.31

LEA : 108561803      Conemaugh Township Area SD

Printed 11/13/2024 8:25:36 AM

General Fund (10)

5000 Other Expenditures and Financing Uses

Total

800 Other Objects

830 Interest	248,758.53
--------------	------------

Total Other Objects	\$248,758.53
---------------------	--------------

900 Other Uses of Funds

910 Redemption of Principal	506,444.19
-----------------------------	------------

932 Capital Reserve Fund Transfers Applicable To Fund 32	57,000.00
--	-----------

Total Other Uses of Funds	\$563,444.19
---------------------------	--------------

Total 5000 Other Expenditures and Financing Uses	\$812,202.72
--	--------------

LEA : 108561803     Conemaugh Township Area SD

Printed 11/13/2024 8:25:36 AM

General Fund (10)

5100 Debt Service / Other Expenditures and Financing Uses	<u>Elementary</u>	<u>Secondary</u>	<u>Federal</u>	<u>Total</u>
800 <u>Other Objects</u>				
830 Interest				248,758.53
Total Other Objects				\$248,758.53
900 <u>Other Uses of Funds</u>				
910 Redemption of Principal				506,444.19
Total Other Uses of Funds				\$506,444.19
Total 5100 Debt Service / Other Expenditures and Financing Uses				\$755,202.72

LEA : 108561803     Conemaugh Township Area SD

Printed 11/13/2024 8:25:36 AM

General Fund (10)

5110 Debt Service	<u>Elementary</u>	<u>Secondary</u>	<u>Federal</u>	<u>Total</u>
800 <u>Other Objects</u>				
830 Interest				246,961.90
Total Other Objects				\$246,961.90
900 <u>Other Uses of Funds</u>				
910 Redemption of Principal				490,000.00
Total Other Uses of Funds				\$490,000.00
Total 5110 Debt Service				\$736,961.90

LEA : 108561803     Conemaugh Township Area SD

Printed 11/13/2024 8:25:36 AM

General Fund (10)

5140 Leases and Other Right-to-Use Arrangements	<u>Elementary</u>	<u>Secondary</u>	<u>Federal</u>	<u>Total</u>
800 <u>Other Objects</u>				
830 Interest				1,796.63
Total Other Objects				\$1,796.63
900 <u>Other Uses of Funds</u>				
910 Redemption of Principal				16,444.19
Total Other Uses of Funds				\$16,444.19
Total 5140 Leases and Other Right-to-Use Arrangements				\$18,240.82

LEA : 108561803     Conemaugh Township Area SD

Printed 11/13/2024 8:25:36 AM

General Fund (10)

5200 Interfund Transfers – Out	<u>Elementary</u>	<u>Secondary</u>	<u>Federal</u>	<u>Total</u>
900 <u>Other Uses of Funds</u>				
932 Capital Reserve Fund Transfers Applicable To Fund 32				57,000.00
Total Other Uses of Funds				\$57,000.00
Total 5200 Interfund Transfers – Out				\$57,000.00

LEA : 108561803     Conemaugh Township Area SD

Printed 11/13/2024 8:25:36 AM

General Fund (10)

5230 Capital Projects Fund Transfers	<u>Elementary</u>	<u>Secondary</u>	<u>Federal</u>	<u>Total</u>
900 <u>Other Uses of Funds</u>				
932 Capital Reserve Fund Transfers Applicable To Fund 32				57,000.00
Total Other Uses of Funds				\$57,000.00
Total 5230 Capital Projects Fund Transfers				\$57,000.00

LEA : 108561803      Conemaugh Township Area SD

Printed 11/13/2024 8:25:23 AM

Capital Reserve Fund - § 1431 (32)

2000 Support Services

Total

700 Property

762 Capitalized Equipment - Replacement

63,800.00

Total Property	\$63,800.00
Total 2000 Support Services	\$63,800.00

LEA : 108561803     Conemaugh Township Area SD

Printed 11/13/2024 8:25:23 AM

Capital Reserve Fund - § 1431 (32)

2700 Student Transportation Services	<u>Elementary</u>	<u>Secondary</u>	<u>Federal</u>	<u>Total</u>
700 <u>Property</u>				
762 Capitalized Equipment - Replacement				63,800.00
Total Property				\$63,800.00
Total 2700 Student Transportation Services				\$63,800.00

LEA : 108561803     Conemaugh Township Area SD

Printed 11/13/2024 8:25:23 AM

Capital Reserve Fund - § 1431 (32)

2720 Vehicle Operation Services

<u>Elementary</u>	<u>Secondary</u>	<u>Federal</u>	<u>Total</u>
-------------------	------------------	----------------	--------------

700 Property

762 Capitalized Equipment - Replacement			63,800.00
---	--	--	-----------

Total Property				\$63,800.00
Total 2720 Vehicle Operation Services				\$63,800.00

LEA : 108561803      Conemaugh Township Area SD

Printed 11/13/2024 8:25:31 AM

Capital Reserve Fund - § 1431 (32)

4000 Facilities Acquisition, Construction and Improvement Services		<u>Total</u>
300 <u>Purchased Professional and Technical Services</u>		
330 Other Professional Services		393,070.28
Total Purchased Professional and Technical Services		\$393,070.28
400 <u>Purchased Property Services</u>		
430 Repairs and Maintenance Services		48,350.69
Total Purchased Property Services		\$48,350.69
Total 4000 Facilities Acquisition, Construction and Improvement Services		\$441,420.97

LEA : 108561803     Conemaugh Township Area SD

Printed 11/13/2024 8:25:31 AM

Capital Reserve Fund - § 1431 (32)

4600 Existing Building Improvement Services	<u>Elementary</u>	<u>Secondary</u>	<u>Federal</u>	<u>Total</u>
300 <u>Purchased Professional and Technical Services</u>				
330 Other Professional Services				393,070.28
Total Purchased Professional and Technical Services				\$393,070.28
400 <u>Purchased Property Services</u>				
430 Repairs and Maintenance Services				48,350.69
Total Purchased Property Services				\$48,350.69
Total 4600 Existing Building Improvement Services				\$441,420.97

LEA : 108561803     Conemaugh Township Area SD

Printed 11/13/2024 8:25:25 AM

Other Capital Projects Fund (39)

2000 Support Services

Total

800 Other Objects

810 Dues and Fees

222,694.14

Total Other Objects	\$222,694.14
Total 2000 Support Services	\$222,694.14

Other Capital Projects Fund (39)				
2300 Support Services – Administration	<u>Elementary</u>	<u>Secondary</u>	<u>Federal</u>	<u>Total</u>
800 <u>Other Objects</u>				
810 Dues and Fees				222,694.14
<b>Total Other Objects</b>				<b>\$222,694.14</b>
<b>Total 2300 Support Services – Administration</b>				<b>\$222,694.14</b>

LEA : 108561803     Conemaugh Township Area SD

Printed 11/13/2024 8:25:25 AM

Other Capital Projects Fund (39)

2390 Other Administration Services

<u>Elementary</u>	<u>Secondary</u>	<u>Federal</u>	<u>Total</u>
-------------------	------------------	----------------	--------------

800 Other Objects

810 Dues and Fees			222,694.14
-------------------	--	--	------------

<b>Total Other Objects</b>			<b>\$222,694.14</b>
----------------------------	--	--	---------------------

<b>Total 2390 Other Administration Services</b>			<b>\$222,694.14</b>
---	--	--	---------------------

LEA : 108561803      Conemaugh Township Area SD

Printed 11/13/2024 8:25:33 AM

Other Capital Projects Fund (39)

4000 Facilities Acquisition, Construction and Improvement Services

Total

400 Purchased Property Services

430 Repairs and Maintenance Services

366,250.00

Total Purchased Property Services	\$366,250.00
Total 4000 Facilities Acquisition, Construction and Improvement Services	\$366,250.00

LEA : 108561803     Conemaugh Township Area SD

Printed 11/13/2024 8:25:33 AM

Other Capital Projects Fund (39)

4600 Existing Building Improvement Services

<u>Elementary</u>	<u>Secondary</u>	<u>Federal</u>	<u>Total</u>
-------------------	------------------	----------------	--------------

400 Purchased Property Services

430 Repairs and Maintenance Services			366,250.00
--------------------------------------	--	--	------------

Total Purchased Property Services			\$366,250.00
-----------------------------------	--	--	--------------

Total 4600 Existing Building Improvement Services			\$366,250.00
---	--	--	--------------

LEA : 108561803      Conemaugh Township Area SD

Printed 11/13/2024 8:25:38 AM

Other Capital Projects Fund (39)

5000 Other Expenditures and Financing Uses

Total

900 Other Uses of Funds

990 Miscellaneous Other Uses of Funds

317,634.60

Total Other Uses of Funds

\$317,634.60

Total 5000 Other Expenditures and Financing Uses

\$317,634.60

LEA : 108561803     Conemaugh Township Area SD

Printed 11/13/2024 8:25:38 AM

Other Capital Projects Fund (39)

5100 Debt Service / Other Expenditures and Financing Uses	<u>Elementary</u>	<u>Secondary</u>	<u>Federal</u>	<u>Total</u>
900 <u>Other Uses of Funds</u>				
990 Miscellaneous Other Uses of Funds				317,634.60
Total Other Uses of Funds				\$317,634.60
Total 5100 Debt Service / Other Expenditures and Financing Uses				\$317,634.60

LEA : 108561803     Conemaugh Township Area SD

Printed 11/13/2024 8:25:38 AM

Other Capital Projects Fund (39)

5150 Bond Discounts

<u>Elementary</u>	<u>Secondary</u>	<u>Federal</u>	<u>Total</u>
-------------------	------------------	----------------	--------------

900 Other Uses of Funds

990 Miscellaneous Other Uses of Funds				317,634.60
---------------------------------------	--	--	--	------------

Total Other Uses of Funds				\$317,634.60
Total 5150 Bond Discounts				\$317,634.60

LEA : 108561803     Conemaugh Township Area SD

Printed 11/13/2024 8:25:41 AM

	<u>General Fund(10)</u>	<u>Student Sponsored Activity Fund(21)</u>	<u>Public Purpose Trust(27)</u>	<u>Other Compt Approved (28)</u>	<u>Athletic / Activity(29)</u>
<b>1000 <u>Instruction</u></b>					
1100 Regular Programs - Elementary / Secondary	6,440,735.85				
1200 Special Programs - Elementary / Secondary	1,861,198.02				
1300 Vocational Education	829,620.43				
1400 Other Instructional Programs - Elementary / Secondary	87,214.35				
1500 Nonpublic School Programs	8,161.25				
<b>Total Instruction</b>	<b>\$9,226,929.90</b>				
<b>2000 <u>Support Services</u></b>					
2100 Support Services - Students	668,185.86				
2200 Support Services - Instructional Staff	419,339.11				
2300 Support Services - Administration	1,188,179.59				
2400 Support Services - Pupil Health	353,463.45				
2500 Support Services - Business	502,467.99				
2600 Operation and Maintenance of Plant Services	1,355,601.12				
2700 Student Transportation Services	921,451.16				
2800 Support Services - Central	146,870.39				
2900 Other Support Services	2,743.12				
<b>Total Support Services</b>	<b>\$5,558,301.79</b>				
<b>3000 <u>Operation of Non-Instructional Services</u></b>					
3200 Student Activities	586,264.45				
3300 Community Services	1,400.00				
<b>Total Operation of Non-Instructional Services</b>	<b>\$587,664.45</b>				
<b>4000 <u>Facilities Acquisition, Construction and Improvement Services</u></b>					
4600 Existing Building Improvement Services	110,700.31				
<b>Total Facilities Acquisition, Construction and Improvement Services</b>	<b>\$110,700.31</b>				
<b>5000 <u>Other Expenditures and Financing Uses</u></b>					
5100 Debt Service / Other Expenditures and Financing Uses	755,202.72				
5200 Interfund Transfers - Out	57,000.00				
<b>Total Other Expenditures and Financing Uses</b>	<b>\$812,202.72</b>				
<b>TOTAL ACTUAL EXPENDITURES &amp; OTHER FINANCING USES</b>	<b>\$16,295,799.17</b>				

LEA : 108561803     Conemaugh Township Area SD

Printed 11/13/2024 8:25:41 AM

	<u>Capital Reserve (690.1850)(31)</u>	<u>Capital Reserve (1431)(32)</u>	<u>Other Capital Projects Fund(39)</u>	<u>Debt Service(40)</u>	<u>Permanent(90)</u>
<b>1000 <u>Instruction</u></b>					
1100 Regular Programs - Elementary / Secondary					
1200 Special Programs - Elementary / Secondary					
1300 Vocational Education					
1400 Other Instructional Programs - Elementary / Secondary					
1500 Nonpublic School Programs					
<b>Total Instruction</b>					
<b>2000 <u>Support Services</u></b>					
2100 Support Services - Students					
2200 Support Services - Instructional Staff					
2300 Support Services - Administration			222,694.14		
2400 Support Services - Pupil Health					
2500 Support Services - Business					
2600 Operation and Maintenance of Plant Services					
2700 Student Transportation Services		63,800.00			
2800 Support Services - Central					
2900 Other Support Services					
<b>Total Support Services</b>		<b>\$63,800.00</b>	<b>\$222,694.14</b>		
<b>3000 <u>Operation of Non-Instructional Services</u></b>					
3200 Student Activities					
3300 Community Services					
<b>Total Operation of Non-Instructional Services</b>					
<b>4000 <u>Facilities Acquisition, Construction and Improvement Services</u></b>					
4600 Existing Building Improvement Services		441,420.97	366,250.00		
<b>Total Facilities Acquisition, Construction and Improvement Services</b>		<b>\$441,420.97</b>	<b>\$366,250.00</b>		
<b>5000 <u>Other Expenditures and Financing Uses</u></b>					
5100 Debt Service / Other Expenditures and Financing Uses			317,634.60		
5200 Interfund Transfers - Out					
<b>Total Other Expenditures and Financing Uses</b>			<b>\$317,634.60</b>		
<b>TOTAL ACTUAL EXPENDITURES &amp; OTHER FINANCING USES</b>		<b>\$505,220.97</b>	<b>\$906,578.74</b>		

LEA : 108561803     Conemaugh Township Area SD

Printed 11/13/2024 8:25:41 AM

	<u>Total</u>
<b>1000 <u>Instruction</u></b>	
1100 Regular Programs - Elementary / Secondary	6,440,735.85
1200 Special Programs - Elementary / Secondary	1,861,198.02
1300 Vocational Education	829,620.43
1400 Other Instructional Programs - Elementary / Secondary	87,214.35
1500 Nonpublic School Programs	8,161.25
<b>Total Instruction</b>	<b>\$9,226,929.90</b>
<b>2000 <u>Support Services</u></b>	
2100 Support Services - Students	668,185.86
2200 Support Services - Instructional Staff	419,339.11
2300 Support Services - Administration	1,410,873.73
2400 Support Services - Pupil Health	353,463.45
2500 Support Services - Business	502,467.99
2600 Operation and Maintenance of Plant Services	1,355,601.12
2700 Student Transportation Services	985,251.16
2800 Support Services - Central	146,870.39
2900 Other Support Services	2,743.12
<b>Total Support Services</b>	<b>\$5,844,795.93</b>
<b>3000 <u>Operation of Non-Instructional Services</u></b>	
3200 Student Activities	586,264.45
3300 Community Services	1,400.00
<b>Total Operation of Non-Instructional Services</b>	<b>\$587,664.45</b>
<b>4000 <u>Facilities Acquisition, Construction and Improvement Services</u></b>	
4600 Existing Building Improvement Services	918,371.28
<b>Total Facilities Acquisition, Construction and Improvement Services</b>	<b>\$918,371.28</b>
<b>5000 <u>Other Expenditures and Financing Uses</u></b>	
5100 Debt Service / Other Expenditures and Financing Uses	1,072,837.32
5200 Interfund Transfers - Out	57,000.00
<b>Total Other Expenditures and Financing Uses</b>	<b>\$1,129,837.32</b>
<b>TOTAL ACTUAL EXPENDITURES &amp; OTHER FINANCING USES</b>	<b>\$17,707,598.88</b>

LEA : 108561803      Conemaugh Township Area SD

Printed 11/13/2024 8:25:50 AM

PSERS Salary Data (Salary Data should relate to the General Fund only)

Amount	Description	Amount
	Total Salary Base for salaries subject to PSERS withholding	6,369,543.44
	Total Federally Funded salaries subject to PSERS withholding	267,732.16

Title I Expenditure Data

Amount	Description	Amount
	Expenditures Funded with Current Title I Funds	174,604.00
Total	Title I Expenditure Data	\$174,604.00

Title IV Revenue Data

Amount	Description	Amount
	Revenue from Title IV-A-1: Student Support and Academic Enrichment Grants	11,335.00

1 .	<b><u>Current Special Education Expenditures within Function 1000</u></b> See list of exclusions in the note below.	1,388,198.92
2 .	<b><u>Current Special Education Expenditures within Function 2000</u></b> See list of exclusions in the note below.	367,169.18
2A.	<b><u>Current Special Education Expenditures within Sub-Function 2100</u></b> This data should also be included in line 2 above. See list of exclusions in the note below.	140,319.03
2B.	<b><u>Current Special Education Expenditures within Sub-Function 2200</u></b> This data should also be included in line 2 above. See list of exclusions in the note below.	34,651.99
2C.	<b><u>Current Special Education Expenditures within Sub-Function 2700</u></b> This data should also be included in line 2 above. See list of exclusions in the note below.	192,198.16
3.	<b><u>Current Special Education Expenditures within Sub-Function 3100</u></b> See list of exclusions in the note below.	
4.	<b><u>Current Special Education Expenditures within Sub-Function 3200</u></b> See list of exclusions in the note below.	

**Note:** The Current Special Education Expenditure amounts for each line should be calculated as follows:

- \* Include the total expenditures for special education costs from all governmental funds and the food service fund 51 for the function/sub-function requested
- \* Exclude data from sub-functions: 1243,1450,1500,1600,1807,2280,2450,2750,2990
- \* Exclude data from objects: 322,511,512,516,561,562,564,566,592,593,594,595,596,597,700,830,899

Benefits for Staff Relative to Collective Bargaining Agreements

	OBJECT	COVERED	NOT COVERED	TOTAL
10 General Fund	No Self Insurance data to report			
	211 Medical Insurance	924,289.44	297,560.05	1,221,849.49
	212 Dental Insurance	66,410.05	13,111.15	79,521.20
	215 Eye Care Insurance	11,751.84	2,994.43	14,746.27
	216 Prescription Insurance			
	271 Self-Insurance Medical Benefits			
	272 Self-Insurance Dental Benefits			
	275 Self-Insurance Eye Care Benefits			
	276 Self-Insurance Prescription Benefits			
	FUND TOTAL	\$1,002,451.33	\$313,665.63	\$1,316,116.96
50 Enterprise Fund	No Self Insurance data to report			
	211 Medical Insurance		77,132.82	77,132.82
	212 Dental Insurance		3,454.92	3,454.92
	215 Eye Care Insurance		757.65	757.65
	216 Prescription Insurance			
	271 Self-Insurance Medical Benefits			
	272 Self-Insurance Dental Benefits			
	275 Self-Insurance Eye Care Benefits			
	276 Self-Insurance Prescription Benefits			
	FUND TOTAL		\$81,345.39	\$81,345.39
60 Internal Service Fund	No Self Insurance data to report			
	211 Medical Insurance			
	212 Dental Insurance			
	215 Eye Care Insurance			
	216 Prescription Insurance			
	271 Self-Insurance Medical Benefits			
	272 Self-Insurance Dental Benefits			
	275 Self-Insurance Eye Care Benefits			
	276 Self-Insurance Prescription Benefits			
	FUND TOTAL			
Total of All Funds		\$1,002,451.33	\$395,011.02	\$1,397,462.35

LEA : 108561803     Conemaugh Township Area SD

Printed 11/13/2024 8:25:56 AM

Function	Special Education (Prior Year)	Nonspecial Education (Prior Year)	Total (Prior Year)	Special Education (Current Year)	Nonspecial Education (Current Year)	Total (Current Year)
2120 Guidance Services	67,385.41	292,195.20	359,580.61	82,522.57	310,442.07	392,964.64
2140 Psychological Services	29,634.80	128,501.82	158,136.62	32,176.46	121,044.76	153,221.22
2150 Speech Pathology and Audiology Services						
2160 Social Work Services	21,341.86	92,542.12	113,883.98	25,620.00	96,380.00	122,000.00
2260 Instruction and Curriculum Development Services	29,163.89	126,459.86	155,623.75	34,651.99	130,357.49	165,009.48
2350 Legal and Accounting Services	1,516.25	6,574.75	8,091.00	6,398.88	24,071.97	30,470.85
2420 Medical Services	445.23	1,930.61	2,375.84	596.89	2,245.44	2,842.33
2440 Nursing Services	41,105.47	178,240.71	219,346.18	46,783.88	175,996.52	222,780.40
2700 Student Transportation Services	146,309.87	666,439.79	812,749.66	193,504.74	727,946.42	921,451.16
Total	\$336,902.78	\$1,492,884.86	\$1,829,787.64	\$422,255.41	\$1,588,484.67	\$2,010,740.08

LEA : 108561803     Conemaugh Township Area SD

(PRINCIPAL AMOUNTS ONLY)								
<u>GOVERNMENTAL FUNDS/ ACTIVITIES</u>	Short-Term Borrowing	General Obligation Bonds/Notes	Authority Building Obligations	Leases, Other Right to Use Arrangements	Extended Term Financing Agreements	Other Long Term Debt/Liabilities	OPEB, Comp Abs, Net Pension Liab	Total
1. Debt at Beginning of Fiscal Year		9,010,000.00		45,607.65			21,669,904.00	30,725,511.65
2. Additional Debt Incurred During Year		11,215,000.00		10,407.49				11,225,407.49
3. Retirements and Repayments		490,000.00		16,444.19			826,284.00	1,332,728.19
4. Debt at End of Fiscal Year		19,735,000.00		39,570.95			20,843,620.00	40,618,190.95
5. Accreted Interest at End Of Fiscal Year								
6. Total Debt and Accreted Interest		19,735,000.00		39,570.95			20,843,620.00	40,618,190.95
7. Current Portion P&I - Due within 1 year		1,213,235.47		17,088.54			20,620.00	1,250,944.01
8. Interest Paid during current fiscal year		246,961.90		1,796.63				248,758.53

(PRINCIPAL AMOUNTS ONLY)								
<u>PROPRIETARY FUNDS</u>	Short-Term Borrowing	General Obligation Bonds/Notes	Authority Building Obligations	Leases, Other Right to Use Arrangements	Extended Term Financing Agreements	Other Long Term Debt/Liabilities	OPEB, Comp Abs, Net Pension Liab	Total
1. Debt at Beginning of Fiscal Year							37,718.00	37,718.00
2. Additional Debt Incurred During Year								
3. Retirements and Repayments							18,544.00	18,544.00
4. Debt at End of Fiscal Year							19,174.00	19,174.00
5. Accreted Interest at End Of Fiscal Year								
6. Total Debt and Accreted Interest							19,174.00	19,174.00
7. Current Portion P&I - Due within 1 year							165.00	165.00
8. Interest Paid during current fiscal year								

LEA : 108561803     Conemaugh Township Area SD

Total Principal and Interest Payments Made by Your School - All Funds

Function	Fund		Principal (910)	Principal (920)	Interest (830)	Total (Principal +Interest)	Misc Other Uses (990)
5110	10	General Fund	490,000.00		246,961.90	736,961.90	
5110	20	Special Revenue Funds					
5110	30	Capital Projects Funds					
5110	40	Debt Service Fund					
5110	90	Permanent Fund					
5120	10	General Fund					
5120	20	Special Revenue Funds					
5120	30	Capital Projects Funds					
5120	40	Debt Service Fund					
5140	10	General Fund	16,444.19		1,796.63	18,240.82	
5140	20	Special Revenue Funds					
5140	30	Capital Projects Funds					
5140	40	Debt Service Fund					
5140	90	Permanent Fund					
Total Debt Payments - Governmental Funds			\$506,444.19		\$248,758.53	\$755,202.72	

Function	Fund		Principal (910)	Principal (920)	Interest (830)	Total (Principal +Interest)
5110	50	Enterprise Fund				
5110	60	Internal Service Fund				
5120	50	Enterprise Fund				
5120	60	Internal Service Fund				
5140	50	Enterprise Fund				
5140	60	Internal Service Fund				
Total Debt Payments - Proprietary Funds						

LEA : 108561803     Conemaugh Township Area SD

**Debt Details**  
**Governmental Funds/ Activities**

Debt Category	Debt Issue Date (MM/YYYY)	Principal Amounts Only				Current Portion Due Within One Year (Principal and Interest)	Interest Paid During Fiscal Year	
		Debt at Beginning of Fiscal Year	Additions	Reductions / Repayments	Debt at End of Fiscal Year			
General Obligation Bonds/Notes – CIB	05/2024		11,215,000.00		11,215,000.00	467,470.47		
General Obligation Bonds/Notes – CIB	06/2019	9,005,000.00		485,000.00	8,520,000.00	745,765.00		246,902.52
General Obligation Bonds/Notes – CIB	05/2014	5,000.00		5,000.00				59.38
Leases and Other Right to Use Arrangements		45,607.65	10,407.49	16,444.19	39,570.95	17,088.54		1,796.63
Compensated Absences		261,904.00		3,284.00	258,620.00	20,620.00		
Other Post-Employment Benefits (OPEB)		2,469,000.00		123,000.00	2,346,000.00			
Net Pension Liability		18,939,000.00		700,000.00	18,239,000.00			
Totals for Debt Entered:		\$30,725,511.65	\$11,225,407.49	\$1,332,728.19	\$40,618,190.95	\$1,250,944.01		\$248,758.53

**Bond Details**  
**Proprietary Funds**

Debt Category	Debt Issue Date (MM/YYYY)	Principal Amounts Only				Current Portion Due Within One Year (Principal and Interest)	Interest Paid During Fiscal Year	
		Debt at Beginning of Fiscal Year	Additions	Reductions / Repayments	Debt at End of Fiscal Year			
Compensated Absences		37,718.00		18,544.00	19,174.00	165.00		
Totals for Debt Entered:		\$37,718.00		\$18,544.00	\$19,174.00	\$165.00		

LEA : 108561803     Conemaugh Township Area SD

**General Fund (10)**

Section 1: Tuition/Purchased Services as Reported within Expenditure Detail	Amount
Tuition Reported in General Fund Expenditures 1000-560	1,454,327.91
Purchased Services in General Fund Expenditures 1000-594 and 1000-597	
Section 1 Total	\$1,454,327.91

Section 2: Tuition Paid to Institution Types During Fiscal Year	Tuition Paid For Nonspecial Education	Tuition Paid For Special Education	Total
1 1306 Institutions			
2 Institutionalized Children's Programs			
3 Juveniles Incarcerated in Adult Facilities			
4 Residential Treatment Facilities			
5 Other Local Education Agencies	10,489.93	29,025.00	39,514.93
6 Brick and Mortar Charter Schools			
7 Cyber Charter Schools	349,209.42	214,755.65	563,965.07
8 Career and Technology Centers	828,580.18		828,580.18
9 Approved Private Schools		22,267.73	22,267.73
10 PA Chartered Schools for the Deaf and Blind			
11 Private Residential Rehabilitative Institutions			
12 Juvenile Detention Centers			
13 Special Program Jointures			
14 Other Tuition Not Included Elsewhere In This Section			
Section 2 Total	\$1,188,279.53	\$266,048.38	\$1,454,327.91

LEA : 108561803      Conemaugh Township Area SD

Printed 11/13/2024 8:26:03 AM

Food Service / Cafeteria Operations Fund (51)

3000 Operation of Non-Instructional Services		<u>Total</u>
100 <u>Personnel Services – Salaries</u>		
100 Personnel Services – Salaries	206,481.00	
Total Personnel Services – Salaries		\$206,481.00
200 <u>Personnel Services – Employee Benefits</u>		
210 Group Insurance – Contracted Provider	76,007.00	
220 Social Security Contributions	18,327.00	
230 PSERS Retirement Contributions	78,602.00	
260 Workers' Compensation	734.00	
292 Health Savings Accounts	6,000.00	
Total Personnel Services – Employee Benefits		\$179,670.00
400 <u>Purchased Property Services</u>		
430 Repairs and Maintenance Services	2,053.00	
Total Purchased Property Services		\$2,053.00
600 <u>Supplies</u>		
610 General Supplies	451,470.00	
Total Supplies		\$451,470.00
700 <u>Property</u>		
740 Depreciation	53,247.00	
Total Property		\$53,247.00
800 <u>Other Objects</u>		
810 Dues and Fees	500.00	
Total Other Objects		\$500.00
Total 3000 Operation of Non-Instructional Services		\$893,421.00

LEA : 108561803      Conemaugh Township Area SD

Printed 11/13/2024 8:26:03 AM

Food Service / Cafeteria Operations Fund (51)

3100 Food Services	<u>Elementary</u>	<u>Secondary</u>	<u>Federal</u>	<u>Total</u>
100 <u>Personnel Services – Salaries</u>				
100 Personnel Services – Salaries				206,481.00
Total Personnel Services – Salaries				\$206,481.00
200 <u>Personnel Services – Employee Benefits</u>				
210 Group Insurance – Contracted Provider				76,007.00
220 Social Security Contributions				18,327.00
230 PSERS Retirement Contributions				78,602.00
260 Workers' Compensation				734.00
292 Health Savings Accounts				6,000.00
Total Personnel Services – Employee Benefits				\$179,670.00
400 <u>Purchased Property Services</u>				
430 Repairs and Maintenance Services				2,053.00
Total Purchased Property Services				\$2,053.00
600 <u>Supplies</u>				
610 General Supplies				451,470.00
Total Supplies				\$451,470.00
700 <u>Property</u>				
740 Depreciation				53,247.00
Total Property				\$53,247.00
800 <u>Other Objects</u>				
810 Dues and Fees				500.00
Total Other Objects				\$500.00
Total 3100 Food Services				\$893,421.00

	<u>Food Service(51)</u>	<u>Child Care Operations(52)</u>	<u>Other Enterprise(58)</u>	<u>Internal Service(60)</u>	<u>Total</u>
<b>3000 <u>Operation of Non-Instructional Services</u></b>					
3100 Food Services	893,421.00				893,421.00
<b>Total Operation of Non-Instructional Services</b>	<b>\$893,421.00</b>				<b>\$893,421.00</b>
<b>TOTAL ACTUAL EXPENDITURES &amp; OTHER FINANCING USES</b>	<b>\$893,421.00</b>				<b>\$893,421.00</b>

LEA : 108561803 Conemaugh Township Area SD

Printed 11/13/2024 8:26:11 AM

Fund	School	School Number	Local Personnel	Local Nonpersonnel	State Personnel	State Nonpersonnel	Federal Personnel	Federal Nonpersonnel	Total	Explanation
10										
	Conemaugh Twp Area El Sch	3977	1,350,264.10	253,872.70	3,099,956.83	582,844.80	309,728.05	32,343.23	5,629,009.71	
	Conemaugh Twp Area MS/SHS	3978	1,748,432.72	918,305.82	4,014,078.41	2,108,259.29	176,800.78	3,573.75	8,969,450.77	
Total			3,098,696.82	1,172,178.52	7,114,035.24	2,691,104.09	486,528.83	35,916.98	14,598,460.48	

	<u>Nonspecial Education</u>	<u>Special Education</u>
<b>1000 Instruction</b>		
1400 Other Instructional Programs - Elementary / Secondary		10,490.00
<b>Total Instruction</b>		<b>\$10,490.00</b>
<b>TOTAL ACTUAL EXPENDITURES &amp; OTHER FINANCING USES</b>		<b>\$10,490.00</b>

LEA : 108561803      Conemaugh Township Area SD

Printed 11/13/2024 8:26:19 AM

1000 Instruction

500 Other Purchased Services

561 Tuition To Other School Districts Within the State

10,490.00

**Total Other Purchased Services** **\$10,490.00**

**Total 1000 Instruction** **\$10,490.00**

LEA : 108561803     Conemaugh Township Area SD

Printed 11/13/2024 8:26:19 AM

1400 Other Instructional Programs - Elementary / Secondary	<u>Nonspecial Education</u>	<u>Special Education</u>
500 <u>Other Purchased Services</u>		
561 Tuition To Other School Districts Within the State		10,490.00
Total Other Purchased Services		\$10,490.00
Total 1400 Other Instructional Programs - Elementary / Secondary		\$10,490.00

LEA : 108561803      Conemaugh Township Area SD

Printed 11/13/2024 8:26:19 AM

1440 Alternative Regular Education Programs	<u>Nonspecial Education</u>	<u>Special Education</u>
500 <u>Other Purchased Services</u>		
561 Tuition To Other School Districts Within the State		10,490.00
Total Other Purchased Services		\$10,490.00
Total 1440 Alternative Regular Education Programs		\$10,490.00

LEA : 108561803      Conemaugh Township Area SD

Printed 11/13/2024 8:26:19 AM

1441 Adjudicated / Court-Placed Programs	<u>Nonspecial Education</u>	<u>Special Education</u>
500 <u>Other Purchased Services</u>		
561 Tuition To Other School Districts Within the State		10,490.00
Total Other Purchased Services		\$10,490.00
Total 1441 Adjudicated / Court-Placed Programs		\$10,490.00